

# RIVA



MODERN  
LIVING  
BY THE SEA

A project by

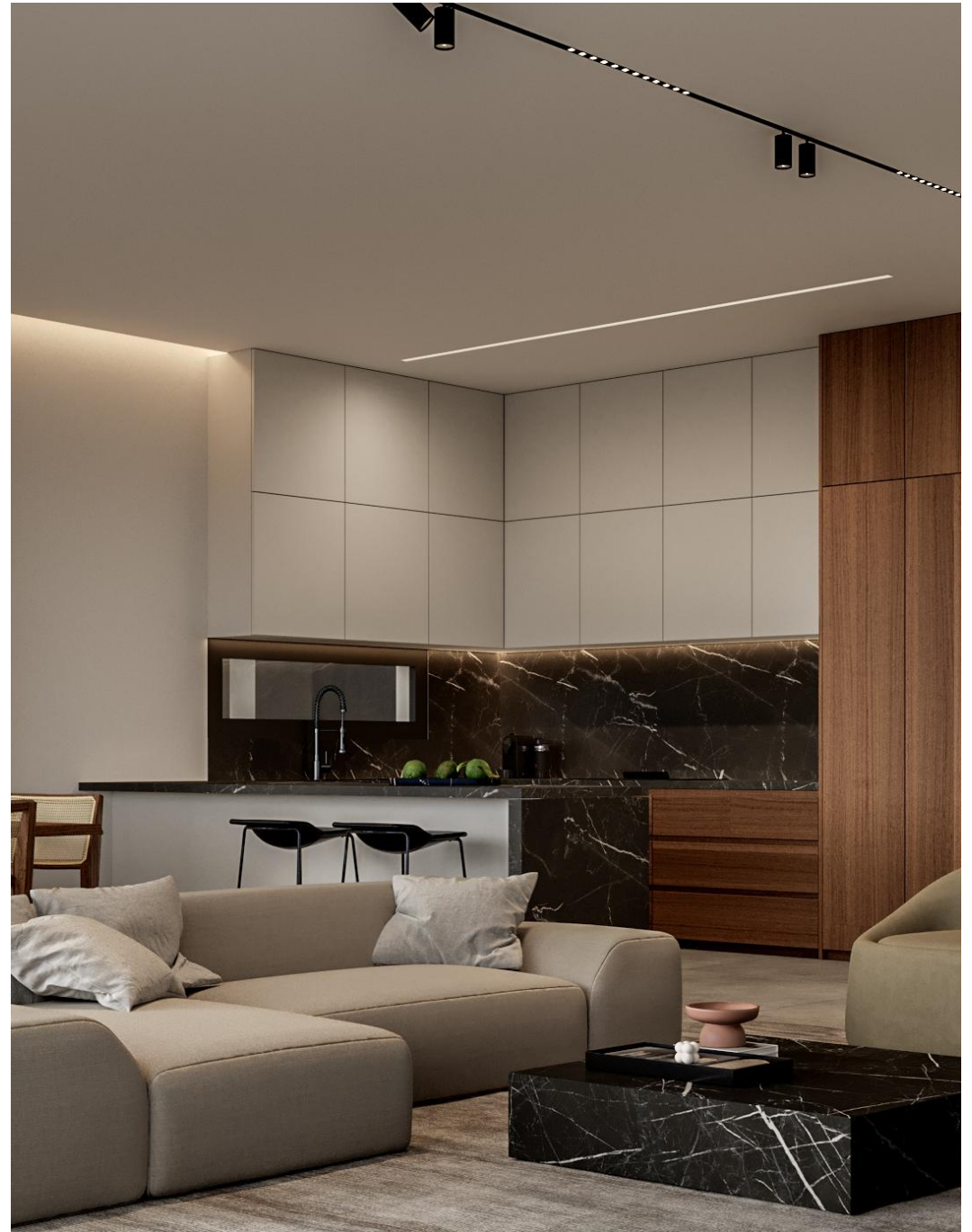
**interliving**

A modern two-story house at night, featuring a large glass facade that reveals the interior living and dining areas. The house has a minimalist design with light-colored walls and dark window frames. A swimming pool is visible in the foreground, illuminated by underwater lights. The word "RIVA" is overlaid in large white letters across the center of the image. The scene is surrounded by lush greenery and trees, creating a serene and luxurious atmosphere.

# RIVA

# MADE FOR LIVING

We are a Cyprus-based boutique company aiming to design and develop properties which surpass expectations with the sole purpose of giving people the choice of better living and better investment.







## WHAT INSPIRES US

A home is more than just an investment, it's a long-lasting connection to a community offering a sense of place. We draw inspiration from this maxim to bring together knowledge and craftsmanship to design, develop and

build a contemporary, sustainable living through innovation in materials and construction methods. Simply put, we are building a futureproof way of living!



# WE ARE BUILDING A FUTUREPROOF WAY OF LIVING



## IT'S A UNIQUE METHOD

We are meticulous, we do our research, and we exhaust the options. We choose our partners wisely and we create spaces where each detail has been accounted for resulting in a successful, perfectly balanced amalgamation of aesthetics and functionality. These are the Interliving properties.



# WHO WE ARE

Interliving was founded as an alternative to the rigid and inflexible property development industry in Cyprus.

With international experience and background in property management, development, finance and sales, Interliving has set out to offer a better experience for those looking for their forever home or a sound financial investment in a crowded market.

# LARNACA



The coastal city of Larnaca is one of the world's 20 most ancient continuously inhabited areas. It is the gateway to Cyprus and a blend of old and new.

From its traditional architecture, authentic taverns and local handicrafts to its cultural sites and religious monuments, old Larnaca is an evocative glimpse into a Cyprus past.

New and modern Larnaca harmoniously intertwines with these elements of ancient Kition, and offers the cosmopolitan visitor beautiful sandy beaches, a bustling promenade, shopping, advanced infrastructure and plenty amenities.

With almost guaranteed sunshine every day, Larnaca is an exciting all year round destination which offers cultural events, numerous attractions, activities and leisure options at close proximity.

Larnaca is a place where "They Always Come Back", not only because its favourite winter guests, the flamingos, which they visit the area's lakes in flocks each year, but also the visitors of Larnaca who keep returning year after year.



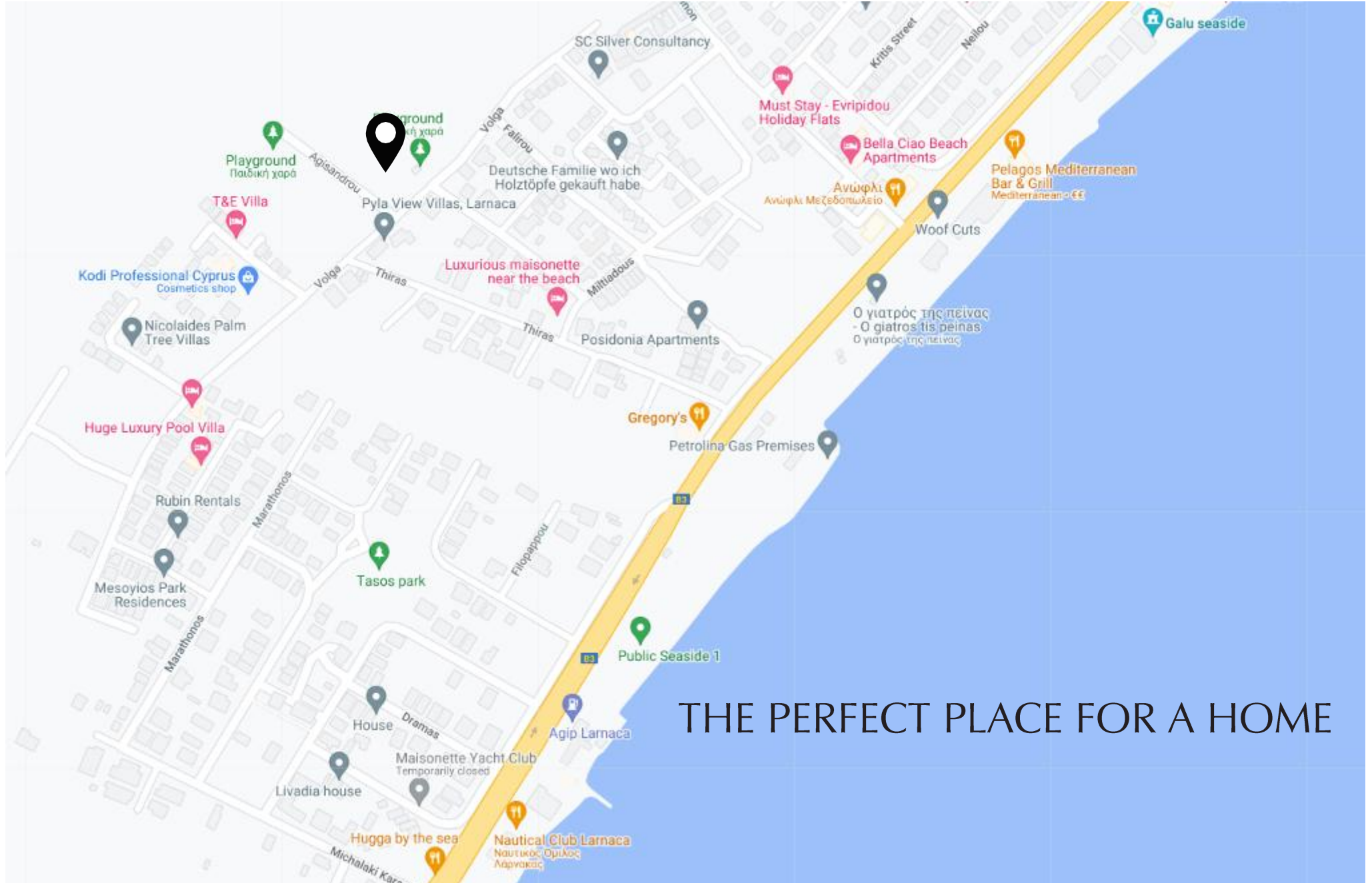
# – RIVA

A collection of contemporary three- and four-bedroom villas perfectly designed for modern living just moments from the beach.

With easy access to the best shopping, dining, and entertainment that Larnaca has to offer, Riva Residences is an amazing place to call home.



# LOCATION





# LOCATION

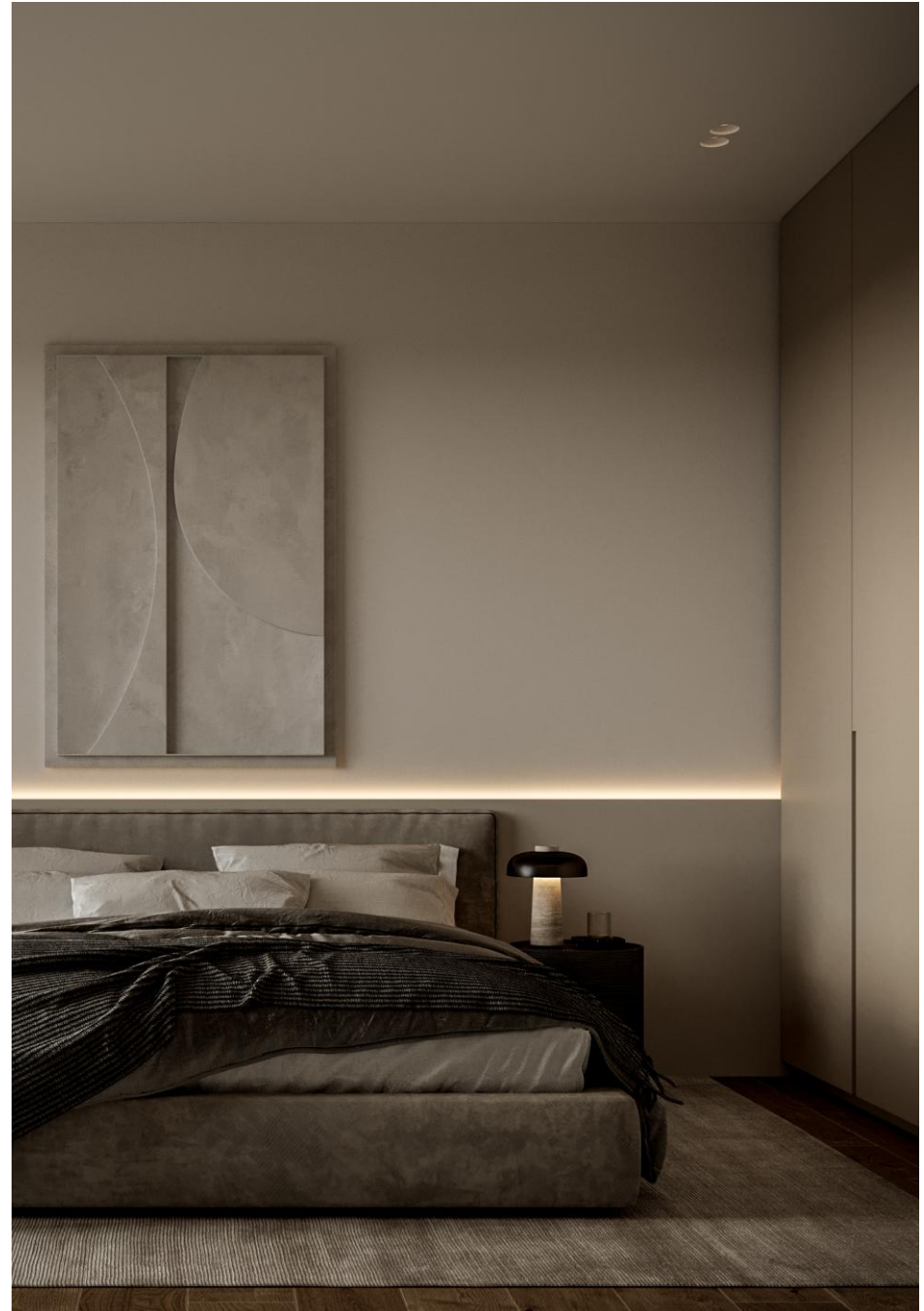




THE DESIGN

# THE DETAILS ARE NOT THE DETAILS. THEY MAKE THE DESIGN.

All the villas have ample, comfortable interior spaces and spacious balconies. European ceramic tiles in bathrooms and living areas, high-end kitchen cabinets and wardrobes are part of the extensive list of features the development offers.





## DEVELOPMENT HIGHLIGHTS

Marble dressed façade walls.

Entrance steps with hidden lighting.

Modern self-standing letter box with house number.

Marble stairs with glass railings.

High-standard kitchen cabinets and wardrobes.

High-quality European ceramic flooring (120cm x 60cm).

High-standard sanitary ware from top European brands.

Energy Class A with thermal aluminum window frames with double-glazing.

Photovoltaic system of 3KW per villa.

Security entrance doors and intercom system.

Parking area lighting will be controlled by movement sensors.

Provision for electric car charging.

Choice of upgrades offered to the buyers





interliving





interliving





interliving





interliving





interliving





interliving





interliving



interliving





interliving





**interliving**





interliving





interliving





interliving





interliving





interliving





interliving



# MASTERPLAN



UNIT	TYPE	PLOT SIZE SQM	INTERNAL SQM	COVERED VER. SQM	TOTAL COVERED SQM	UNCOVERED VER. SQM	COVERED PARKING SQM	POOL
V5	3 BED	189	145.2	21.8	167.0	13.9	23.2	-
V6	3 BED	204	144.7	19.1	163.8	6.9	19.5	OPTIONAL
V7	3 BED	210	142.7	19.1	161.8	10.9	32.9*	OPTIONAL
V11	3 + 1 BED	258	192.1	19.0	211.1	16.6	35.0*	OPTIONAL
V13	3 BED	272	151.7	18.4	170.1	11.7	17.4*	OPTIONAL
V14	3 BED	267	156.1	18.5	174.6	9.6	18.3*	OPTIONAL
V15	4 BED	351	188.6	14.7	203.3	28.0	18.6*	OPTIONAL
V16	4 BED	406	188.6	14.5	203.1	16.8	18.6*	OPTIONAL
V17	4 BED	337	184.8	28.8	213.6	9.1	17.9*	OPTIONAL
V18	3 BED	270	155	22.9	177.9	35.7	18*	OPTIONAL
V19	3 BED	260	155	22.9	177.9	23.3	18*	OPTIONAL
V20	3 BED	260	173.8	12.3	186.1	17.4	17.5*	-
V21	4 BED	319	194.7	16.2	210.9	28.7	21.6*	OPTIONAL
V22	4 BED	339	182.2	14.5	196.7	22.3	24.6*	OPTIONAL

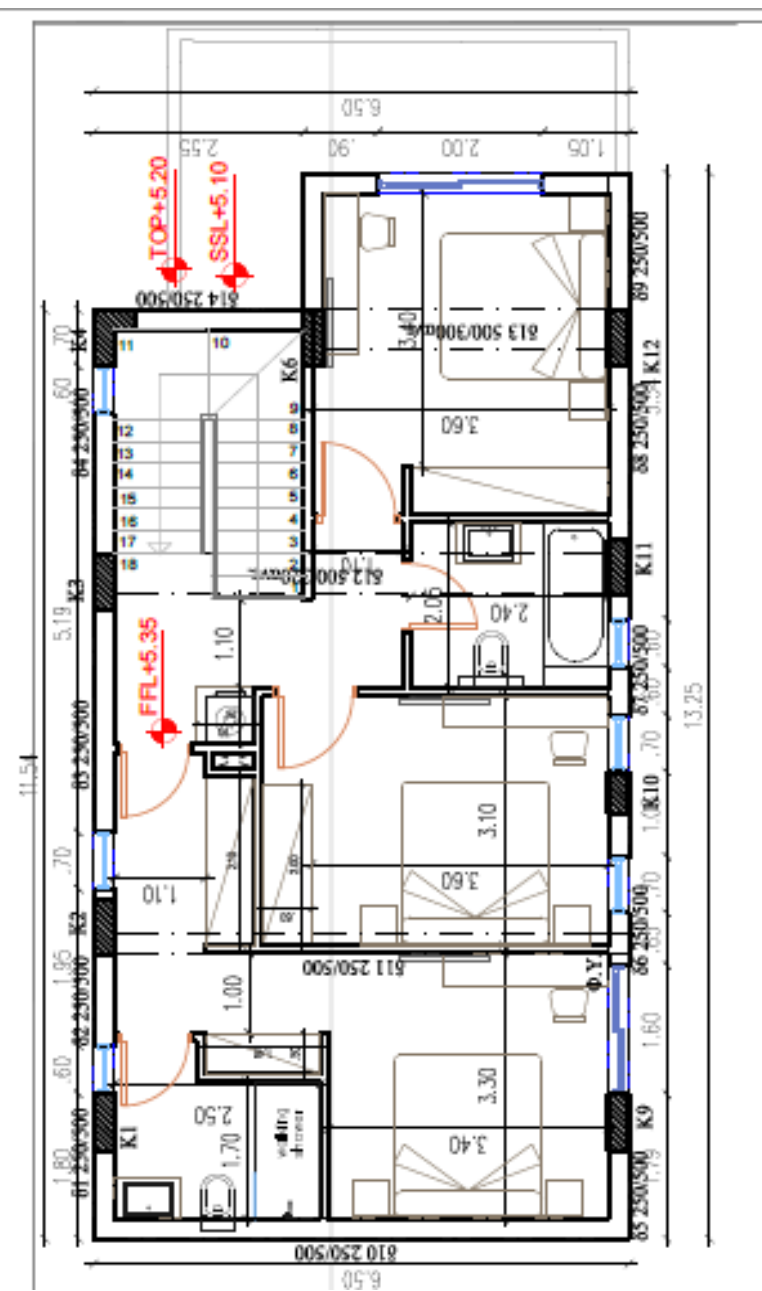
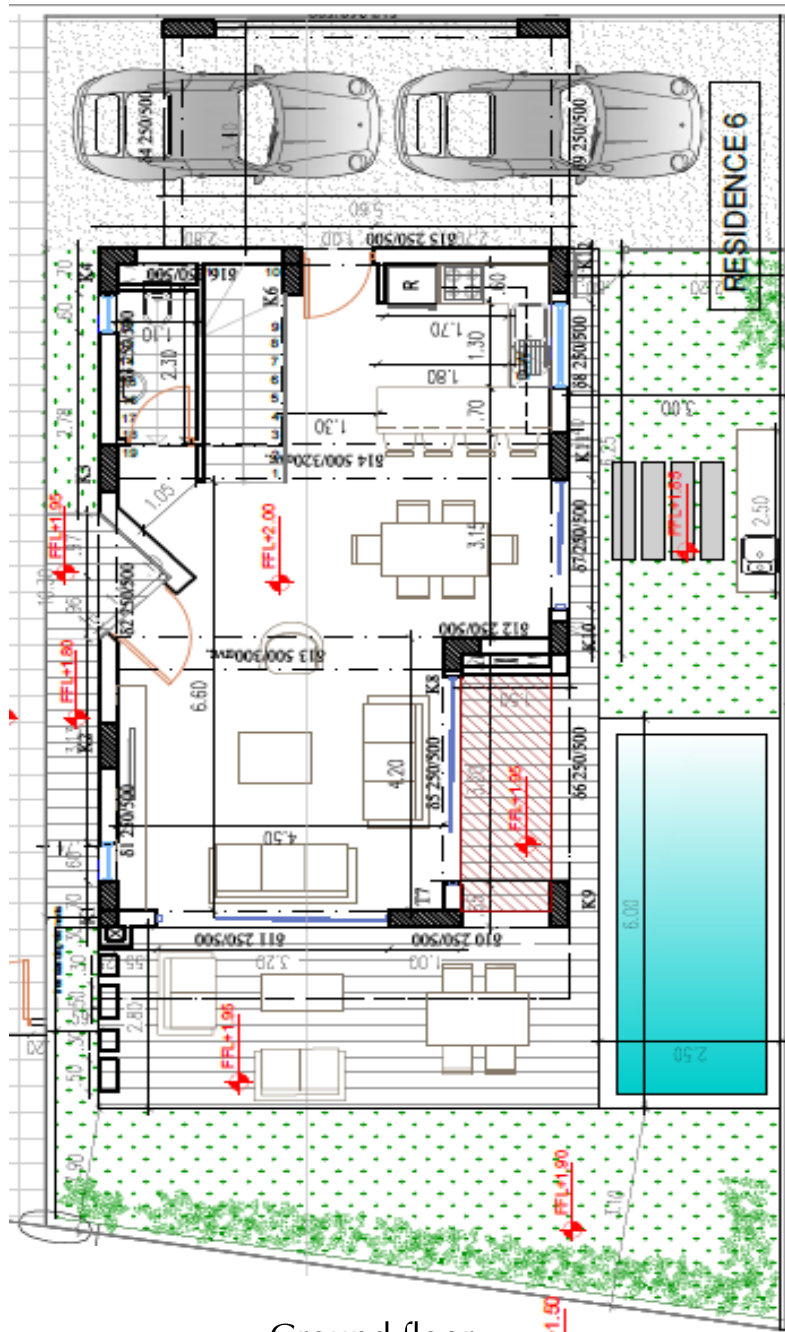
\* Double Side By Side parking



# FLOORPLANS – V05

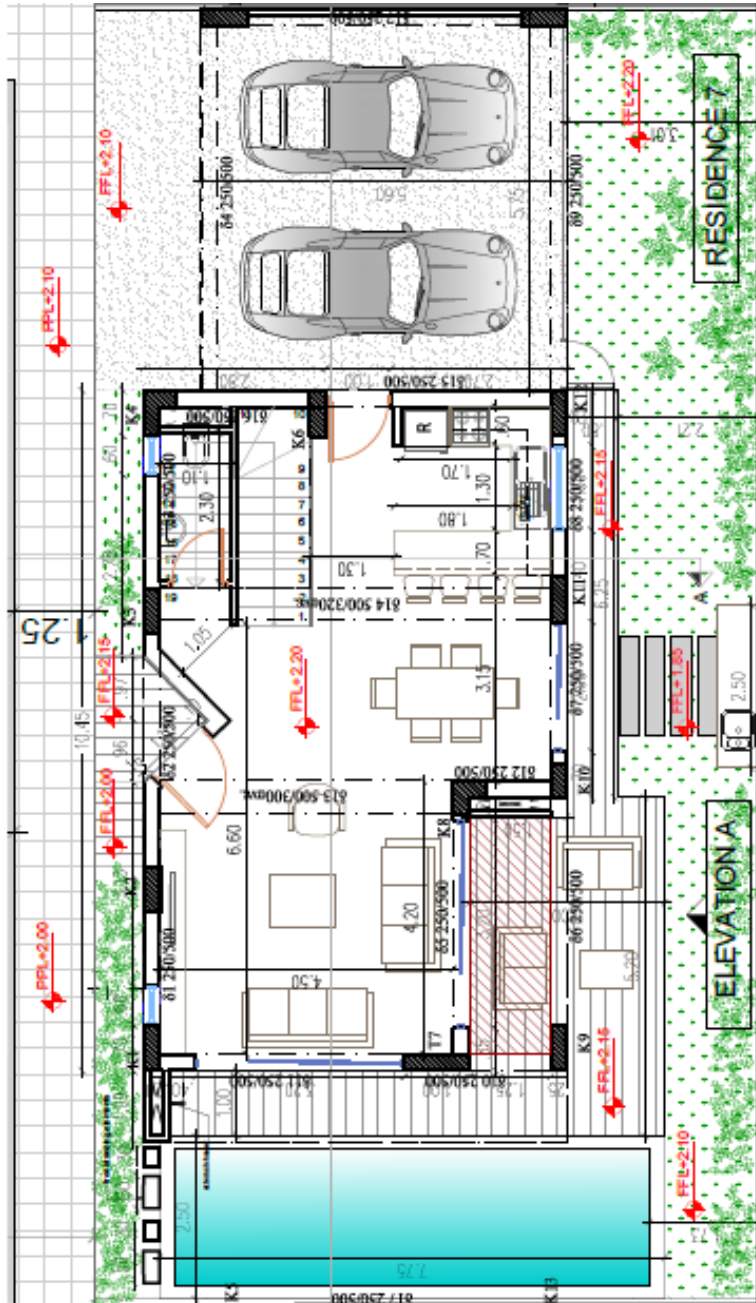


# FLOORPLANS – V06

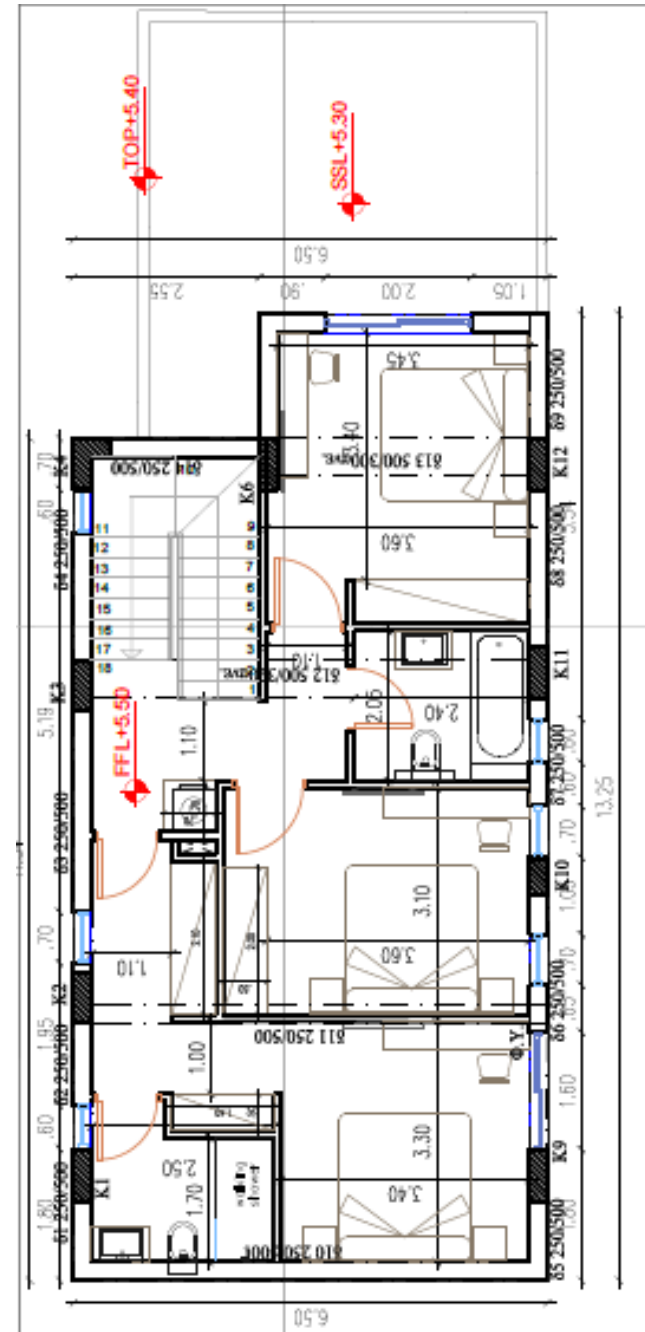




# FLOORPLANS – V07



Ground floor



First floor

## interliving

This architectural floor plan shows a building layout with various rooms and dimensions. Key features include:

- Rooms and Dimensions:**
  - Top left: A large room with a width of 7.70 and a depth of 2.65.
  - Top center: A room with a width of 7.70 and a depth of 2.70.
  - Top right: A room with a width of 7.70 and a depth of 2.70.
  - Middle left: A room with a width of 7.20 and a depth of 5.10.
  - Middle center: A room with a width of 7.20 and a depth of 5.10.
  - Middle right: A room with a width of 7.20 and a depth of 5.10.
  - Bottom left: A room with a width of 7.20 and a depth of 5.10.
  - Bottom center: A room with a width of 7.20 and a depth of 5.10.
  - Bottom right: A room with a width of 7.20 and a depth of 5.10.
- Elevations:**
  - FFL+2.25 (Finished Floor Level +2.25) is indicated at the top.
  - FFL+2.30 (Finished Floor Level +2.30) is indicated in the middle.
  - FFL+2.35 (Finished Floor Level +2.35) is indicated at the bottom.
- Other Features:**
  - Stairs are located in the bottom left corner.
  - Entrances are marked with 'K' (K4, K5, K7, K8, K9).
  - Dimensions for various sections are provided, such as 81.300/600, 81.300/500, 83.250/500, 85.250/500, 86.250/500, 87.250/500, 88.250/500, 89.250/500, 90.250/500, 91.250/500, 92.250/500, 93.250/500, 94.250/500, 95.250/500, 96.250/500, 97.250/500, 98.250/500, 99.250/500, 100.250/500.

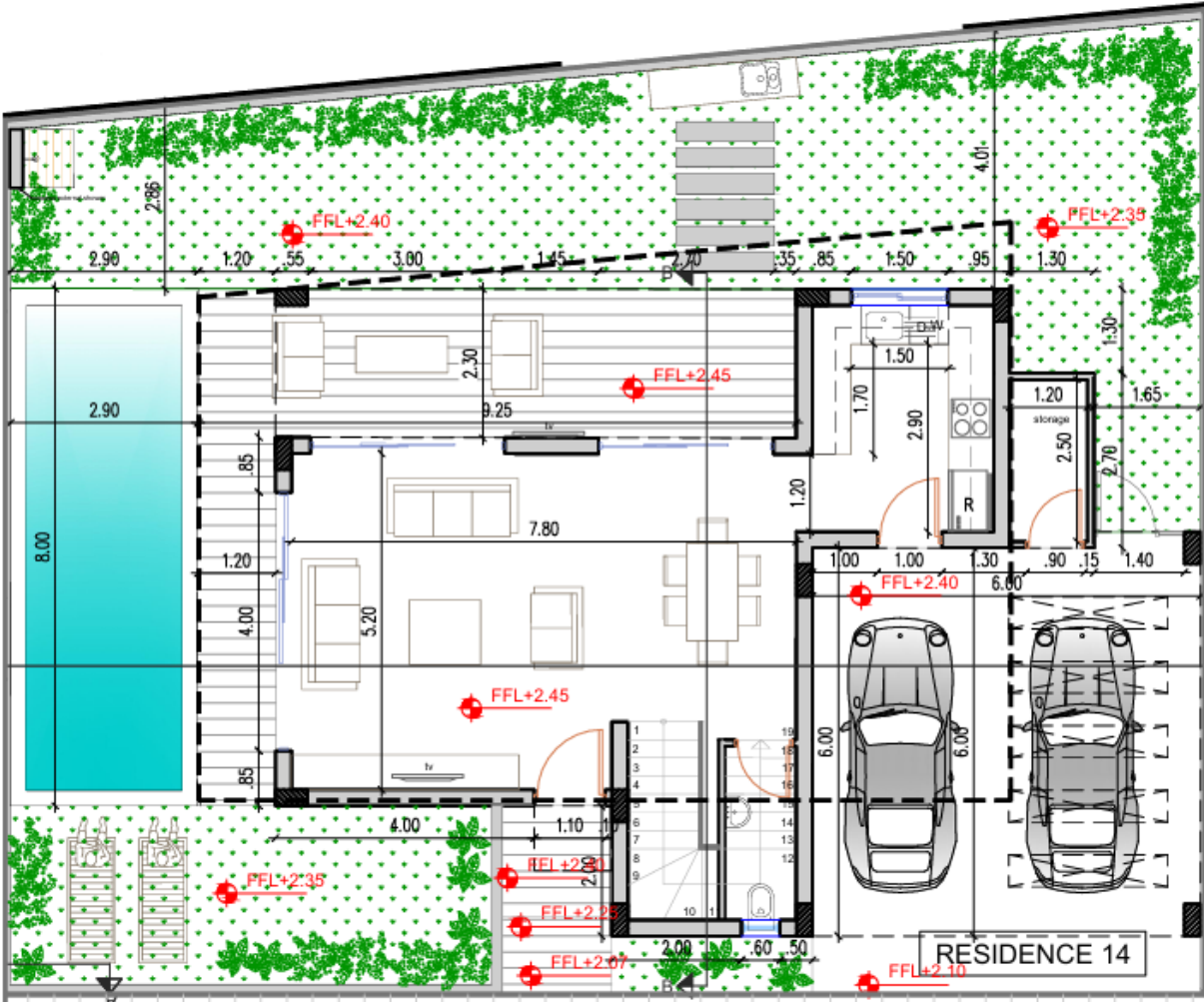
[illegible]

Roof garden **interliving**

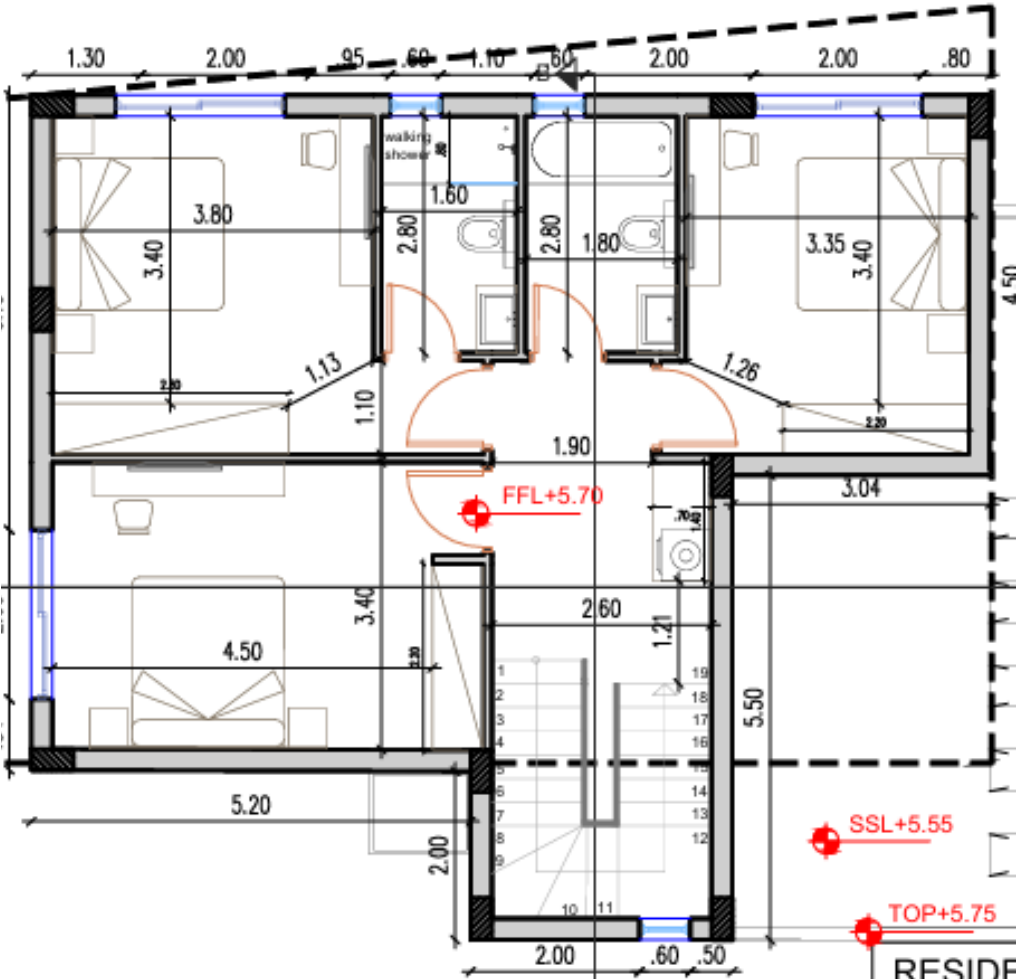




# FLOORPLANS – V14



Ground floor



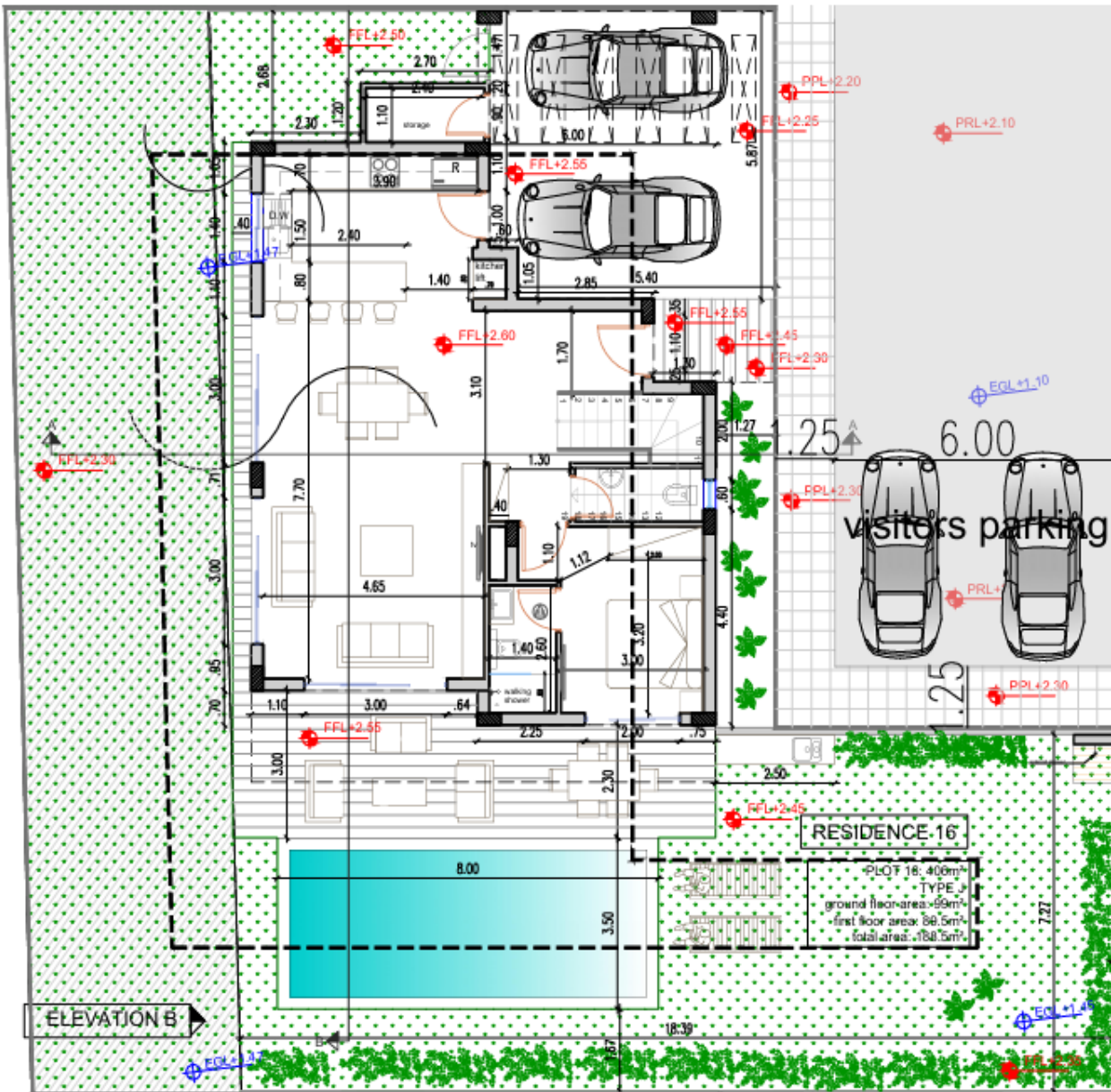
First floor

interliving

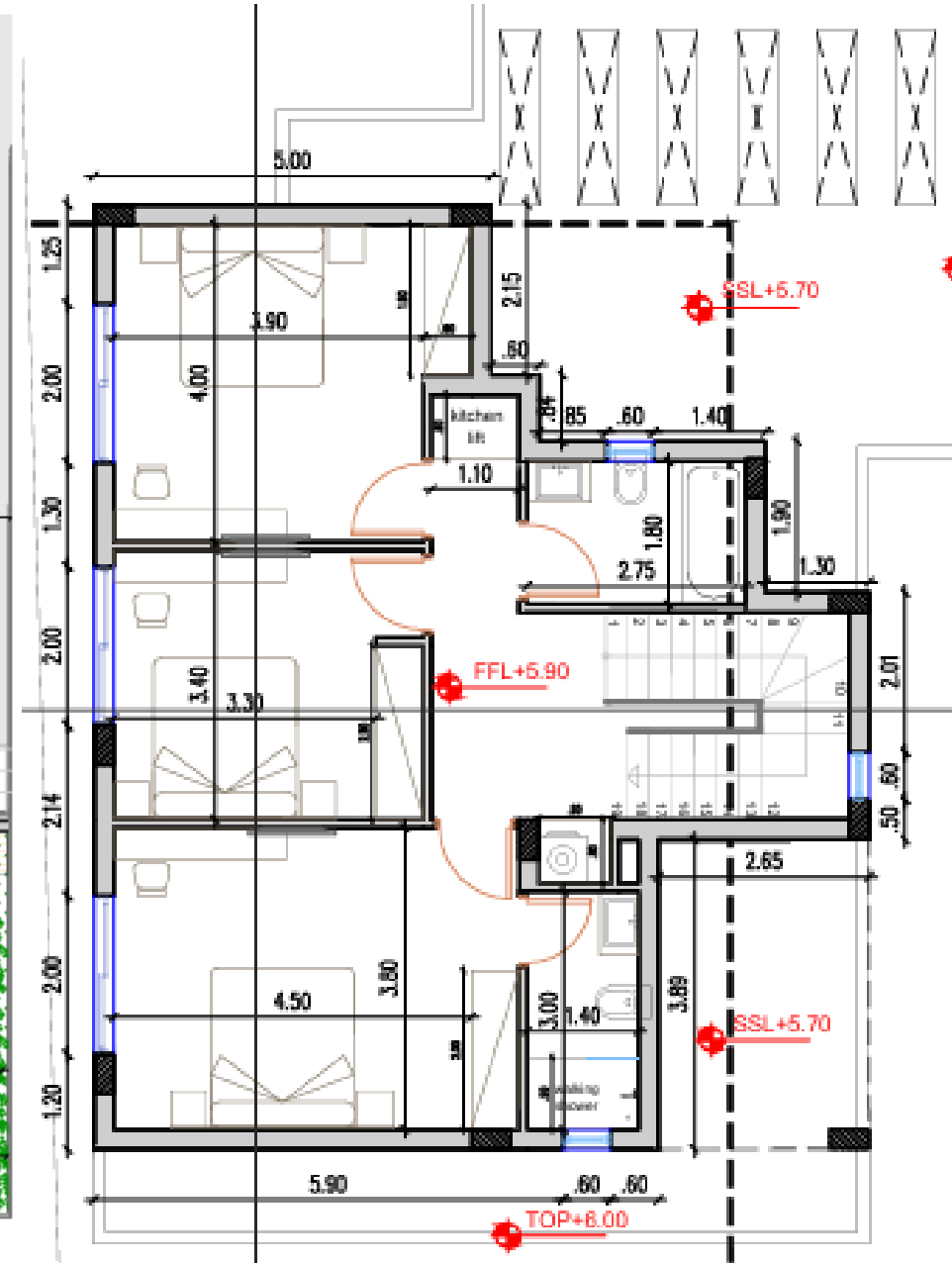


[illegible][illegible]**interliving**

# FLOORPLANS – V16



Ground floor

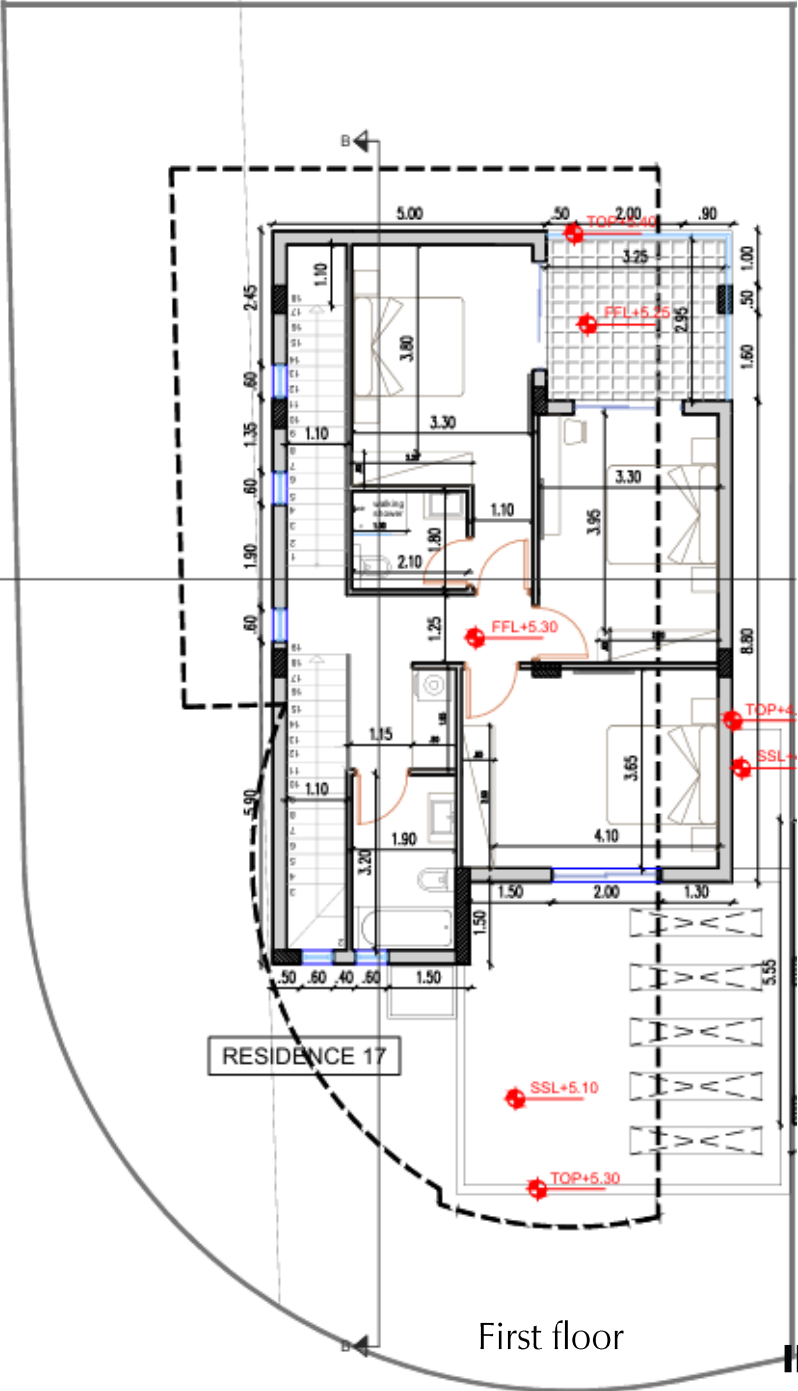
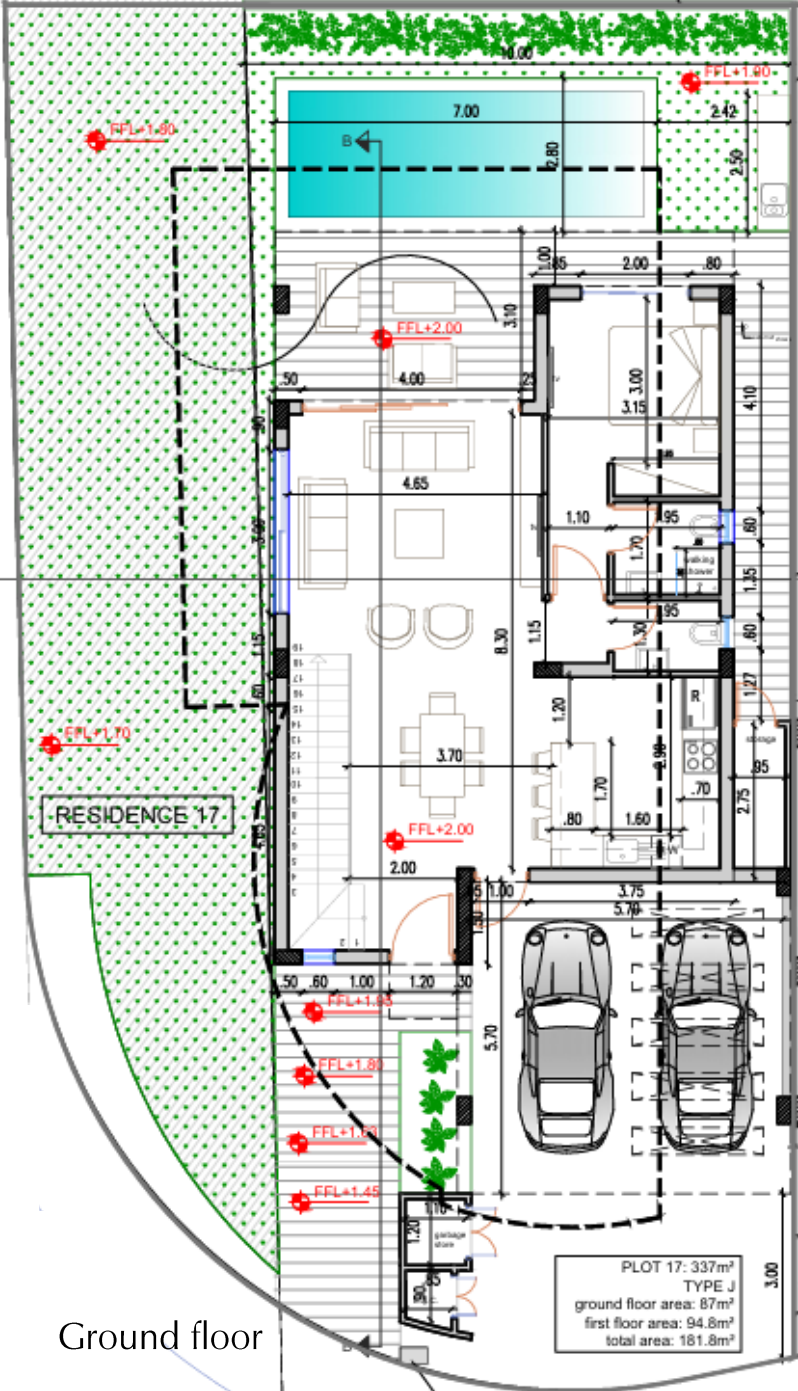


First floor

## interliving

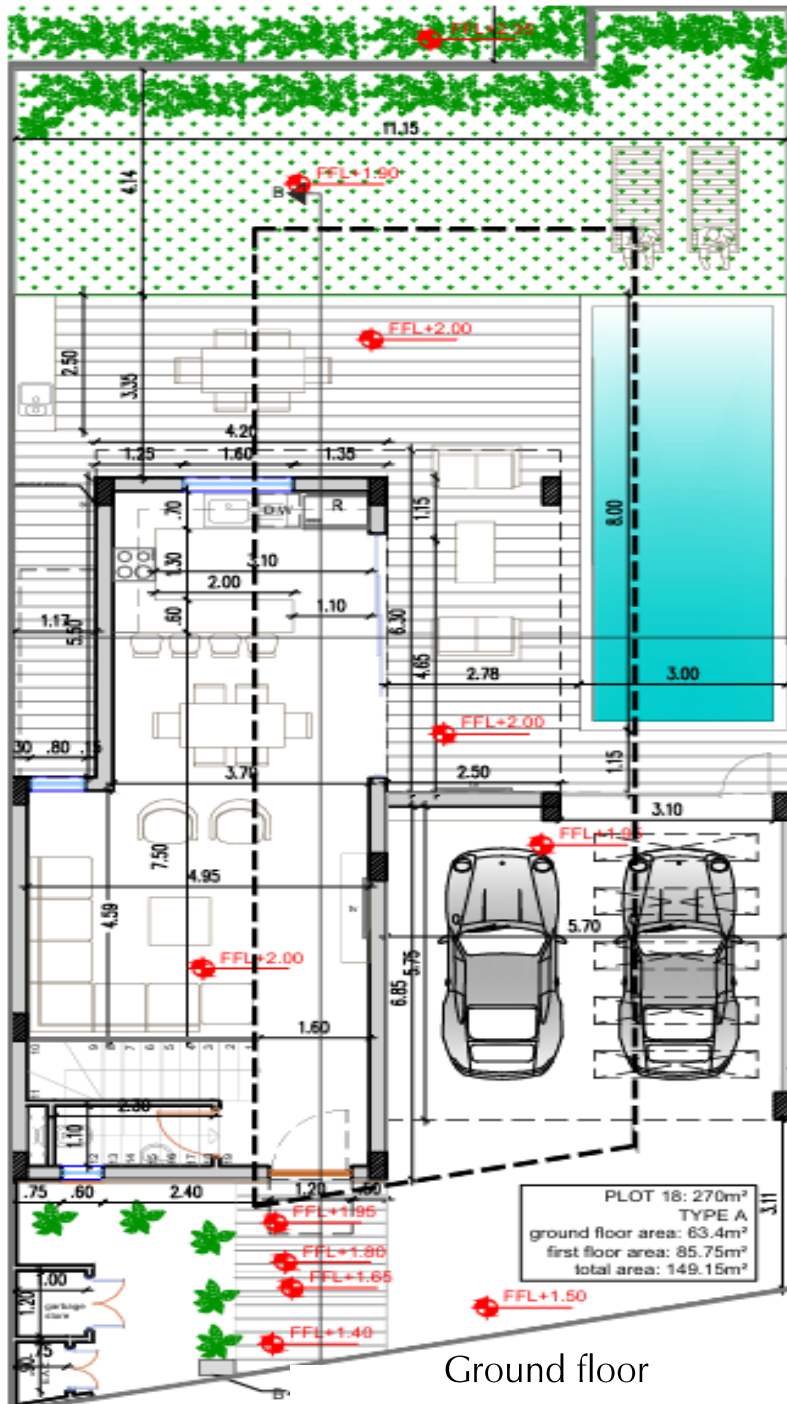


# FLOORPLANS – V17

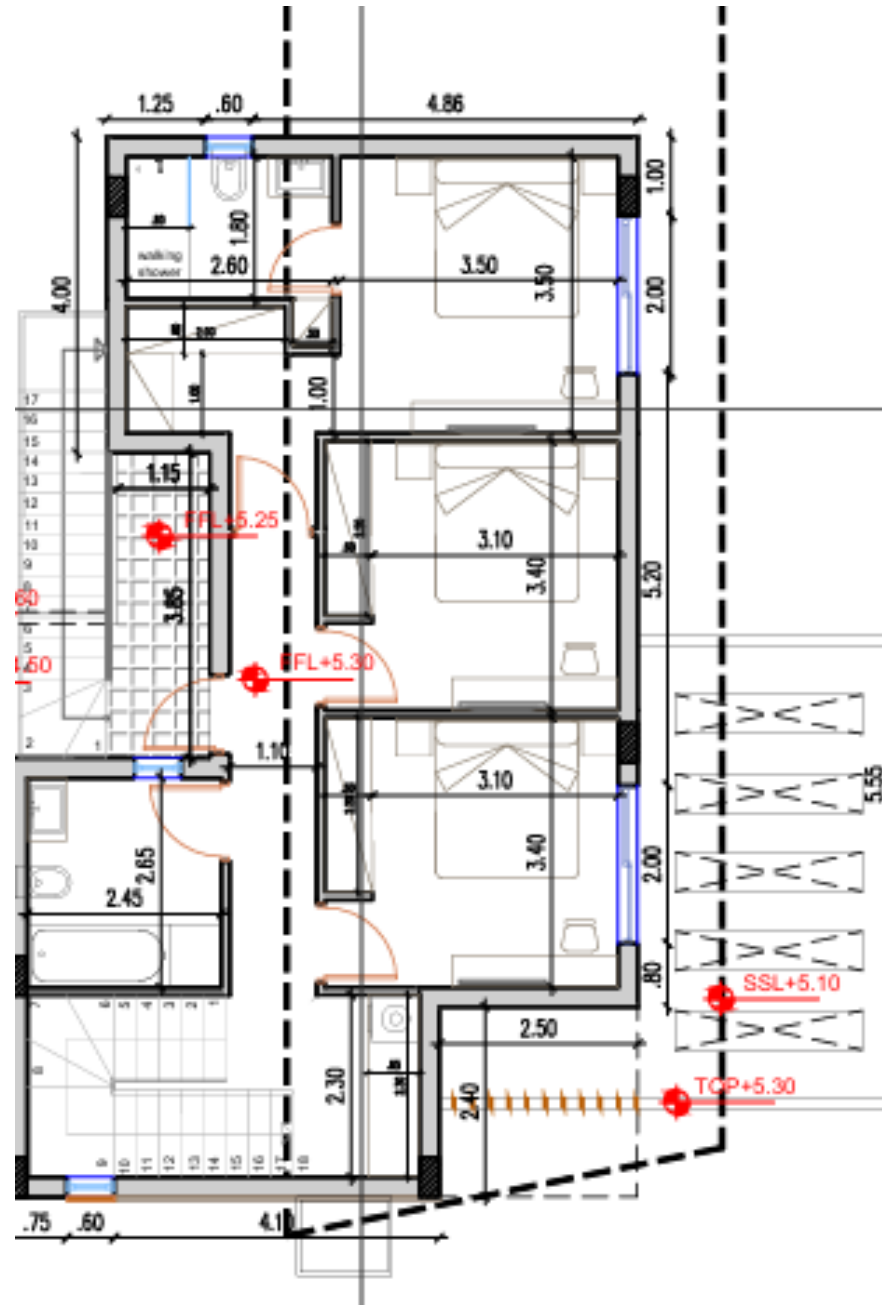


interliving

# FLOORPLANS – V18



### Ground floor

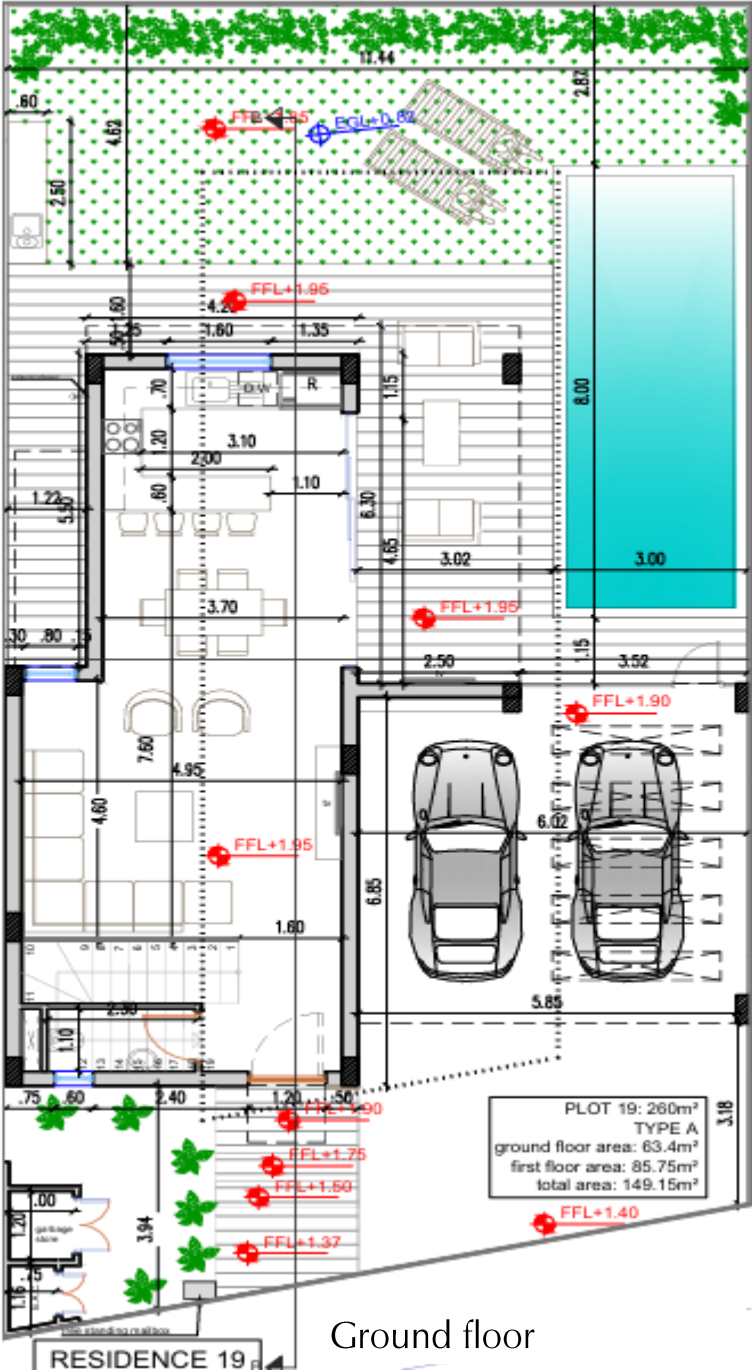


First floor

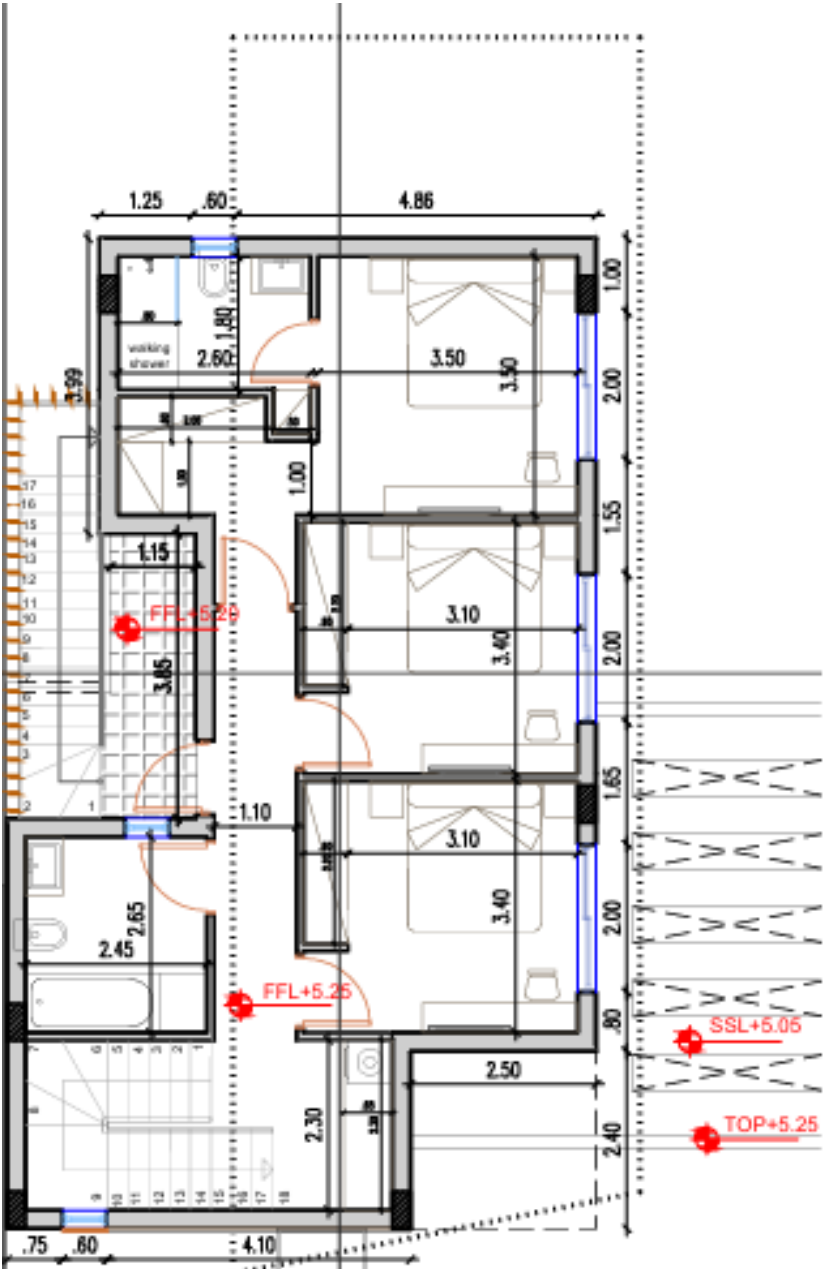
**interliving**



# FLOORPLANS – V19

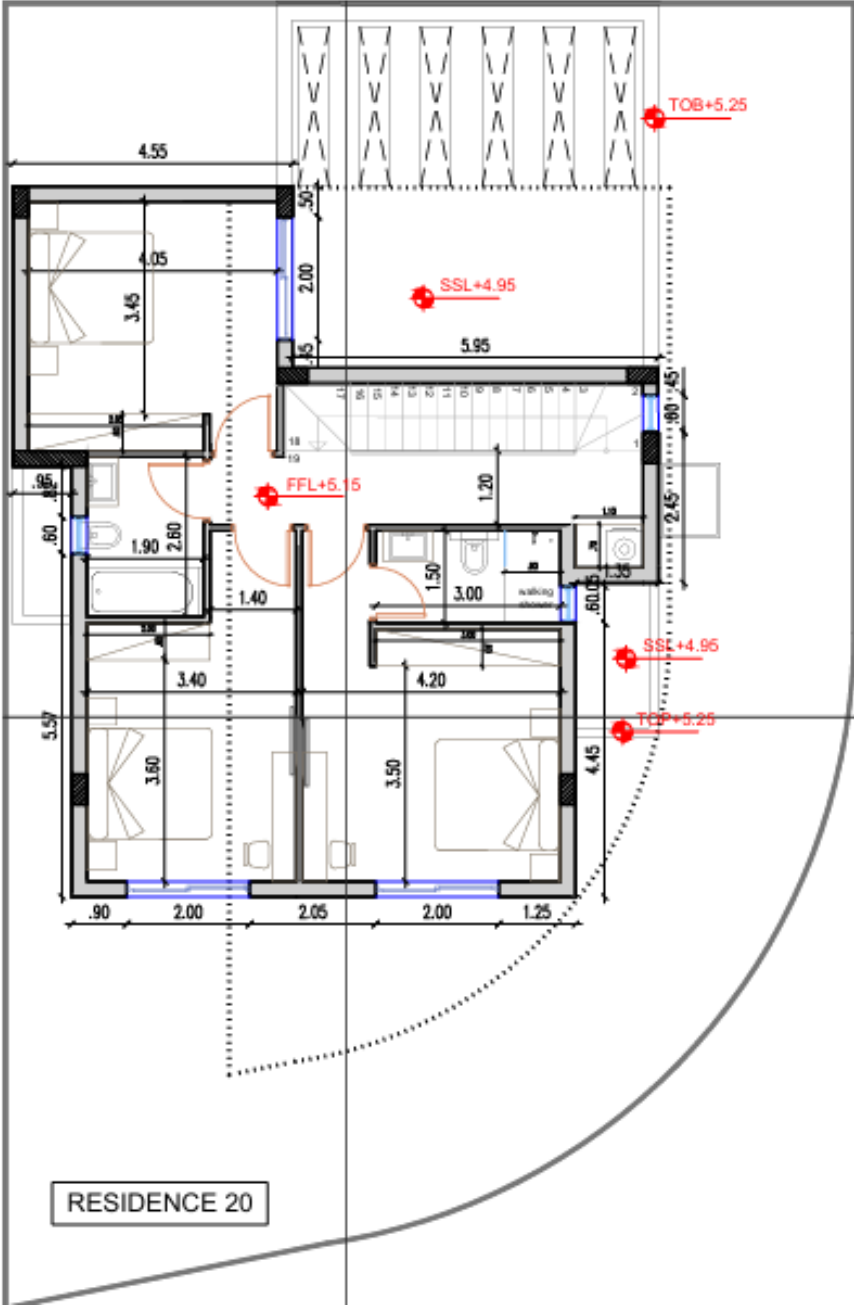
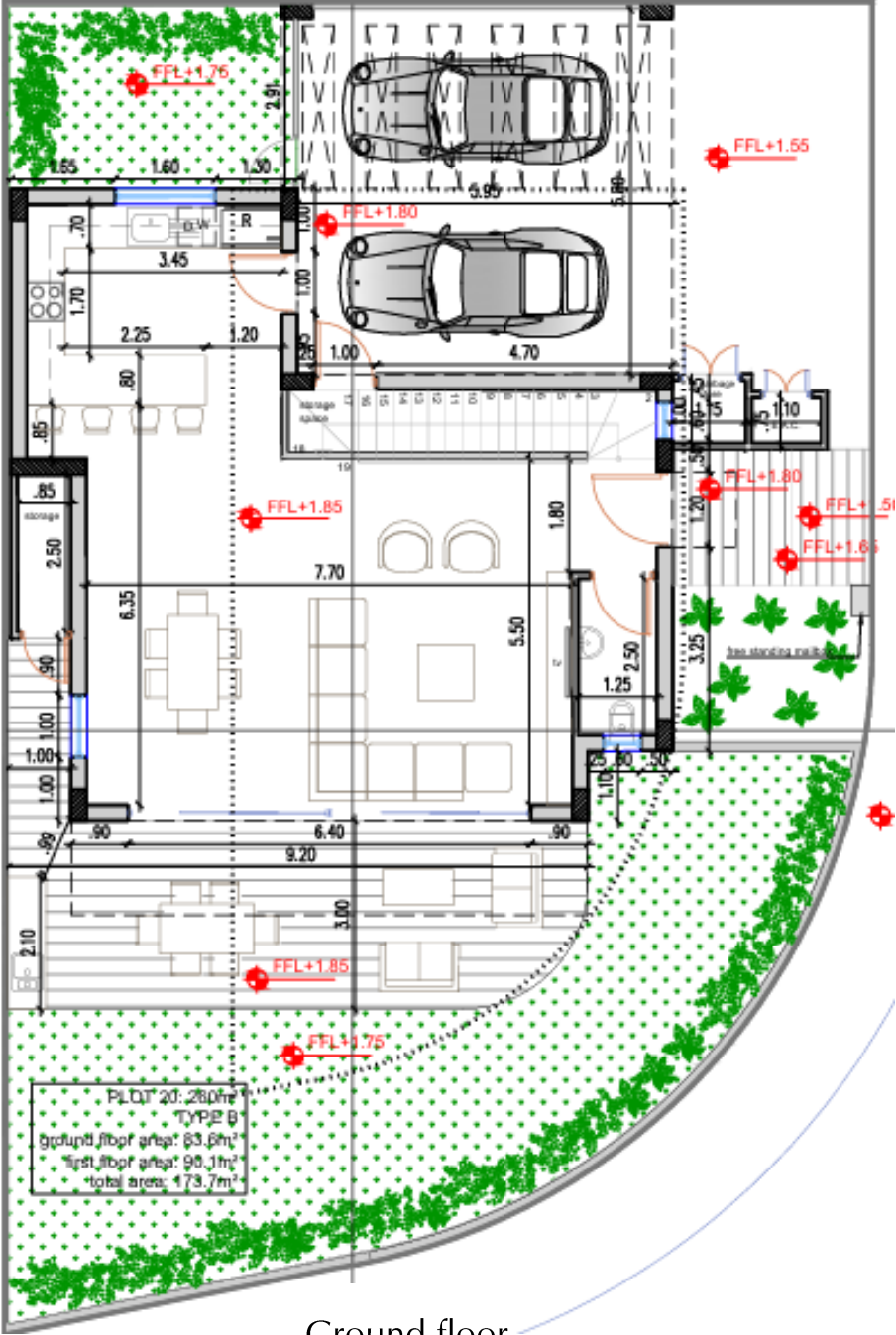


Ground floor



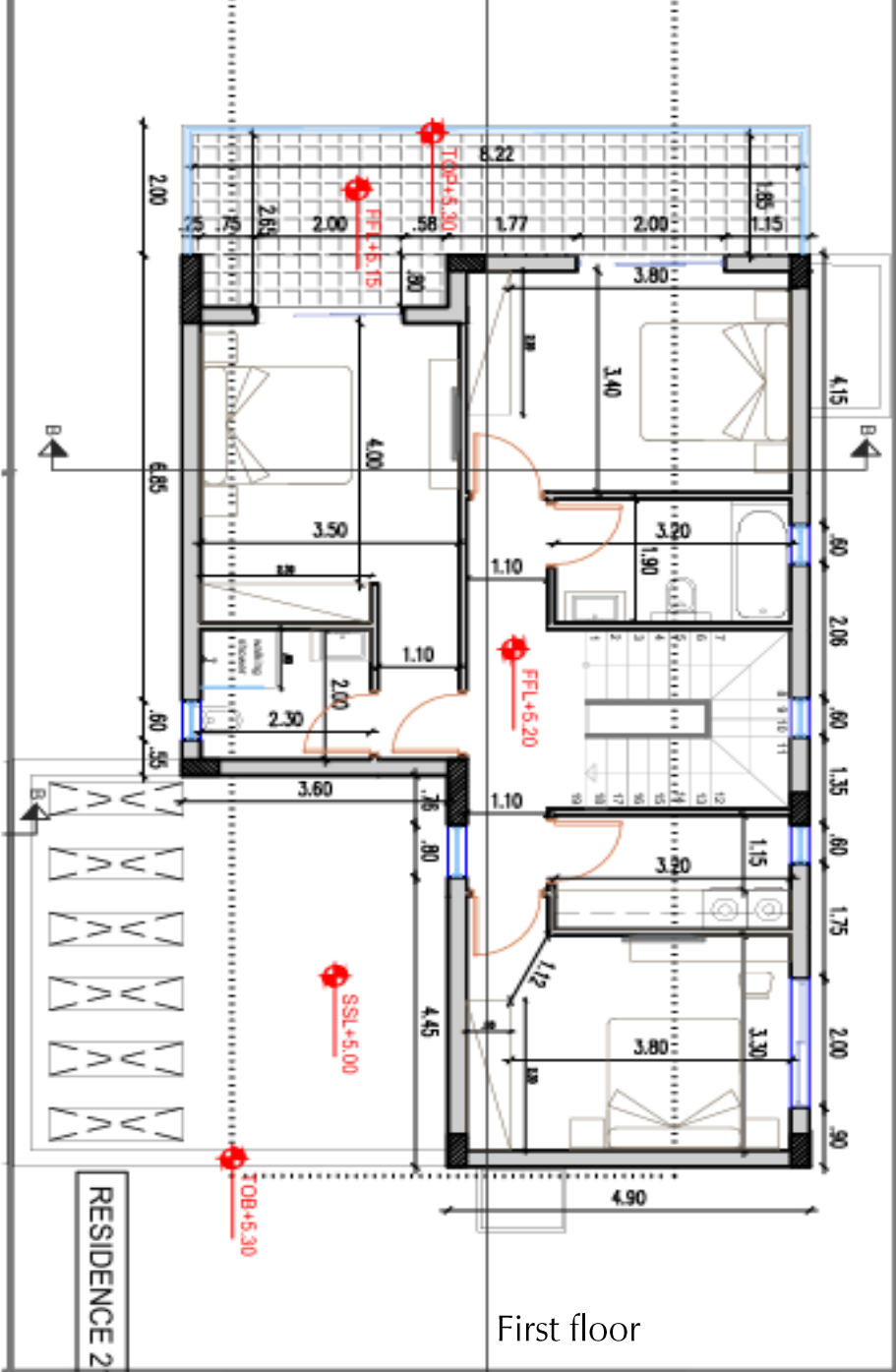
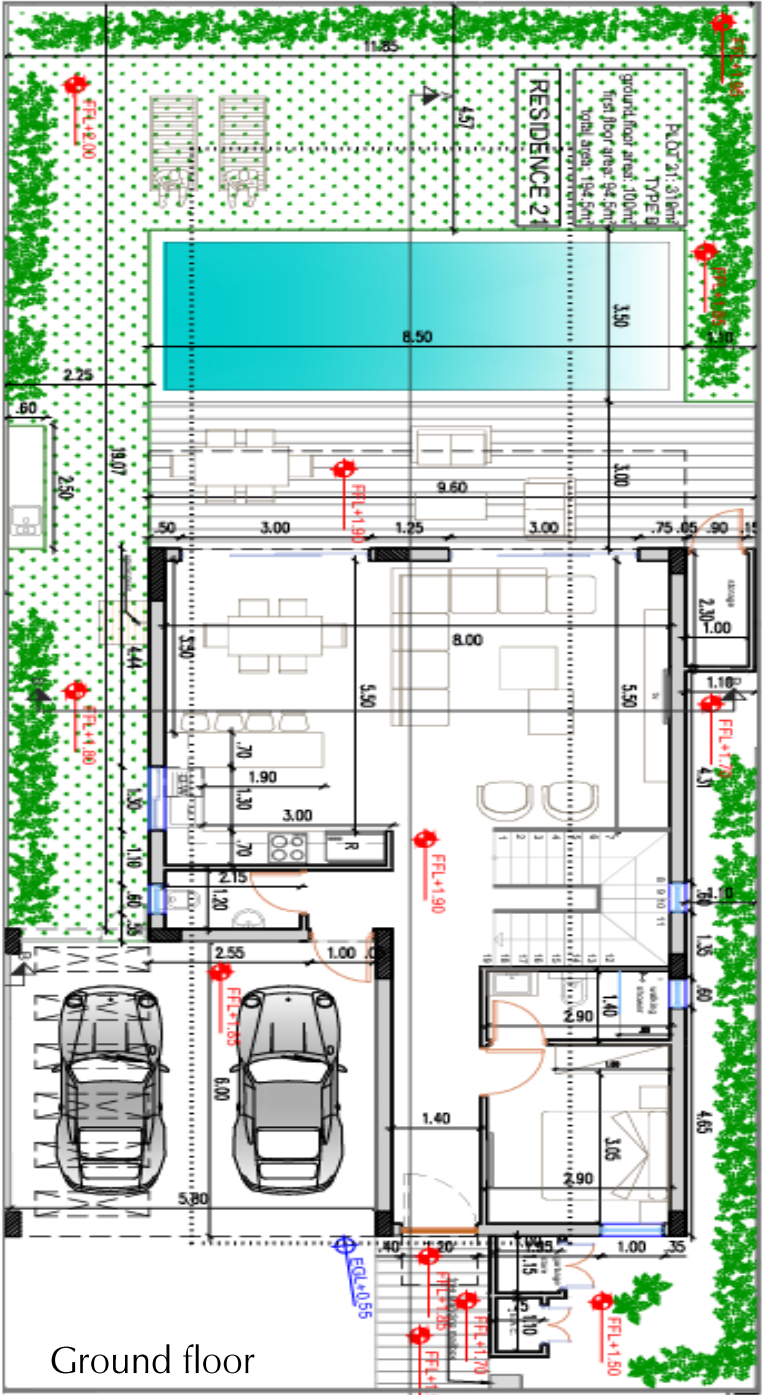
First floor

# FLOORPLANS – V20



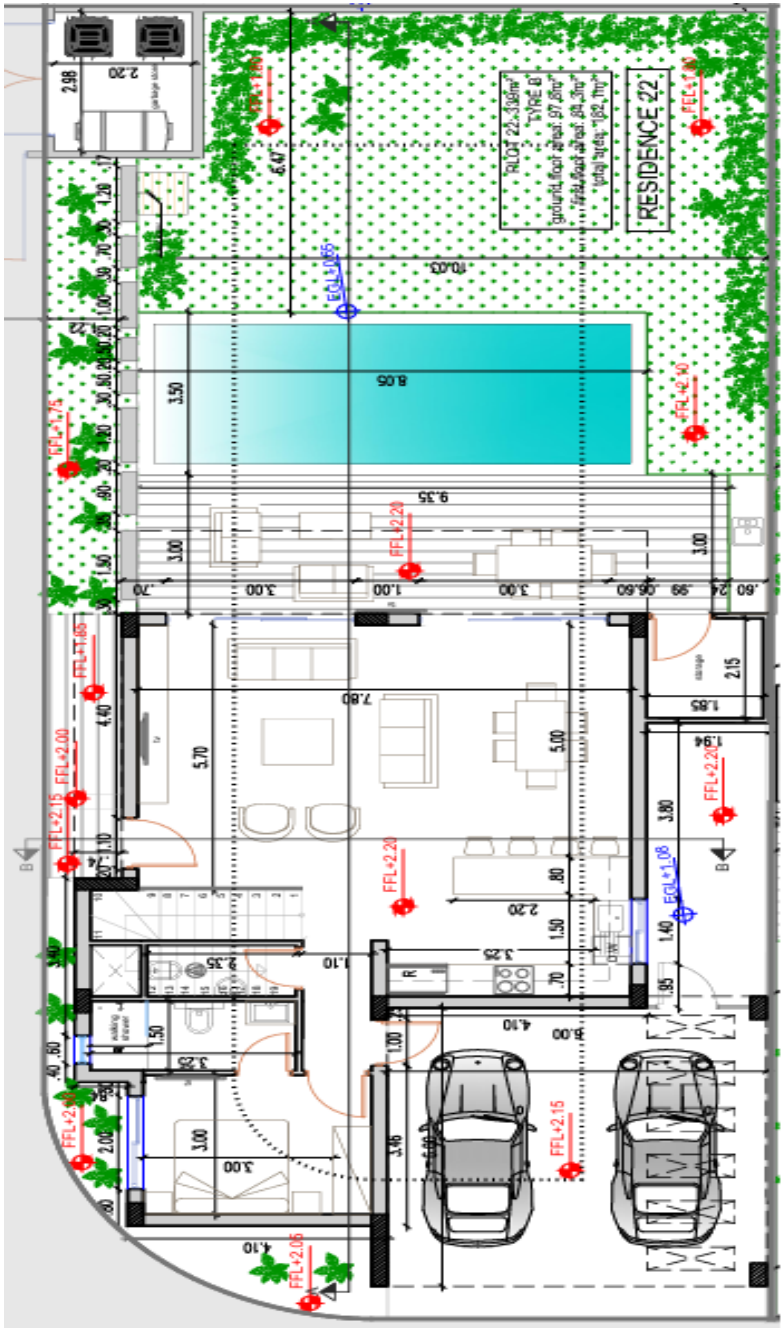


# FLOORPLANS – V21

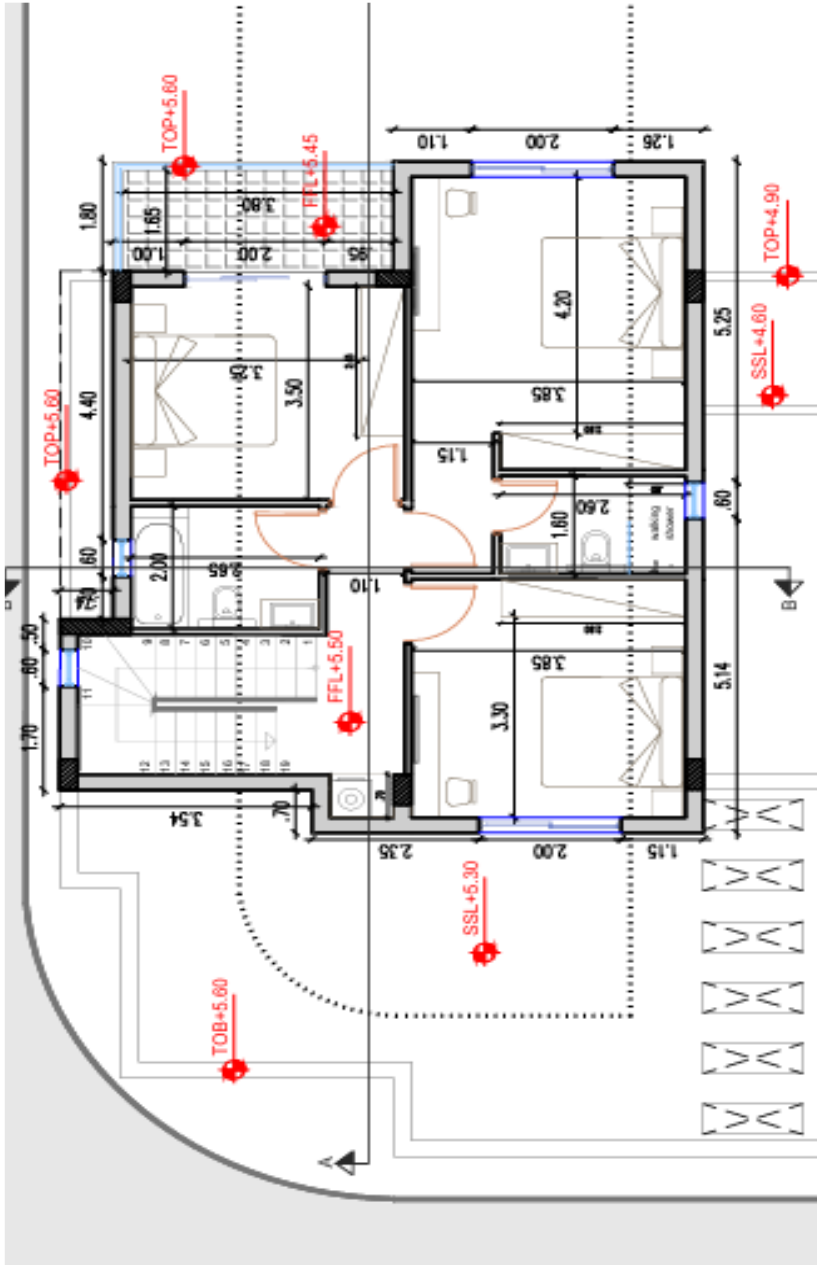


interliving

# FLOORPLANS – V22



Ground floor



First floor





Piliou Street 11-13, 7th Floor,  
Office 701, 6037 Larnaca, Cyprus  
70009080

[sales@interlivinggroup.com](mailto:sales@interlivinggroup.com)

# interliving

[interlivinggroup.com](http://interlivinggroup.com)