

RIVA



MODERN
LIVING
BY THE SEA

A project by

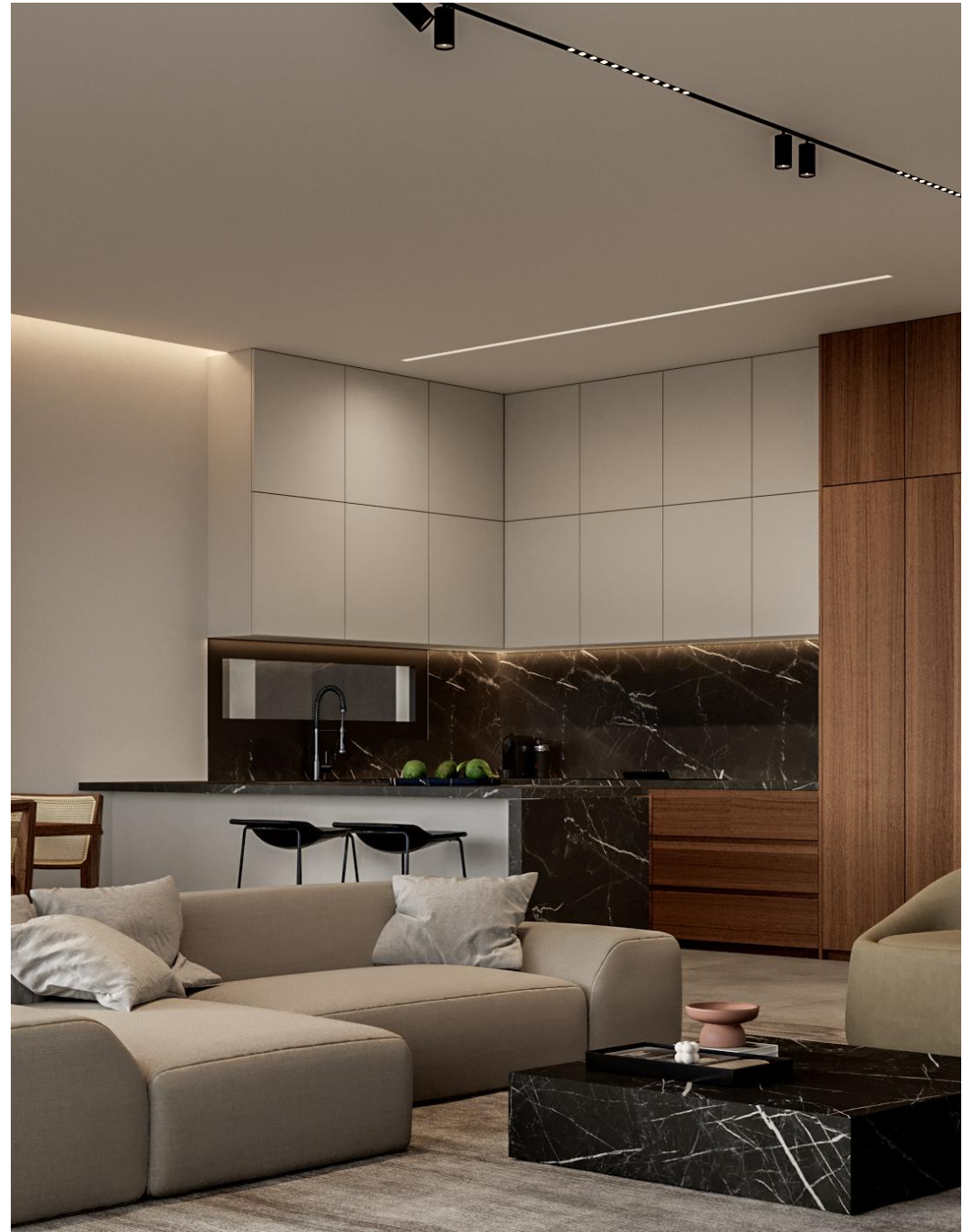
interliving



RIVA

MADE FOR LIVING

We are a Cyprus-based boutique company aiming to design and develop properties which surpass expectations with the sole purpose of giving people the choice of better living and better investment.





WHAT INSPIRES US

A home is more than just an investment, it's a long-lasting connection to a community offering a sense of place. We draw inspiration from this maxim to bring together knowledge and craftsmanship to design, develop and

build a contemporary, sustainable living through innovation in materials and construction methods. Simply put, we are building a futureproof way of living!

WE ARE BUILDING A FUTUREPROOF WAY OF LIVING



IT'S A UNIQUE METHOD

We are meticulous, we do our research, and we exhaust the options. We choose our partners wisely and we create spaces where each detail has been accounted for resulting in a successful, perfectly balanced amalgamation of aesthetics and functionality. These are the Interliving properties.



WHO WE ARE

Interliving was founded as an alternative to the rigid and inflexible property development industry in Cyprus.

With international experience and background in property management, development, finance and sales, Interliving has set out to offer a better experience for those looking for their forever home or a sound financial investment in a crowded market.

LARNACA



The coastal city of Larnaca is one of the world's 20 most ancient continuously inhabited areas. It is the gateway to Cyprus and a blend of old and new.

From its traditional architecture, authentic taverns and local handicrafts to its cultural sites and religious monuments, old Larnaca is an evocative glimpse into a Cyprus past.

New and modern Larnaca harmoniously intertwines with these elements of ancient Kition, and offers the cosmopolitan visitor beautiful sandy beaches, a bustling promenade, shopping, advanced infrastructure and plenty amenities.

With almost guaranteed sunshine every day, Larnaca is an exciting all year round destination which offers cultural events, numerous attractions, activities and leisure options at close proximity.

Larnaca is a place where "They Always Come Back", not only because its favourite winter guests, the flamingos, which they visit the area's lakes in flocks each year, but also the visitors of Larnaca who keep returning year after year.

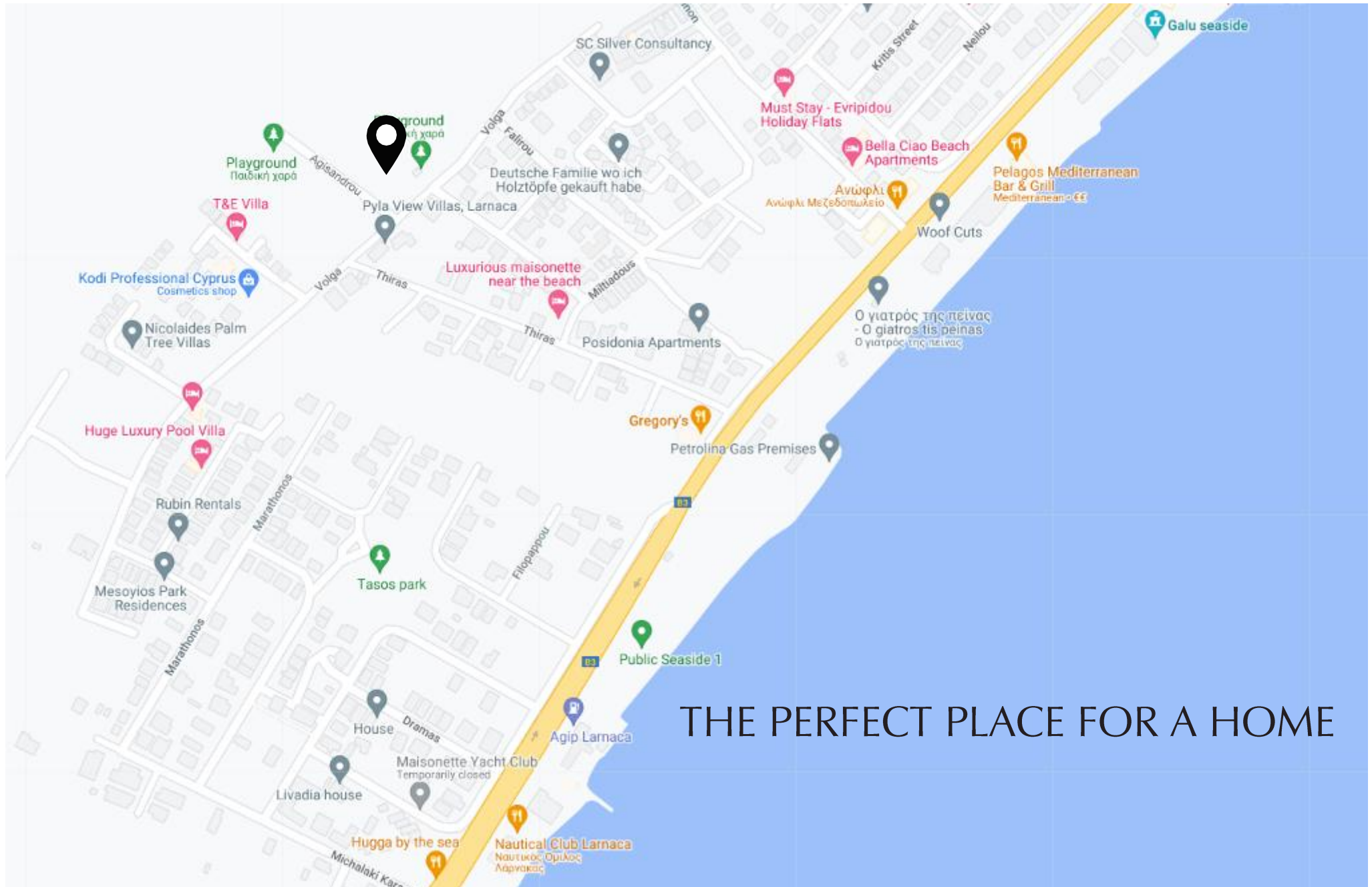
– RIVA

A collection of contemporary three- and four-bedroom villas perfectly designed for modern living just moments from the beach.

With easy access to the best shopping, dining, and entertainment that Larnaca has to offer, Riva Residences is an amazing place to call home.



LOCATION



THE PERFECT PLACE FOR A HOME

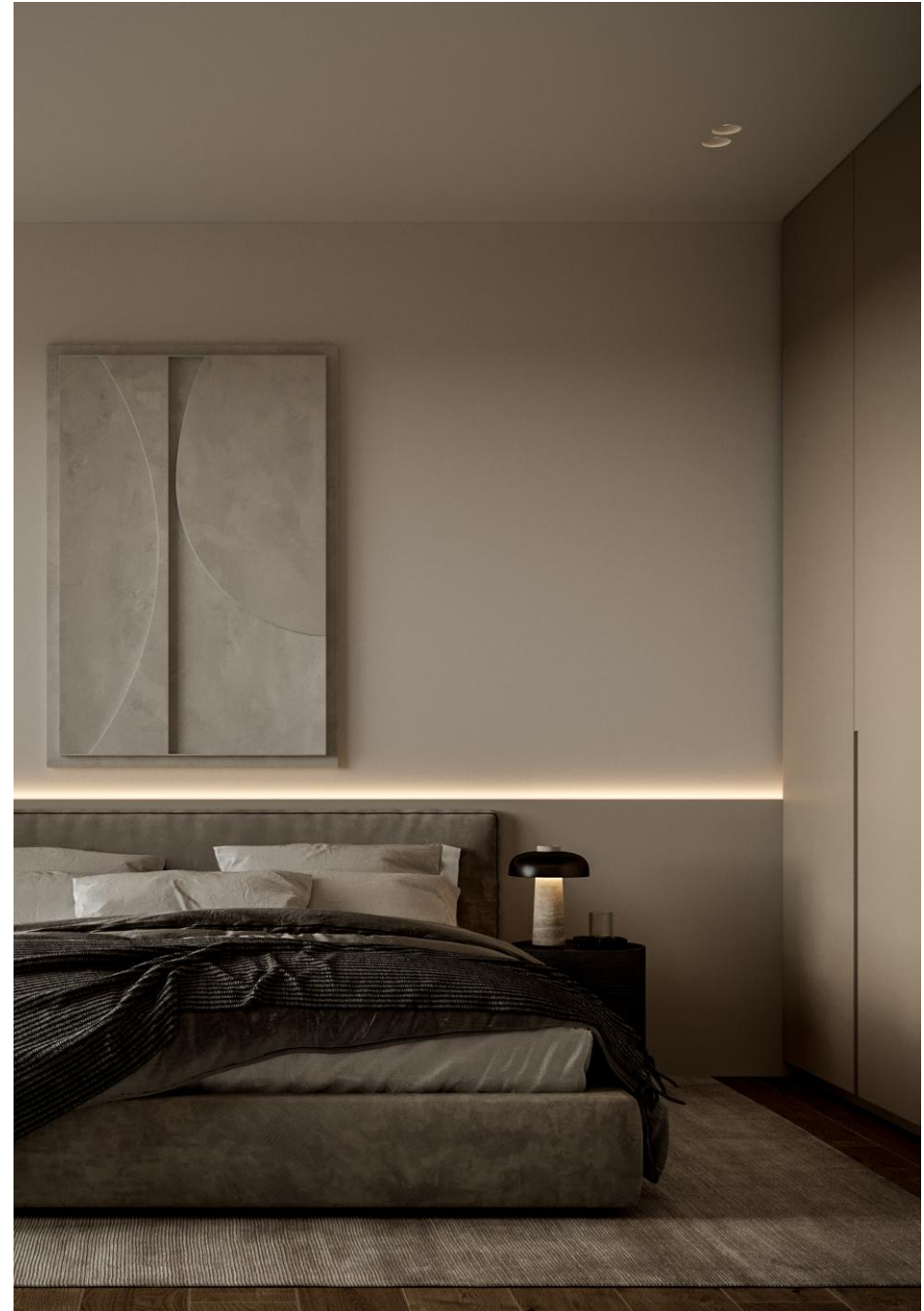
LOCATION



THE DESIGN

THE DETAILS
ARE NOT
THE
DETAILS.
THEY MAKE
THE DESIGN.

All the villas have ample, comfortable interior spaces and spacious balconies. European ceramic tiles in bathrooms and living areas, high-end kitchen cabinets and wardrobes are part of the extensive list of features the development offers.





DEVELOPMENT HIGHLIGHTS

Marble dressed façade walls.

Entrance steps with hidden lighting.

Modern self-standing letter box with house number.

Marble stairs with glass railings.

High-standard kitchen cabinets and wardrobes.

High-quality European ceramic flooring (120cm x 60cm).

High-standard sanitary ware from top European brands.

Energy Class A with thermal aluminum window frames with double-glazing.

Photovoltaic system of 3KW per villa.

Security entrance doors and intercom system.

Parking area lighting will be controlled by movement sensors.

Provision for electric car charging.

Choice of upgrades offered to the buyers



interliving



interliving



interliving



interliving



interliving



interliving



interliving



interliving



interliving



interliving



interliving



interliving



interliving



interliving



interliving

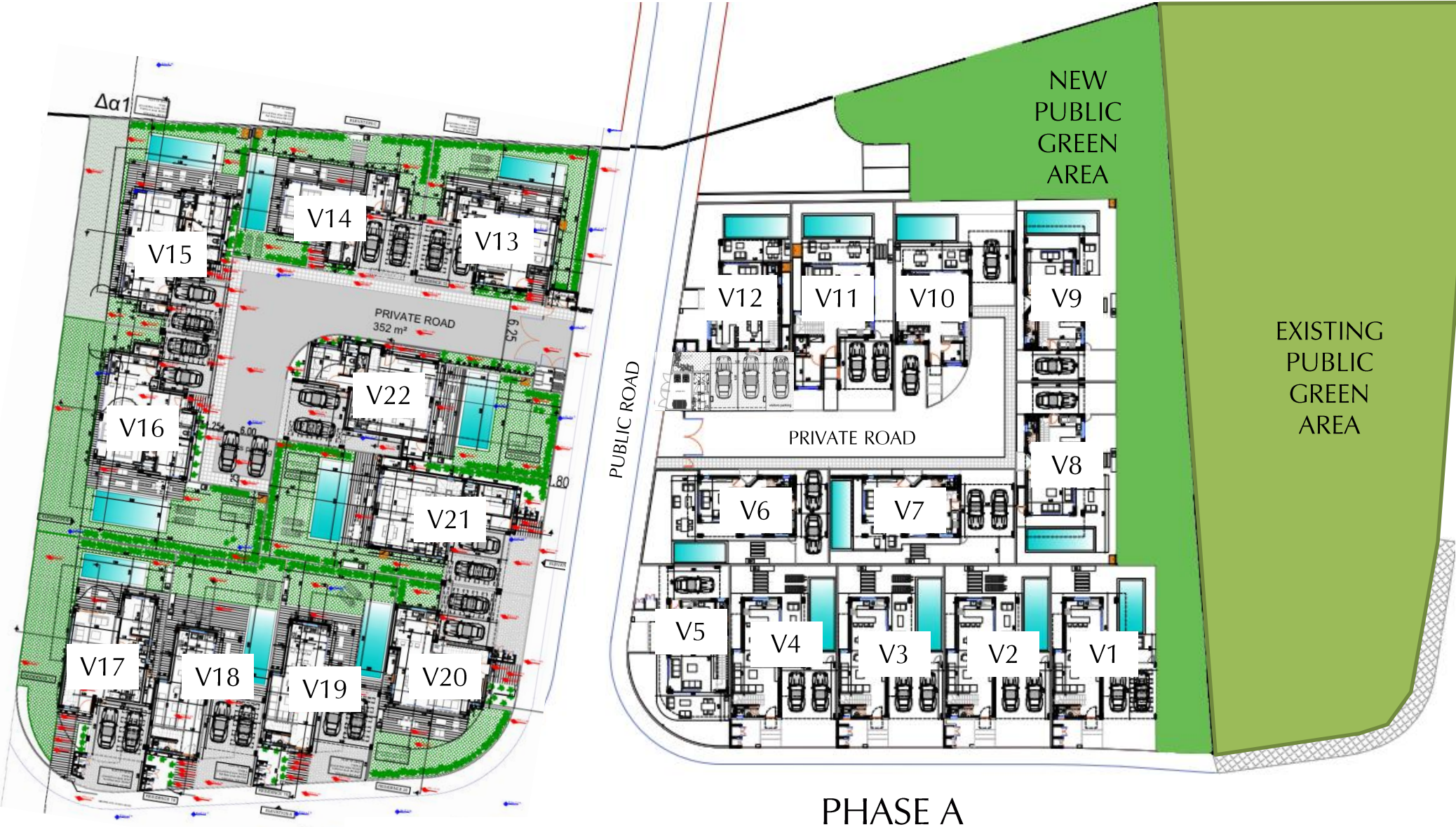


interliving



interliving

MASTERPLAN



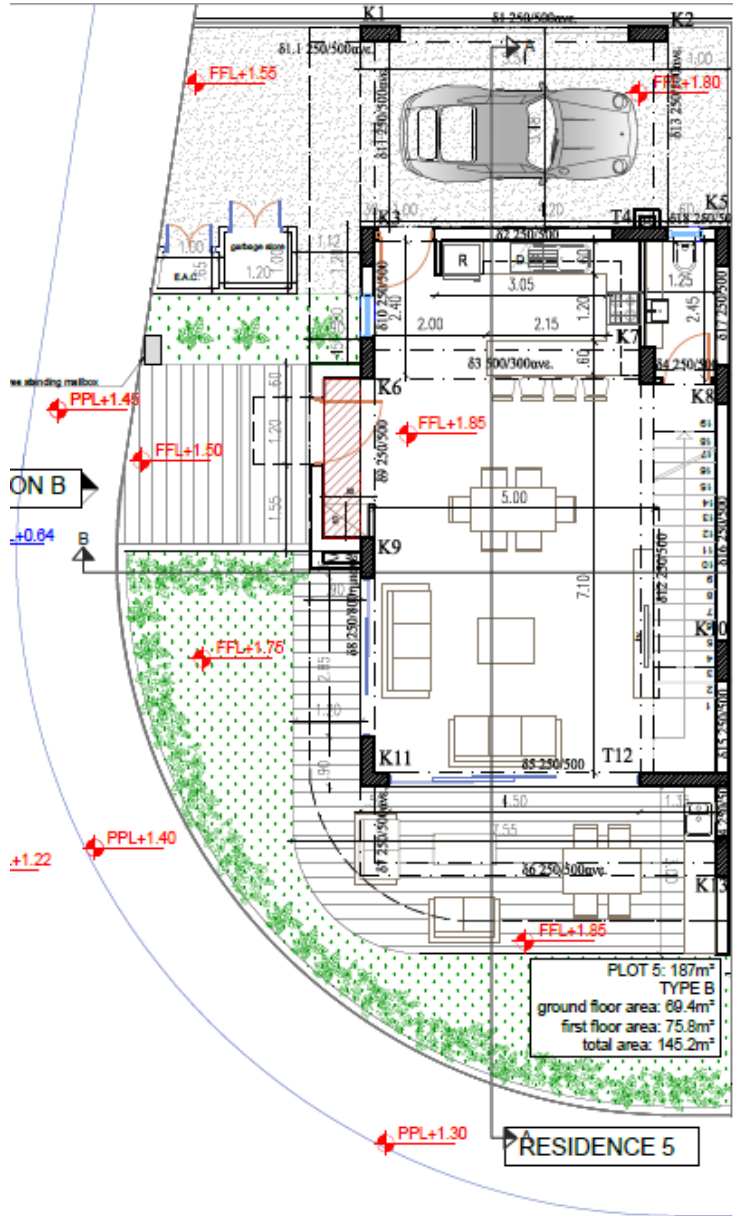
PHASE B

PHASE A

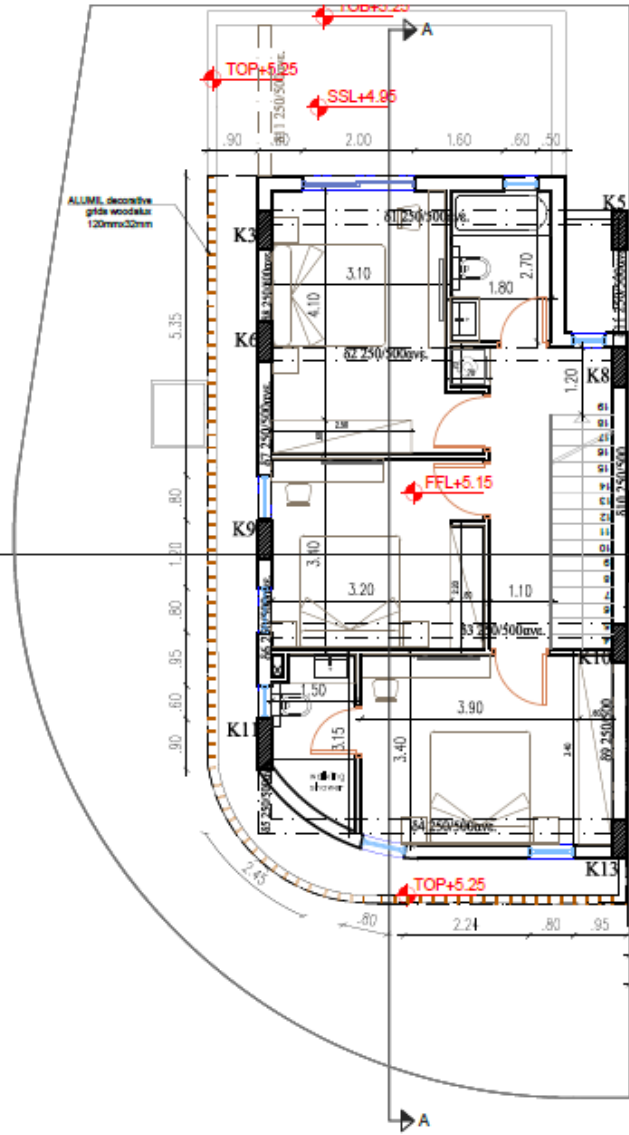
| UNIT | TYPE | PLOT SIZE SQM | INTERNAL SQM | COVERED VER. SQM | TOTAL COVERED SQM | UNCOVERED VER. SQM | COVERED PARKING SQM | POOL | ROOF TERRACE |
|------|-----------|---------------|--------------|------------------|-------------------|--------------------|---------------------|----------|--------------|
| V5 | 3 BED | 189 | 145.2 | 21.8 | 167.0 | 13.9 | 23.2 | - | - |
| V6 | 3 BED | 204 | 144.7 | 19.1 | 163.8 | 6.9 | 19.5 | OPTIONAL | OPTIONAL |
| V7 | 3 BED | 210 | 142.7 | 19.1 | 161.8 | 10.9 | 32.9* | OPTIONAL | OPTIONAL |
| V11 | 3 + 1 BED | 258 | 192.1 | 19.0 | 211.1 | 16.6 | 35.0* | OPTIONAL | OPTIONAL |
| V13 | 3 BED | 272 | 151.7 | 18.4 | 170.1 | 11.7 | 17.4* | OPTIONAL | OPTIONAL |
| V14 | 3 BED | 267 | 156.1 | 18.5 | 174.6 | 9.6 | 18.3* | OPTIONAL | OPTIONAL |
| V15 | 4 BED | 351 | 188.6 | 14.7 | 203.3 | 28.0 | 18.6* | OPTIONAL | OPTIONAL |
| V16 | 4 BED | 406 | 188.6 | 14.5 | 203.1 | 16.8 | 18.6* | OPTIONAL | OPTIONAL |
| V17 | 4 BED | 337 | 184.8 | 28.8 | 213.6 | 9.1 | 17.9* | OPTIONAL | OPTIONAL |
| V18 | 3 BED | 270 | 155 | 22.9 | 177.9 | 35.7 | 18* | OPTIONAL | OPTIONAL |
| V19 | 3 BED | 260 | 155 | 22.9 | 177.9 | 23.3 | 18* | OPTIONAL | OPTIONAL |
| V20 | 3 BED | 260 | 173.8 | 12.3 | 186.1 | 17.4 | 17.5* | - | OPTIONAL |
| V21 | 4 BED | 319 | 194.7 | 16.2 | 210.9 | 28.7 | 21.6* | OPTIONAL | OPTIONAL |
| V22 | 4 BED | 339 | 182.2 | 14.5 | 196.7 | 22.3 | 24.6* | OPTIONAL | OPTIONAL |

* Double Side By Side parking

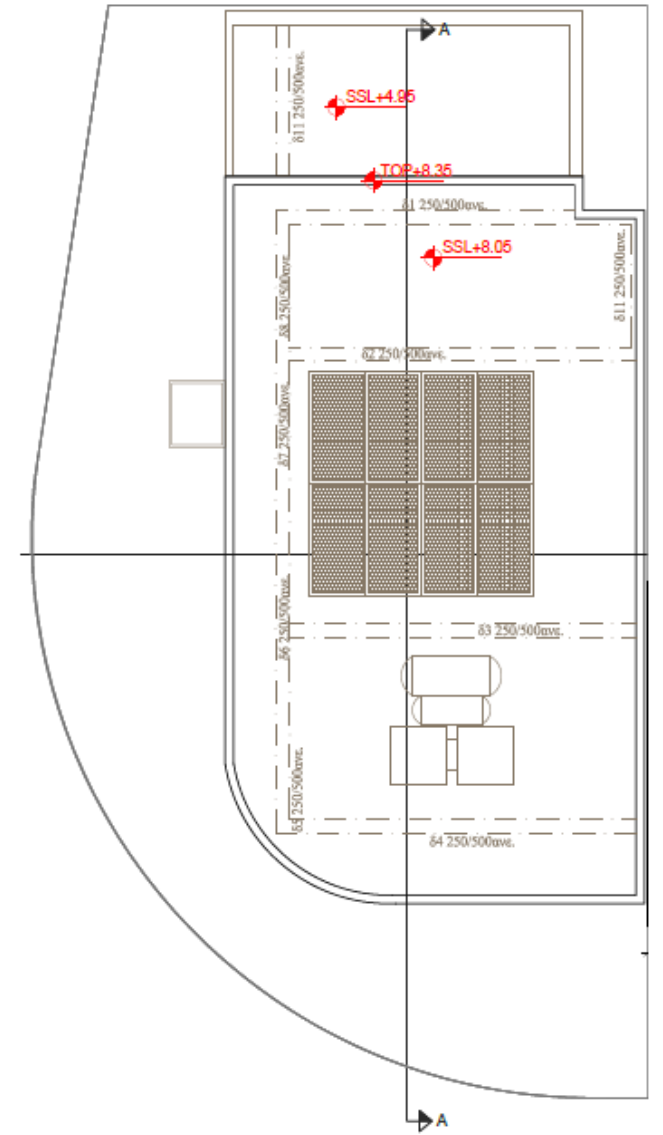
FLOORPLANS – V05



Ground floor



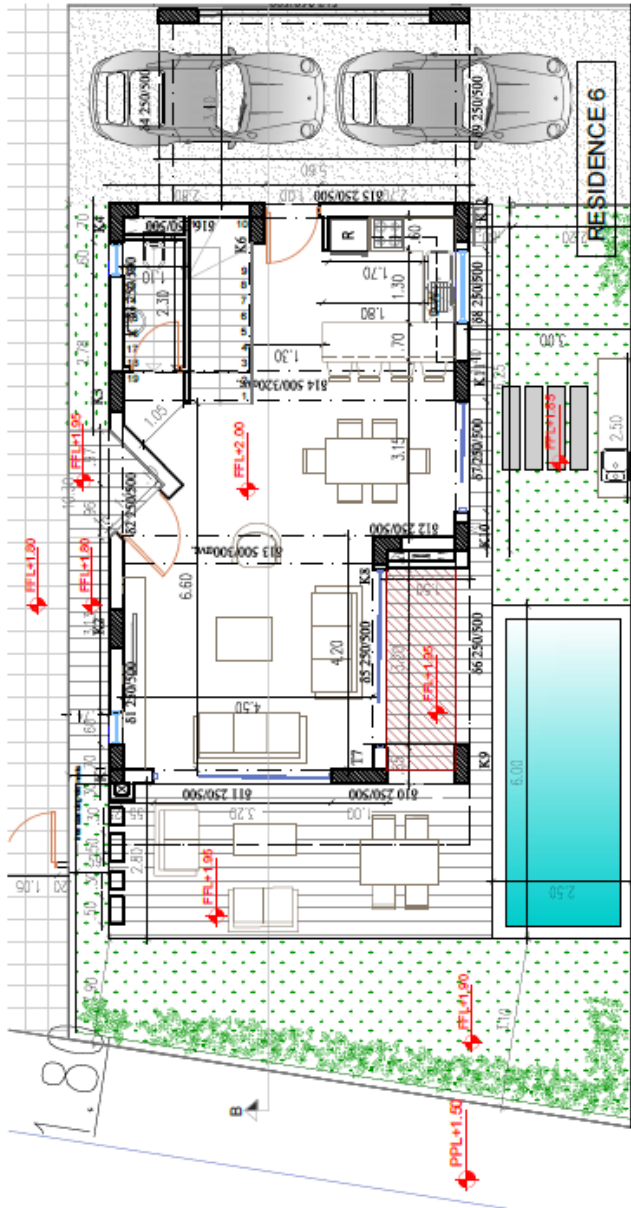
First floor



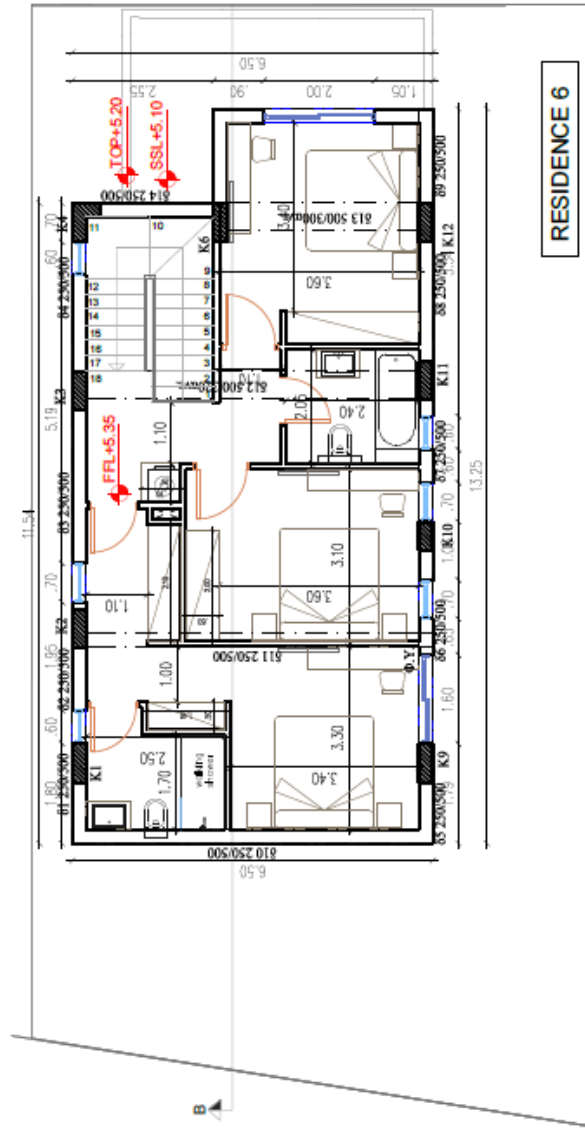
Roof

interliving

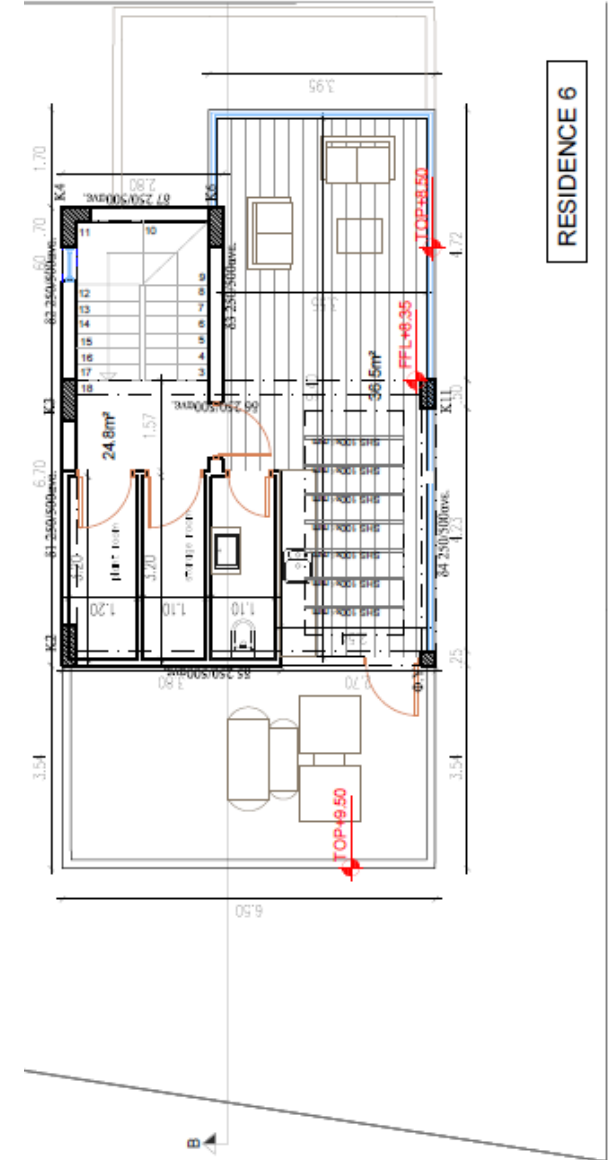
FLOORPLANS – V06



Ground floor



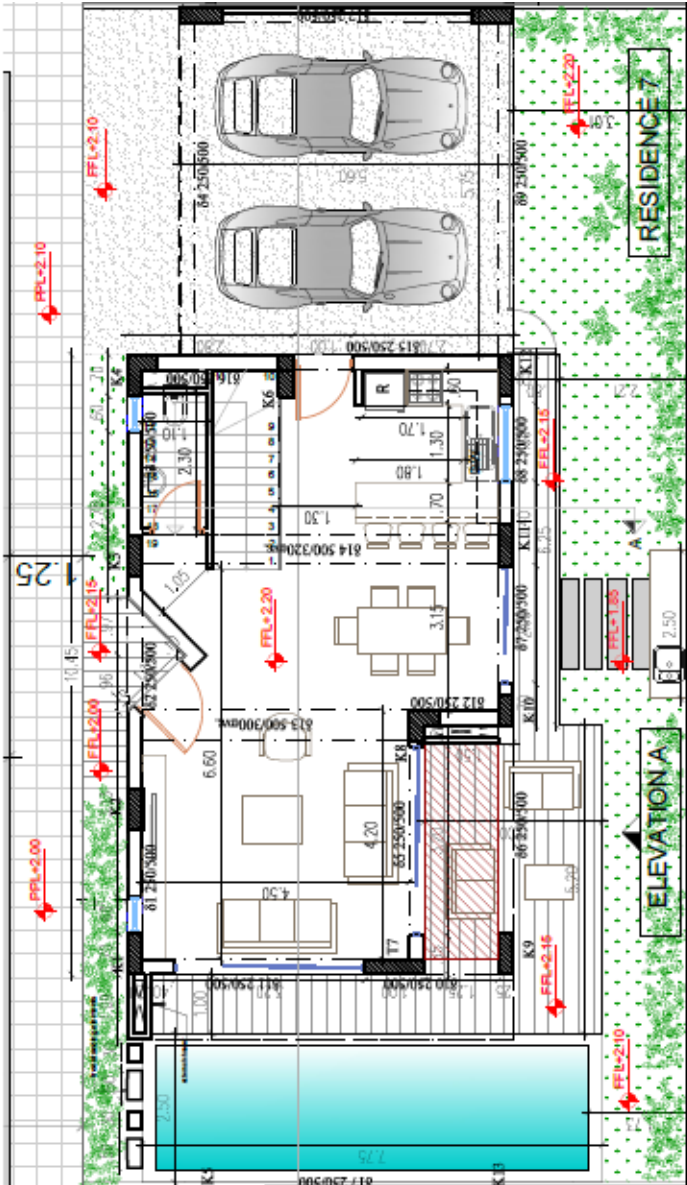
First floor



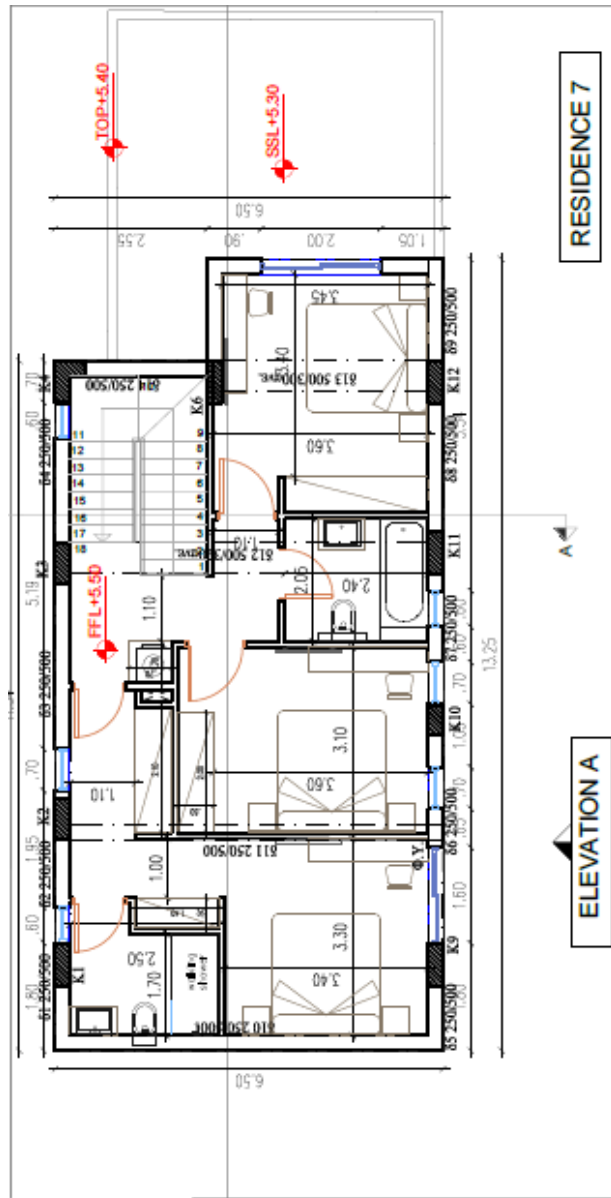
Roof garden

interliving

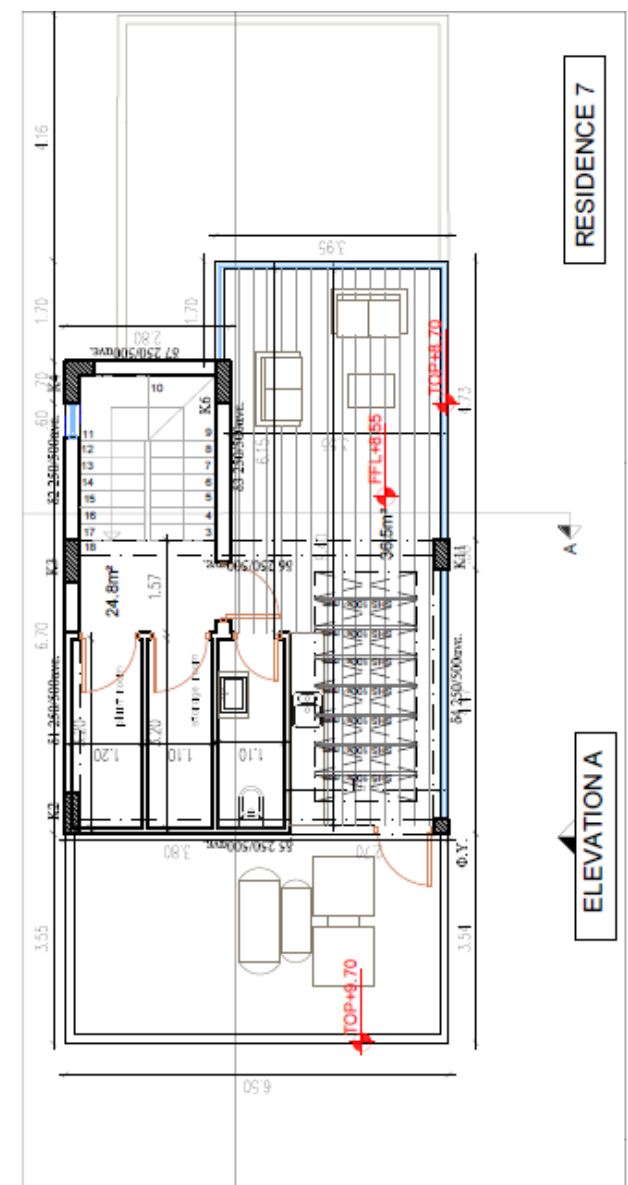
FLOORPLANS – V07



Ground floor

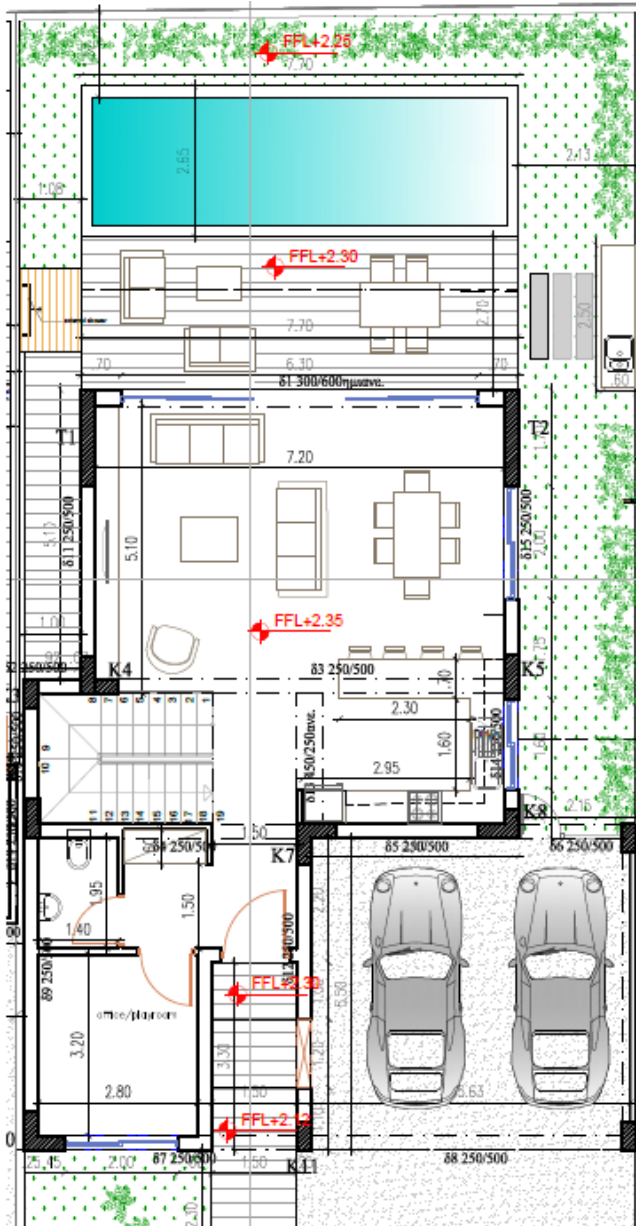


First floor

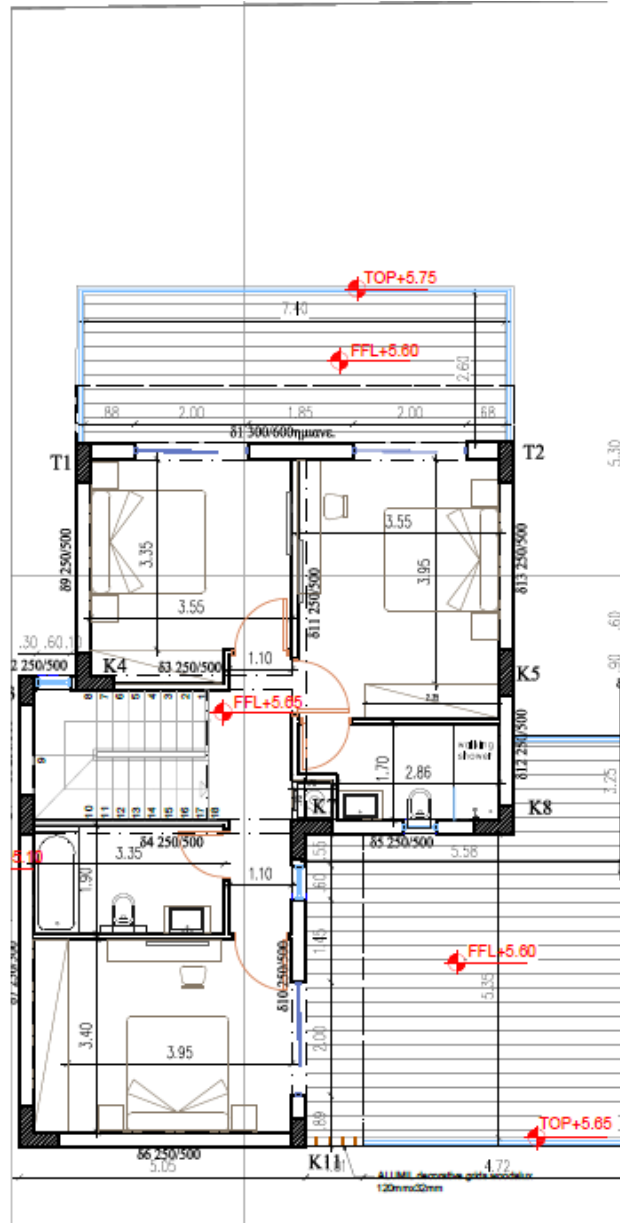


Roof garden

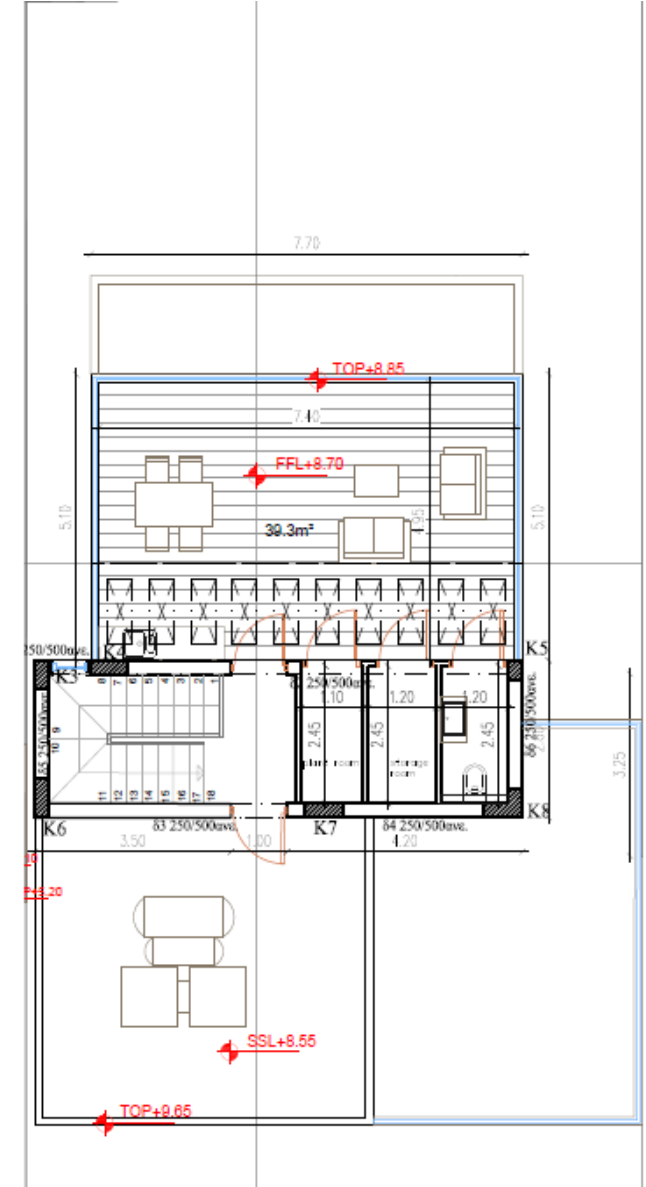
FLOORPLANS – V11



Ground floor



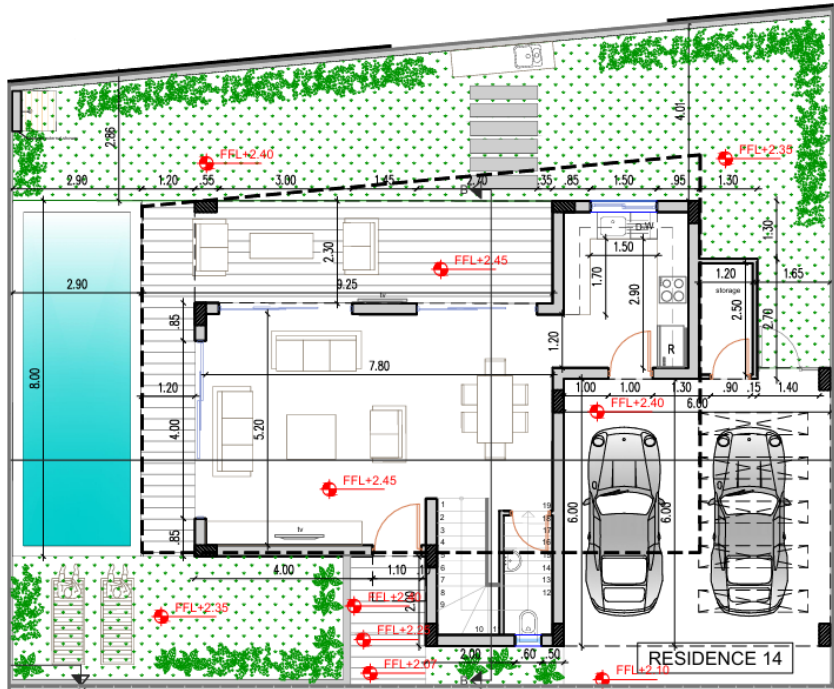
First floor



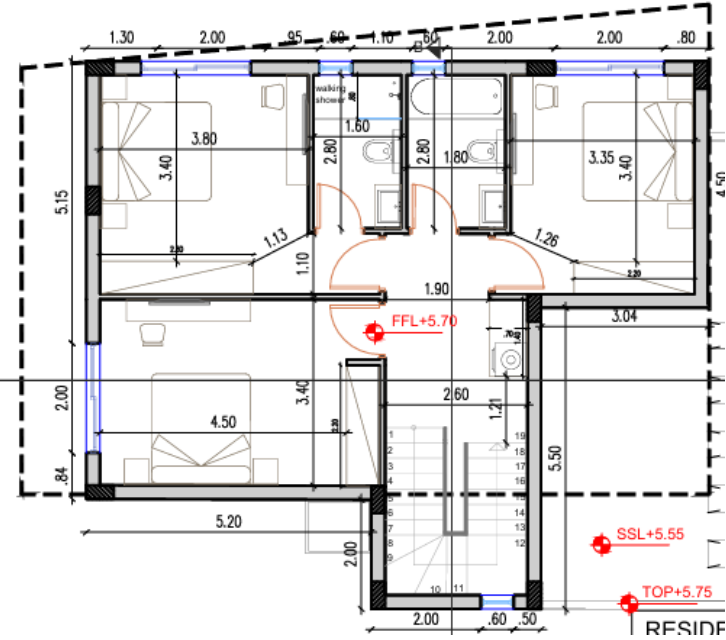
Roof garden

interliving

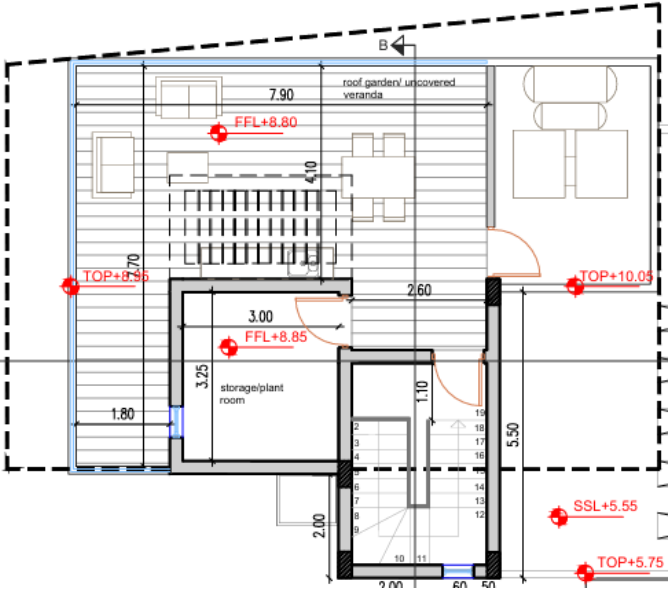
FLOORPLANS – V14



Ground floor



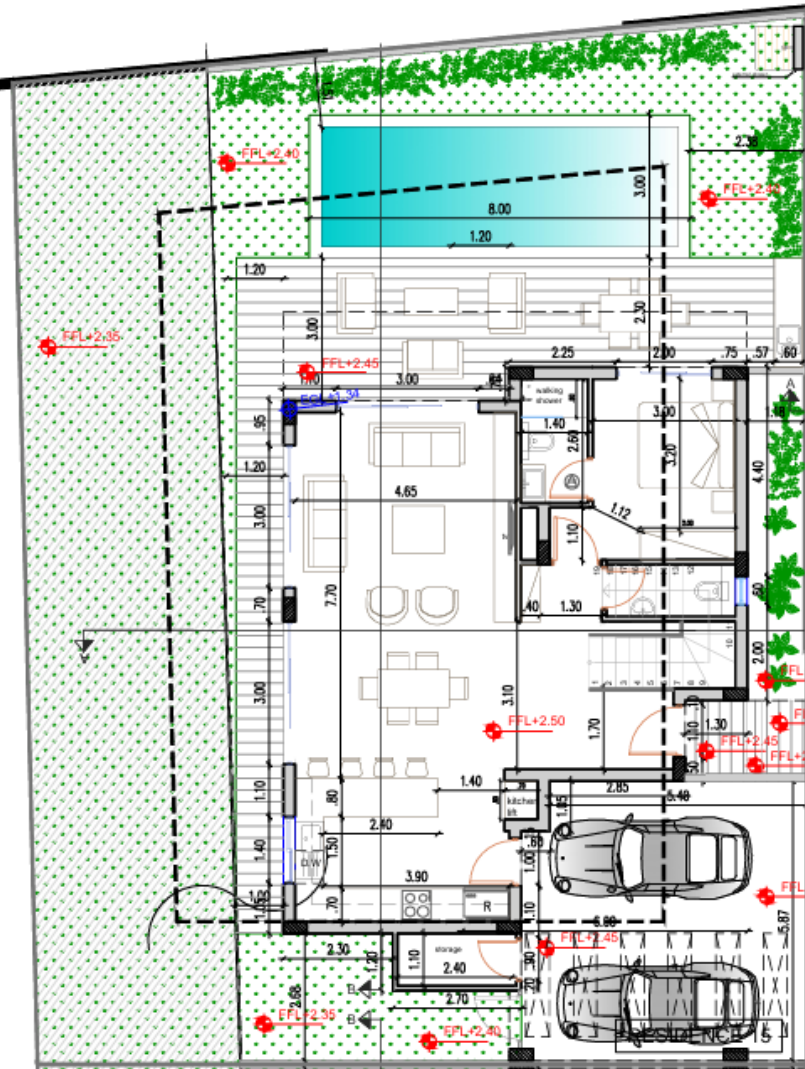
First floor



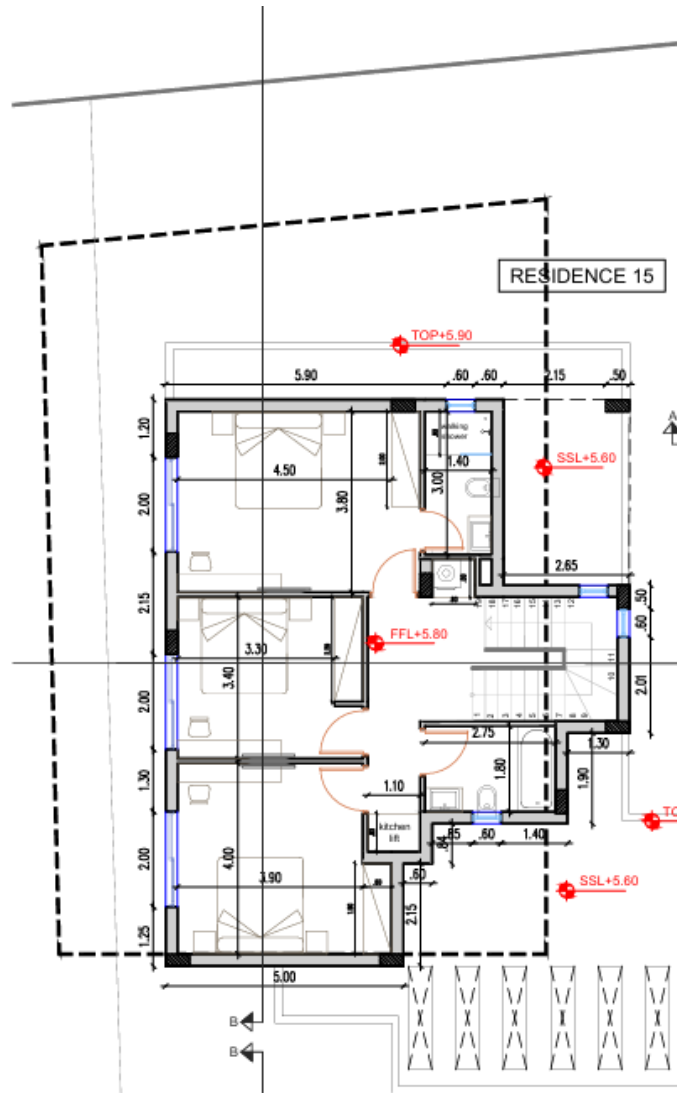
Roof garden

interliving

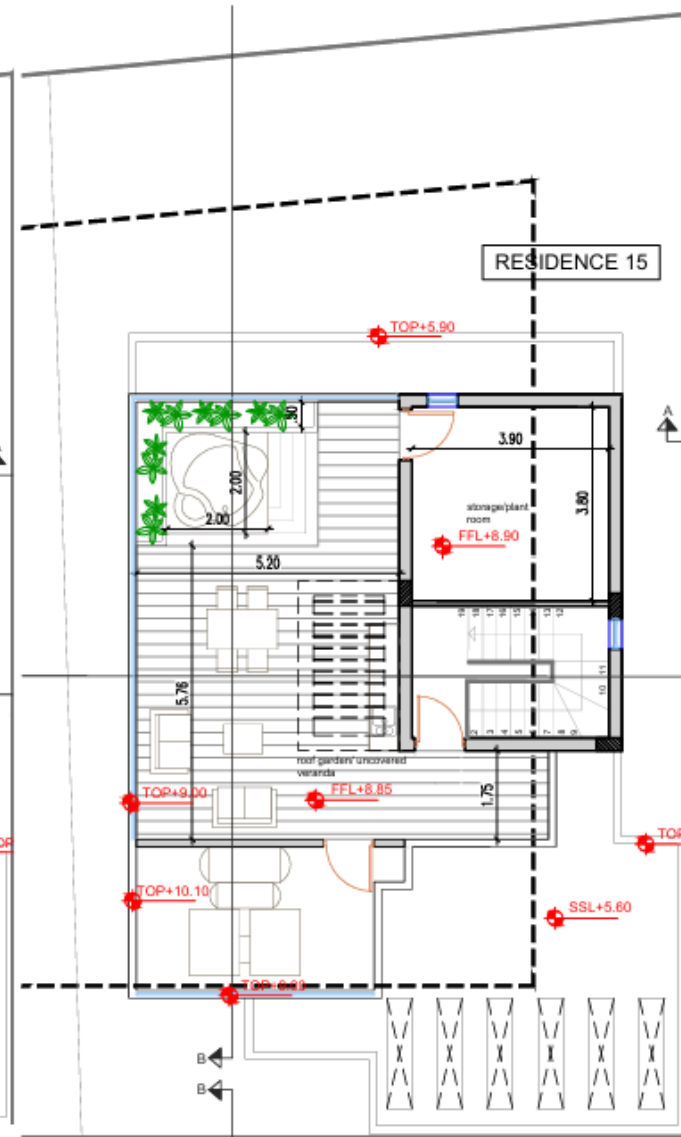
FLOORPLANS – V15



Ground floor



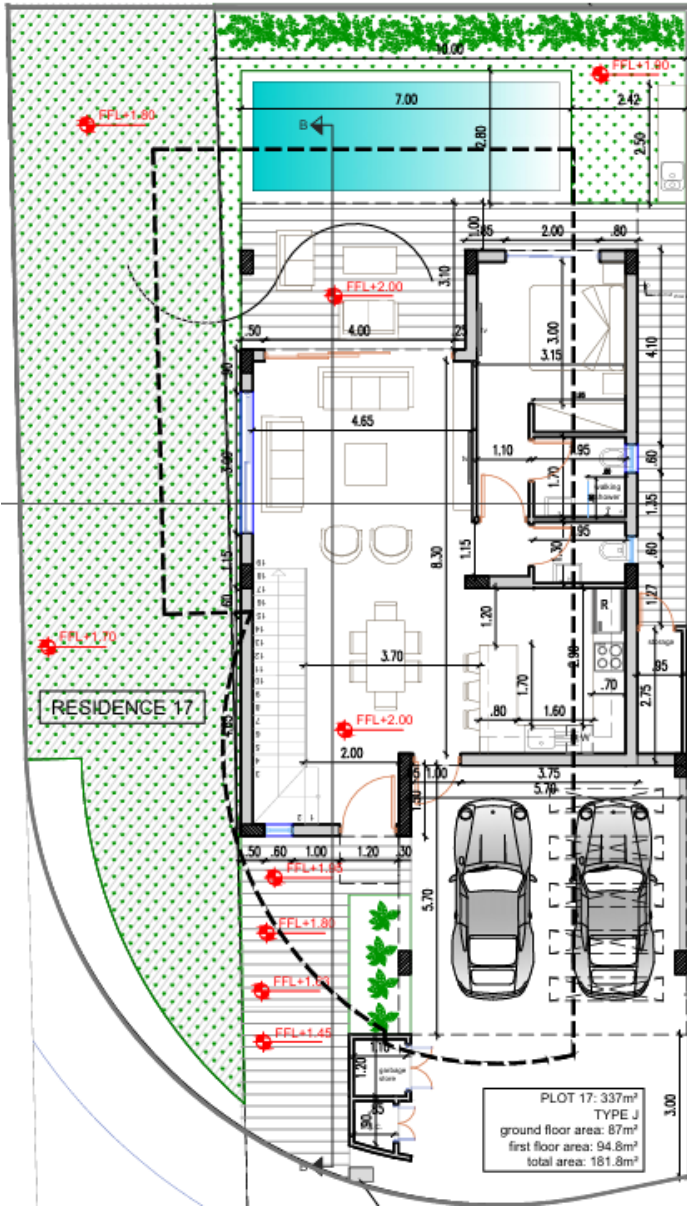
First floor



Roof garden

interliving

FLOORPLANS – V17



Ground floor



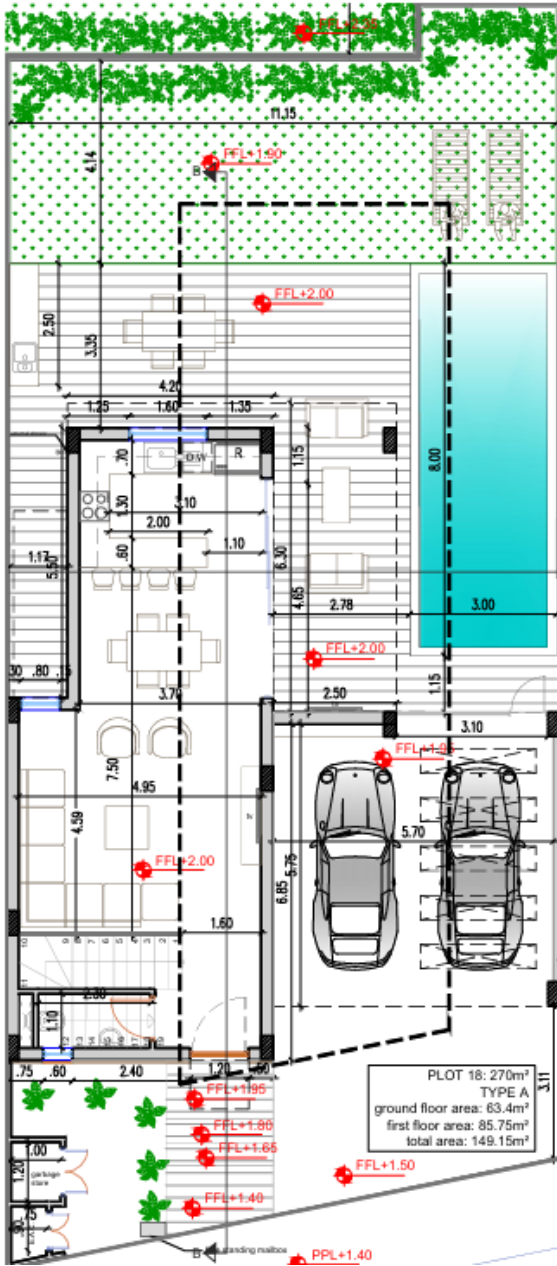
First floor



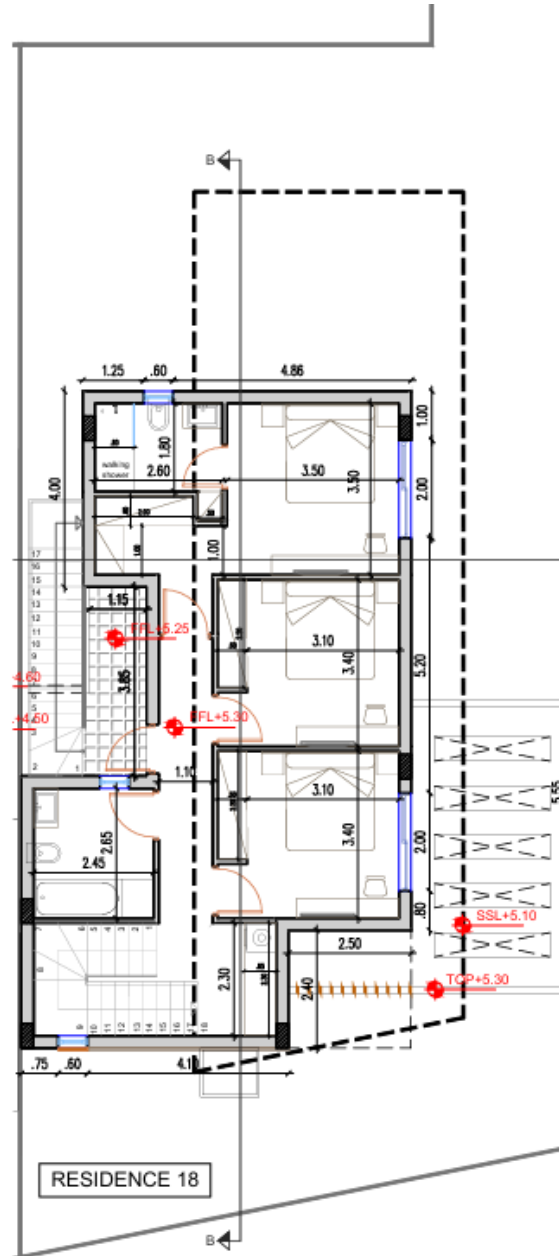
Roof garden

interliving

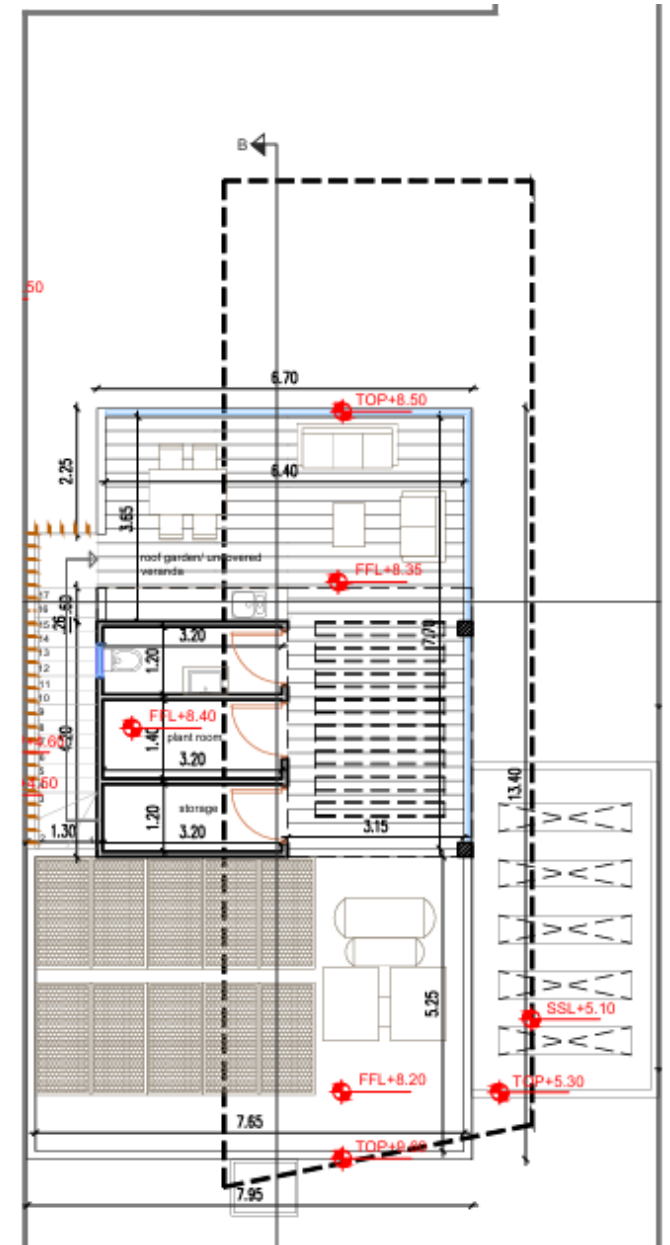
FLOORPLANS – V18



Ground floor



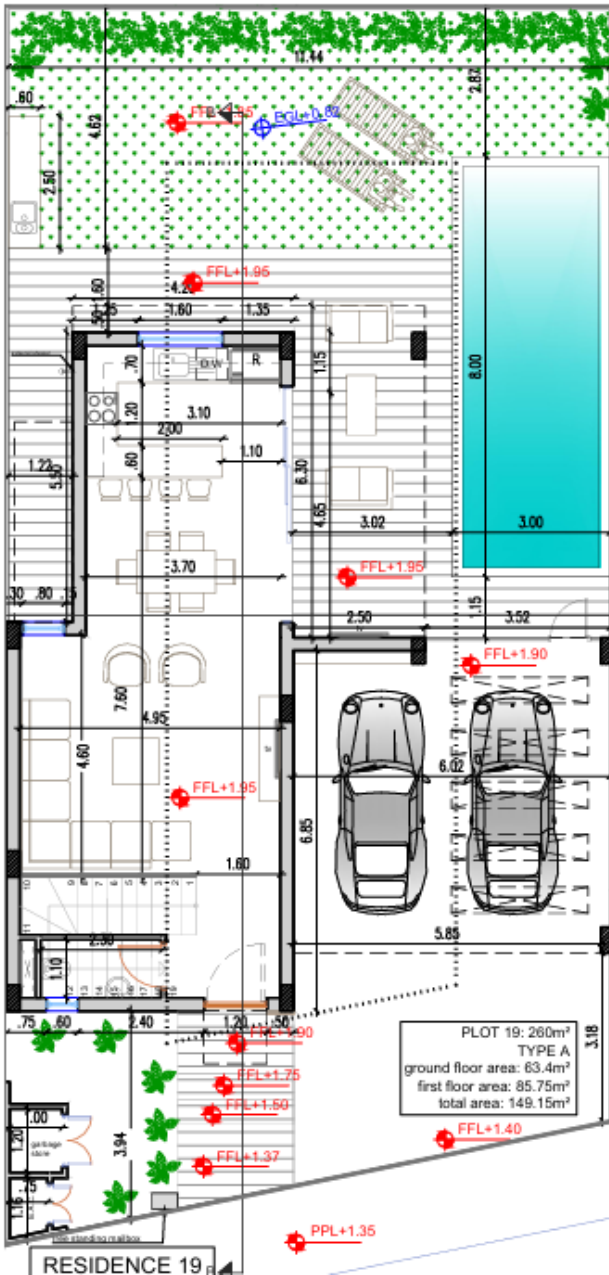
First floor



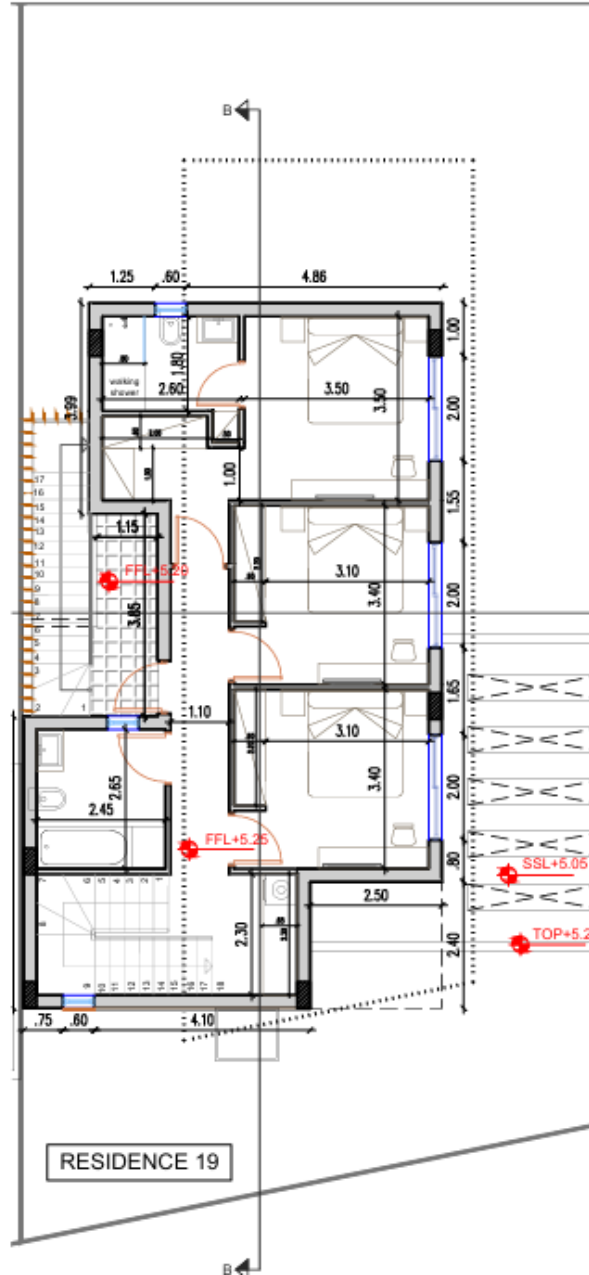
Roof garden

interliving

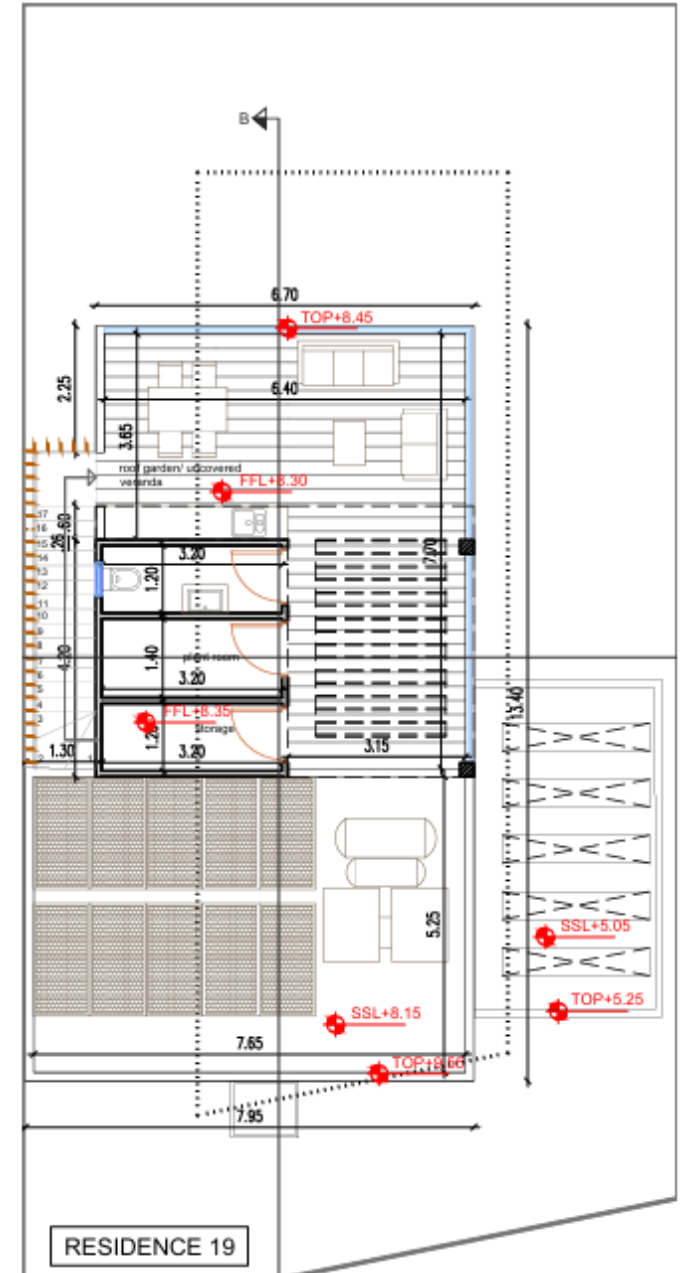
FLOORPLANS – V19



Ground floor

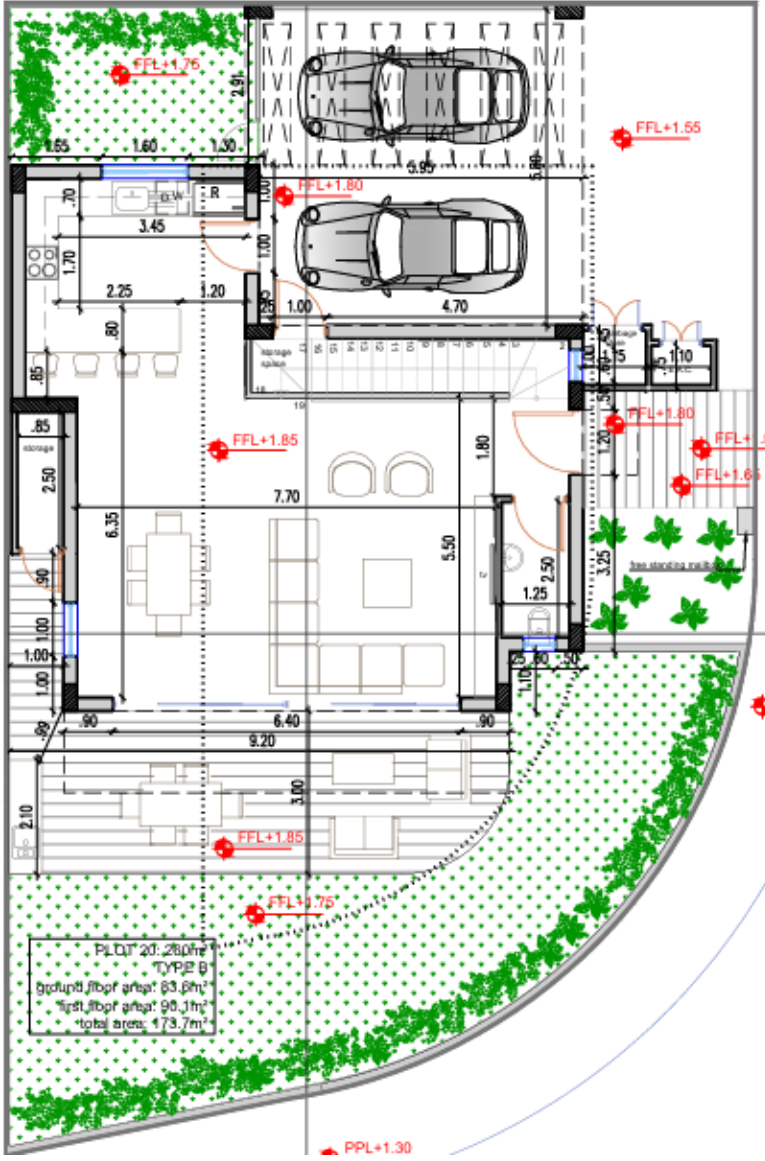


First floor

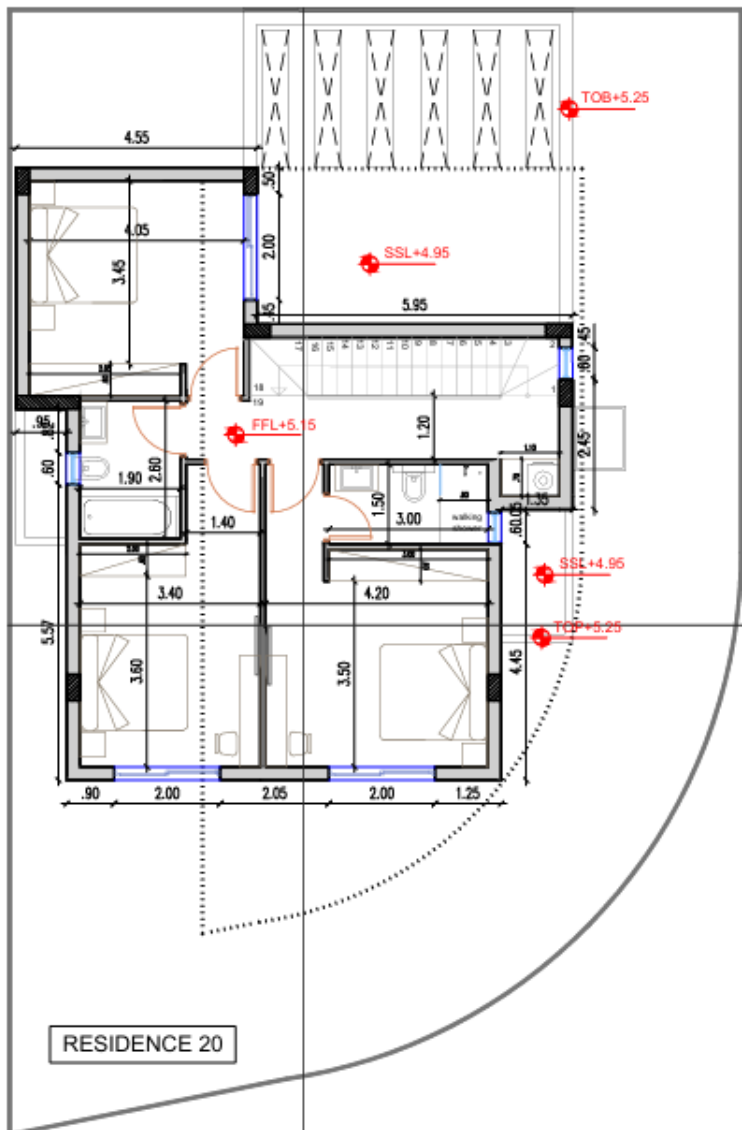


Roof garden

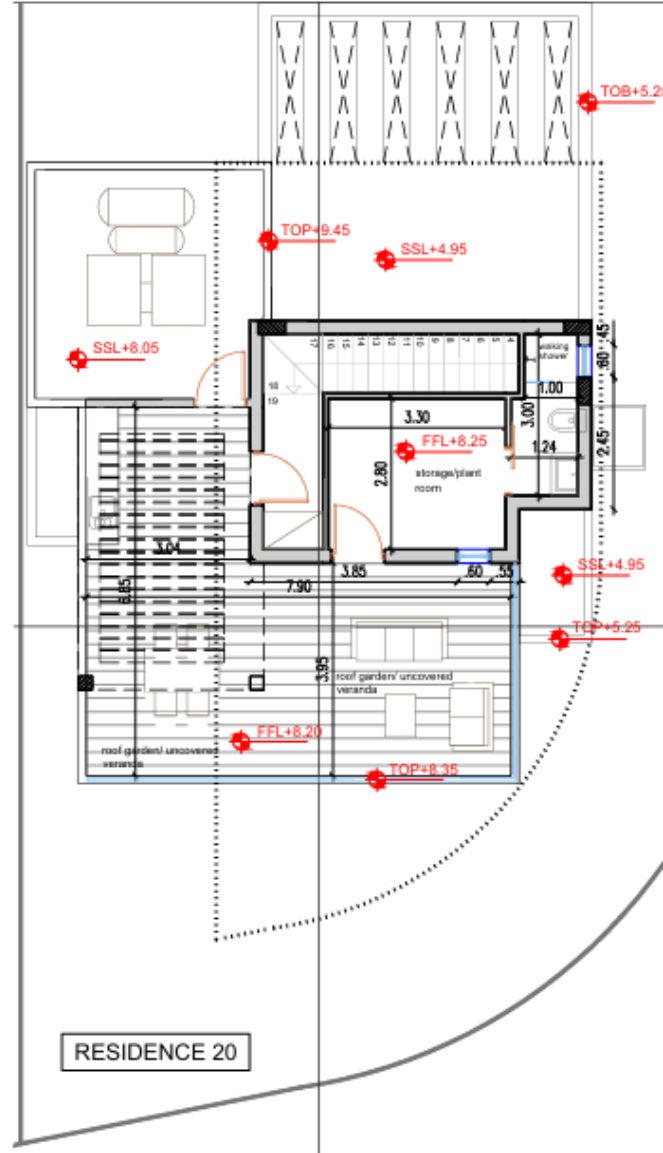
FLOORPLANS – V20



Ground floor

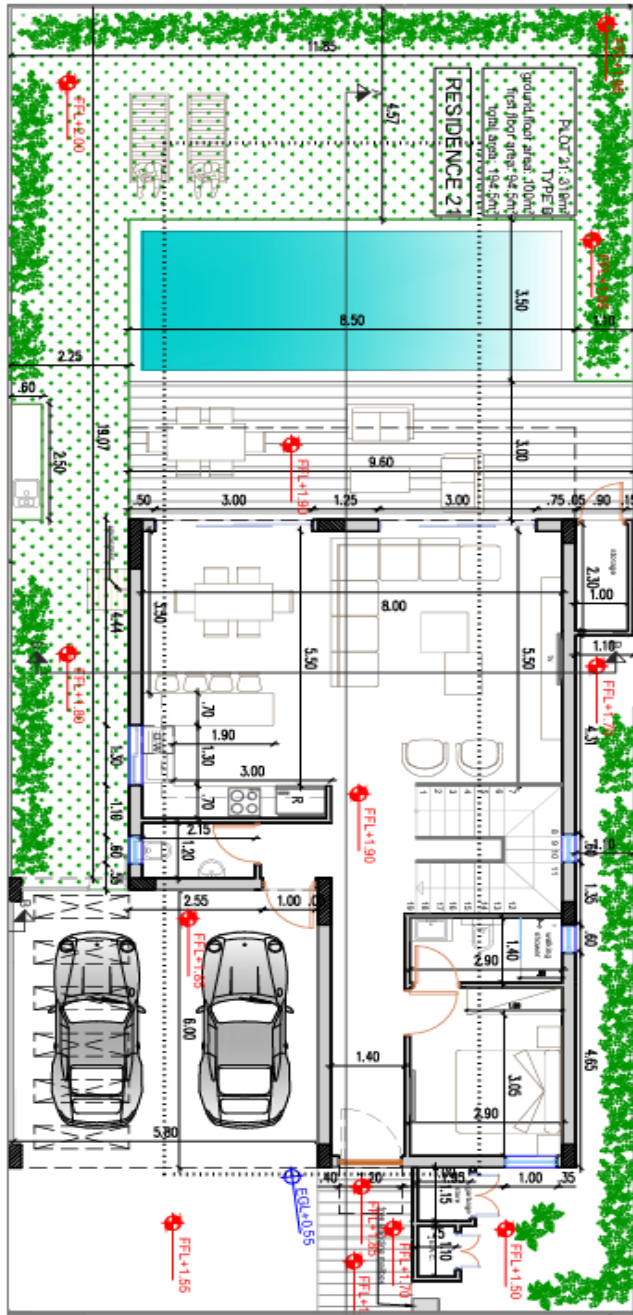


First floor

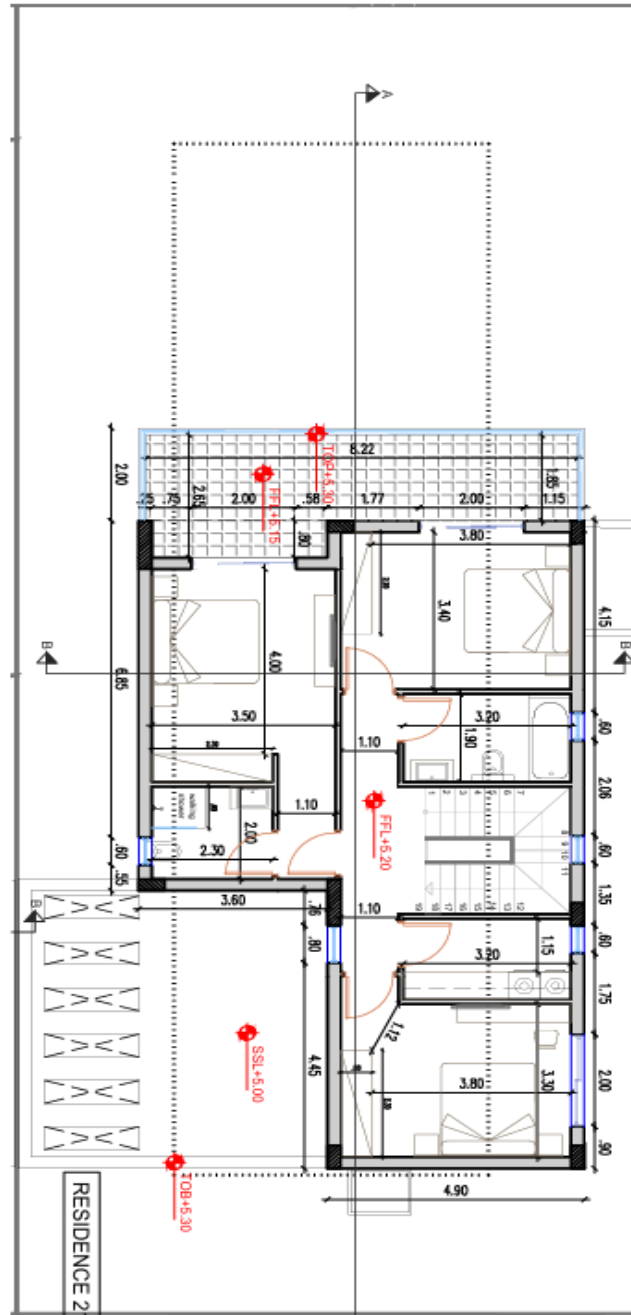


Roof garden

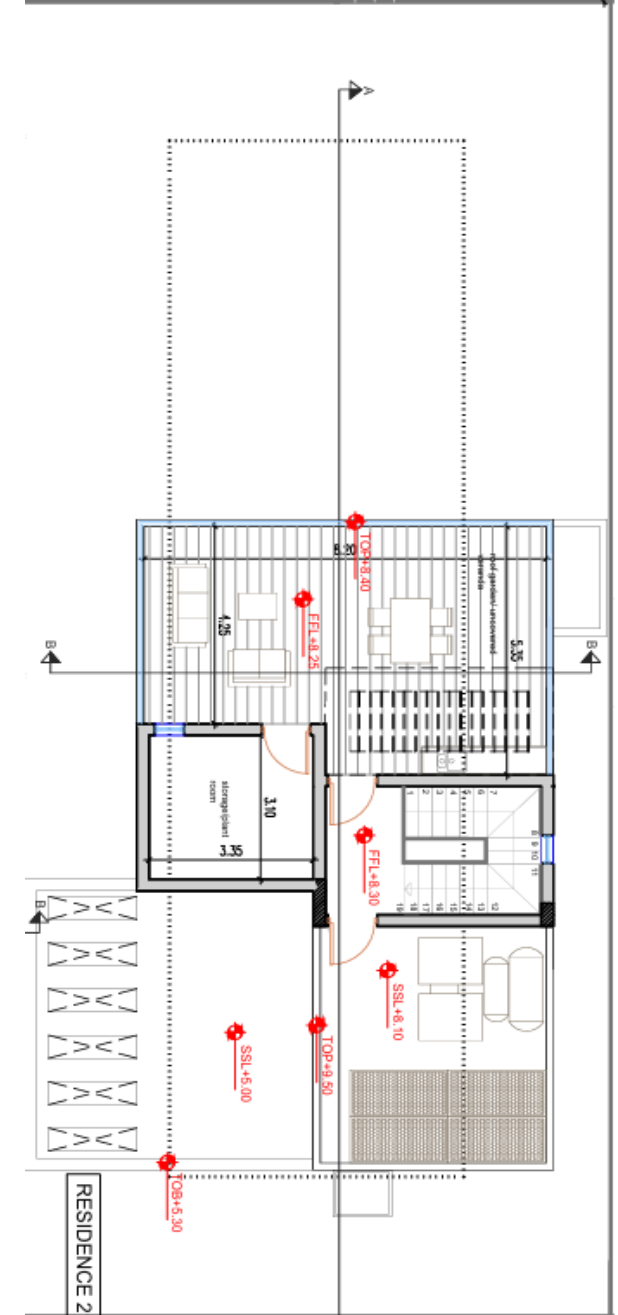
FLOORPLANS – V21



Ground floor



First floor



Roof garden **interliving**



Piliou Street 11-13, 7th Floor,
Office 701, 6037 Larnaca, Cyprus
70009080

sales@interlivinggroup.com

interliving

interlivinggroup.com