

RIVA



MODERN
LIVING
BY THE SEA

A project by

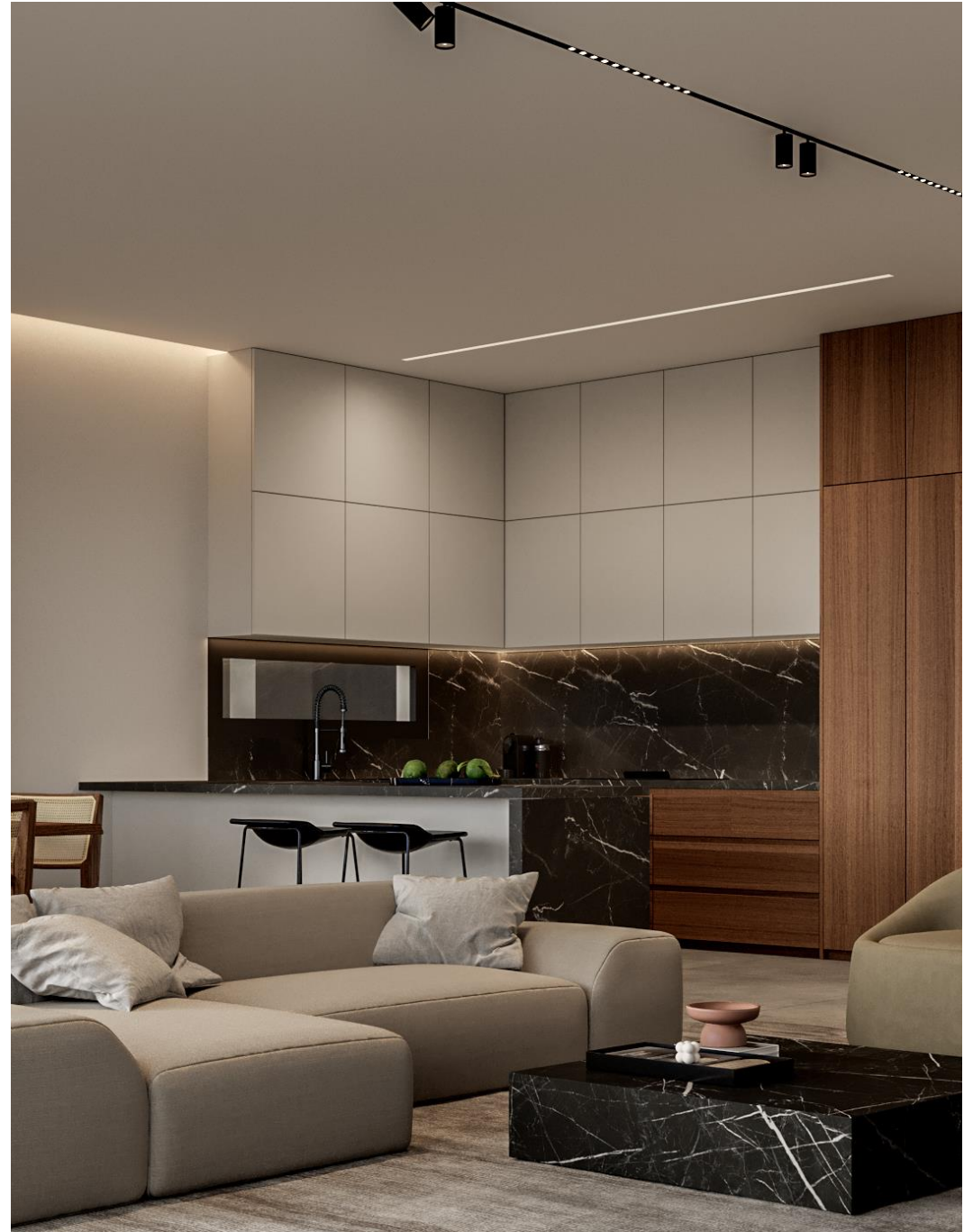
interliving



RIVA

MADE FOR LIVING

We are a Cyprus-based boutique company aiming to design and develop properties which surpass expectations with the sole purpose of giving people the choice of better living and better investment.





WHAT INSPIRES US

A home is more than just an investment, it's a long-lasting connection to a community offering a sense of place. We draw inspiration from this maxim to bring together knowledge and craftsmanship to design, develop and

build a contemporary, sustainable living through innovation in materials and construction methods. Simply put, we are building a futureproof way of living!

WE ARE BUILDING A FUTUREPROOF WAY OF LIVING



IT'S A UNIQUE METHOD

We are meticulous, we do our research, and we exhaust the options. We choose our partners wisely and we create spaces where each detail has been accounted for resulting in a successful, perfectly balanced amalgamation of aesthetics and functionality. These are the Interliving properties.



WHO WE ARE

Interliving was founded as an alternative to the rigid and inflexible property development industry in Cyprus.

With international experience and background in property management, development, finance and sales, Interliving has set out to offer a better experience for those looking for their forever home or a sound financial investment in a crowded market.

LARNACA



The coastal city of Larnaca is one of the world's 20 most ancient continuously inhabited areas. It is the gateway to Cyprus and a blend of old and new.

From its traditional architecture, authentic taverns and local handicrafts to its cultural sites and religious monuments, old Larnaca is an evocative glimpse into a Cyprus past.

New and modern Larnaca harmoniously intertwines with these elements of ancient Kition, and offers the cosmopolitan visitor beautiful sandy beaches, a bustling promenade, shopping, advanced infrastructure and plenty amenities.

With almost guaranteed sunshine every day, Larnaca is an exciting all year round destination which offers cultural events, numerous attractions, activities and leisure options at close proximity.

Larnaca is a place where "They Always Come Back", not only because its favourite winter guests, the flamingos, which they visit the area's lakes in flocks each year, but also the visitors of Larnaca who keep returning year after year.

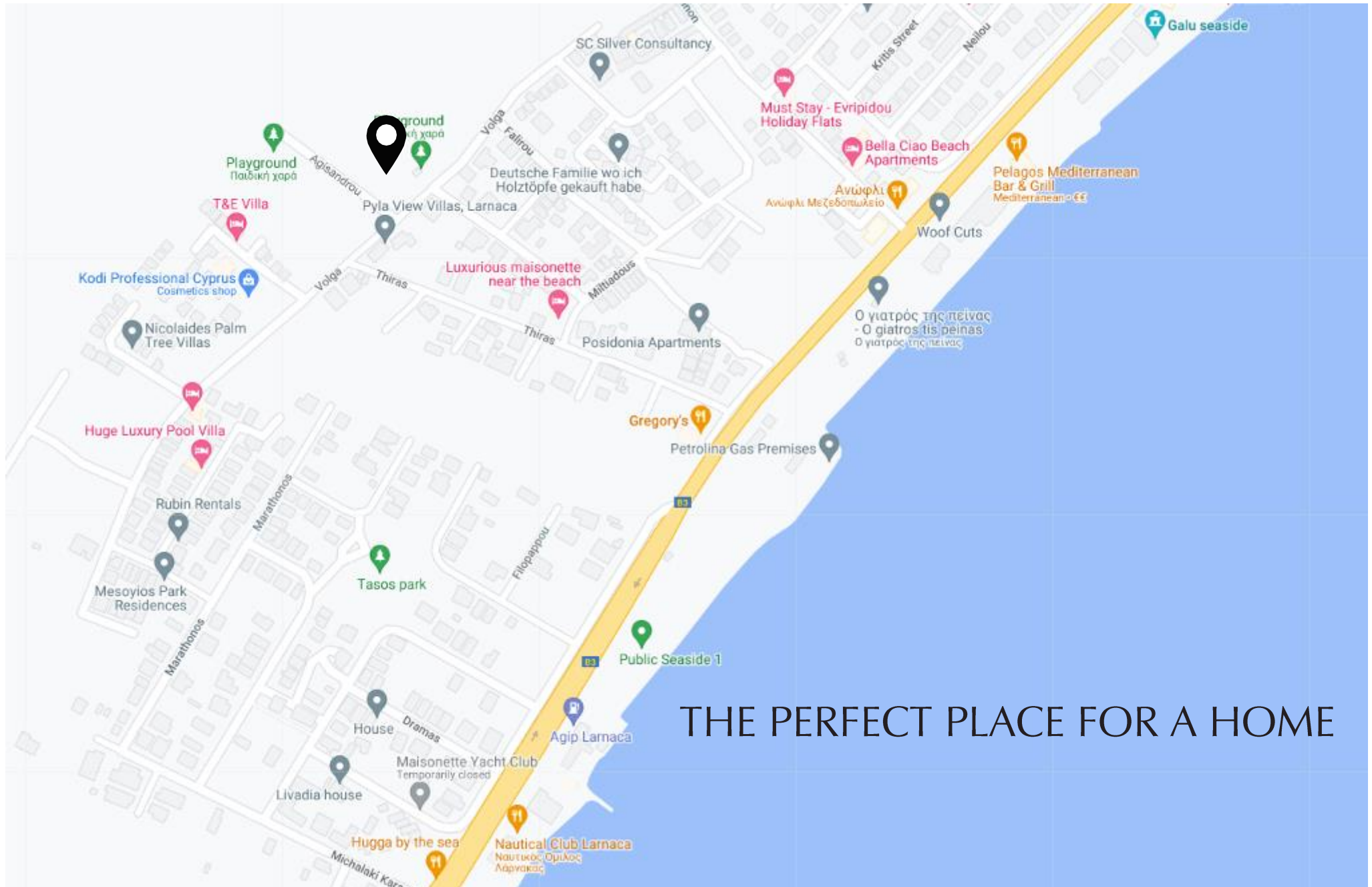
– RIVA

A collection of contemporary three- and four-bedroom villas perfectly designed for modern living just moments from the beach.

With easy access to the best shopping, dining, and entertainment that Larnaca has to offer, Riva Residences is an amazing place to call home.



LOCATION



THE PERFECT PLACE FOR A HOME

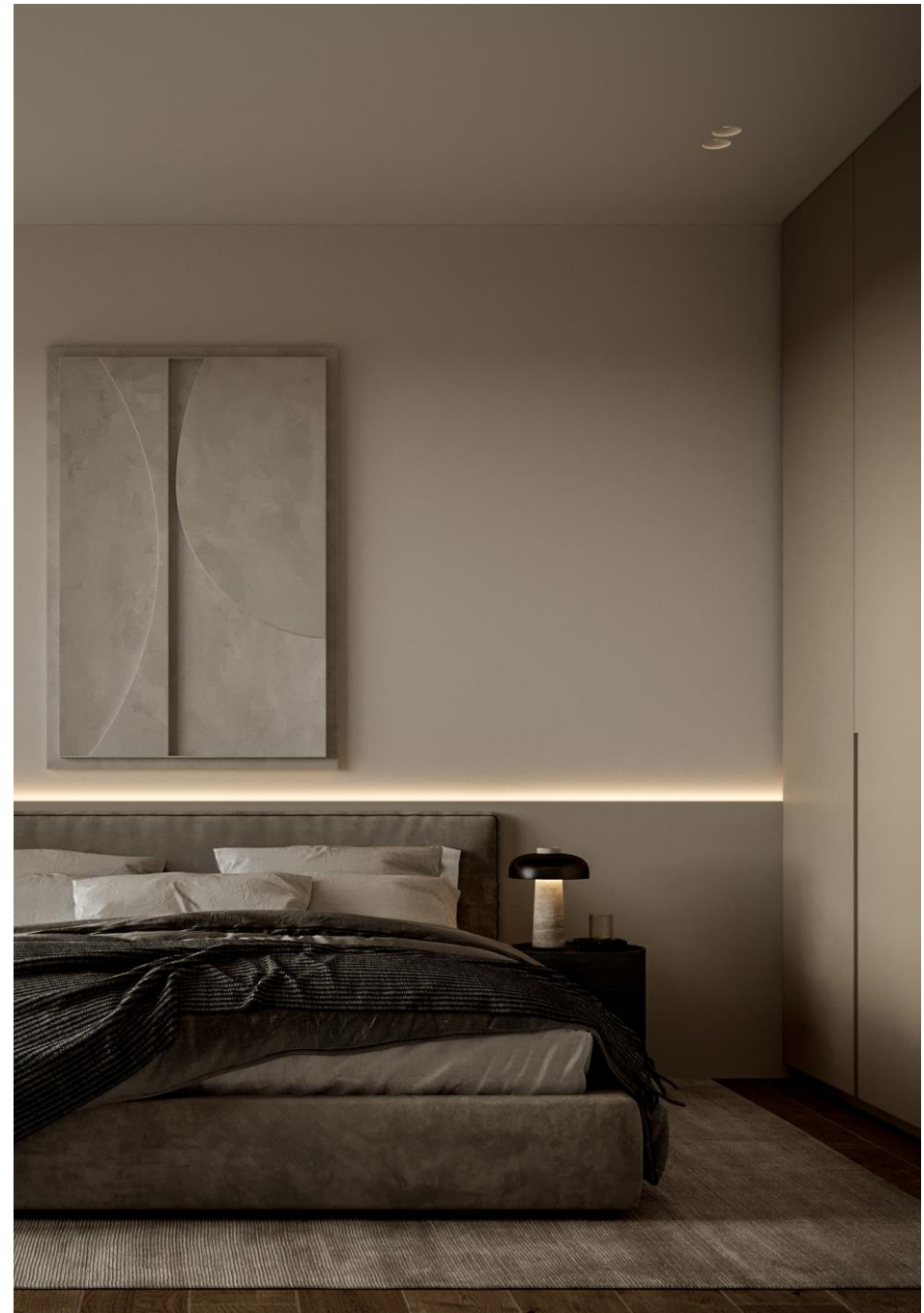
LOCATION



THE DESIGN

THE DETAILS
ARE NOT
THE
DETAILS.
THEY MAKE
THE DESIGN.

All the villas have ample, comfortable interior spaces and spacious balconies. European ceramic tiles in bathrooms and living areas, high-end kitchen cabinets and wardrobes are part of the extensive list of features the development offers.





DEVELOPMENT HIGHLIGHTS

Energy Class A with installed photovoltaic system

High-quality European ceramic flooring (120cm x 60cm)

Thermal aluminum window frames with double-glazing

High-quality European ceramic tiles in bathrooms

Security entrance doors and intercom system

High-standard sanitary ware from top European brands

High-standard kitchen cabinets and wardrobes

Choice of upgrades offered to the buyers



interliving



interliving



interliving



interliving



interliving



interliving



interliving



interliving



interliving



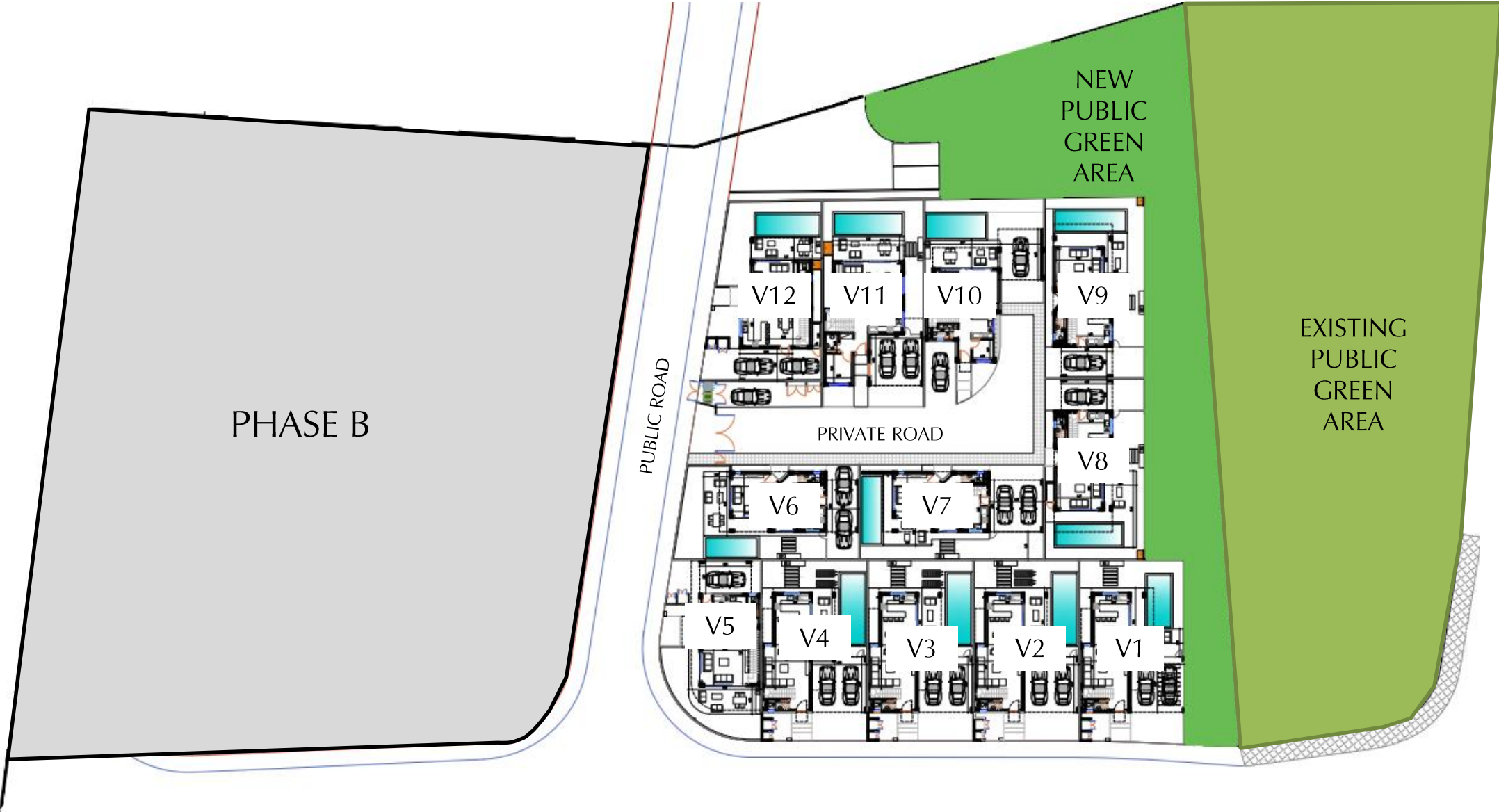
interliving

RIVA – PHASE A

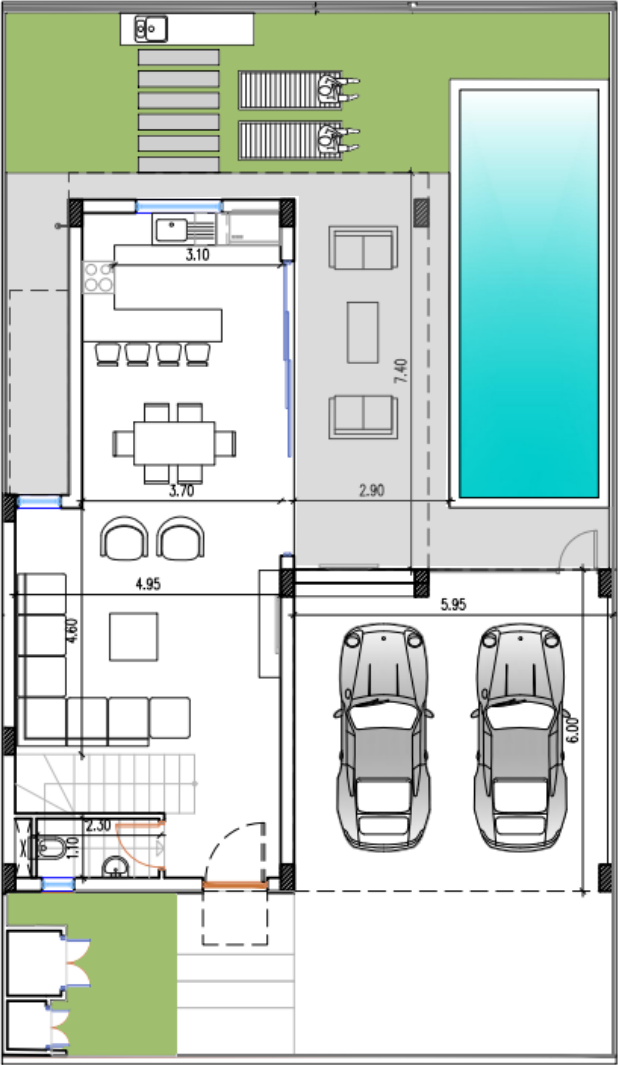
UNIT	TYPE	PLOT SIZE SQM	INTERNAL SQM	COVERED VERANDAS SQM	TOTAL COVERED SQM	UNCOVERED VERANDAS SQM	COVERED PARKING SQM	POOL	ROOF TERRACE
V1	3 BED	222	149.2	27.9	177.1	9.0	20.0*	OPTIONAL	OPTIONAL
V2	3 BED	222	149.2	25.1	174.3	5.0	35.0*	OPTIONAL	OPTIONAL
V3	3 BED	222	149.2	25.1	174.3	5.0	35.0*	OPTIONAL	OPTIONAL
V4	3 BED	222	149.2	25.1	174.3	5.0	35.0*	OPTIONAL	OPTIONAL
V5	3 BED	189	145.2	21.8	167.0	13.9	23.2	-	OPTIONAL
V6	3 BED	204	144.7	19.1	163.8	6.9	19.5	OPTIONAL	OPTIONAL
V7	3 BED	210	142.7	19.1	161.8	10.9	32.9*	OPTIONAL	OPTIONAL
V8	3 BED	207	147.8	23.9	171.7	6.3	18.9	OPTIONAL	OPTIONAL
V9	3 BED	209	149.3	26.6	175.9	6.3	18.9	OPTIONAL	OPTIONAL
V10	3 + 1 BED	216	144.7	22.5	167.2	17.8	25.1	OPTIONAL	OPTIONAL
V11	3 + 1 BED	258	192.1	19.0	211.1	16.6	35.0*	OPTIONAL	OPTIONAL
V12	3 BED	236	154.0	15.6	169.6	6.7	23.6	OPTIONAL	OPTIONAL

* Double Side By Side parking

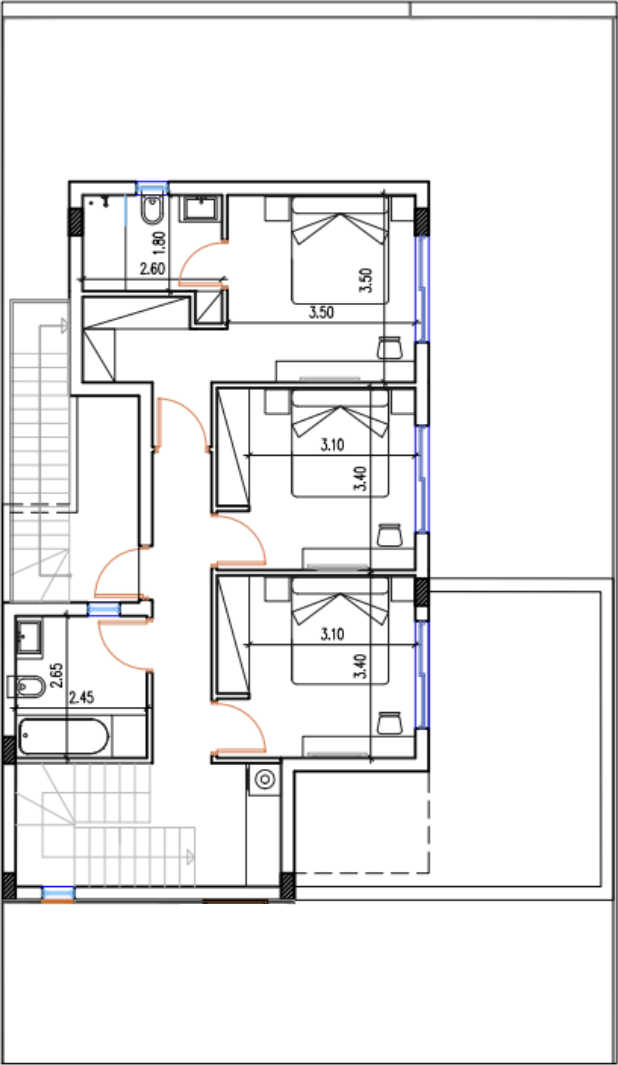
MASTERPLAN



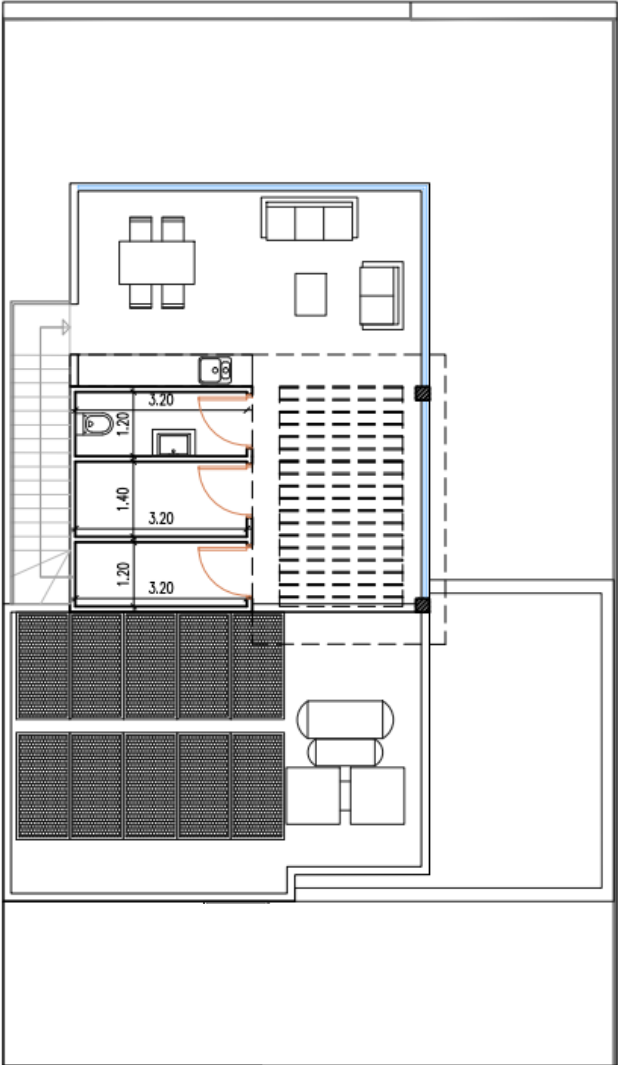
FLOORPLANS – V1, V2, V3 & V4



Ground floor

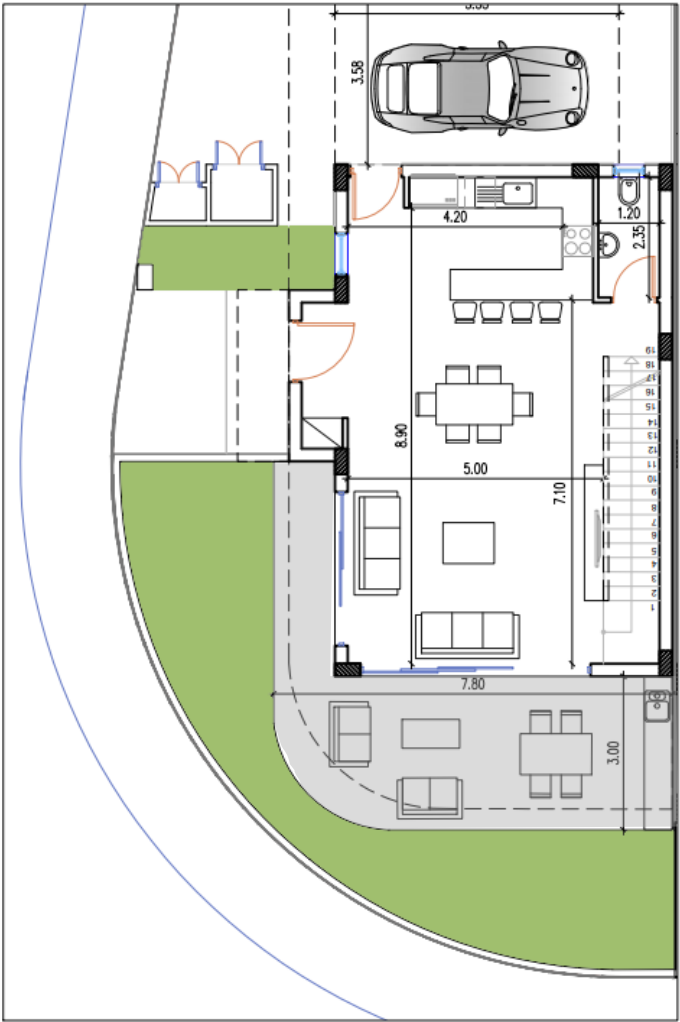


First floor

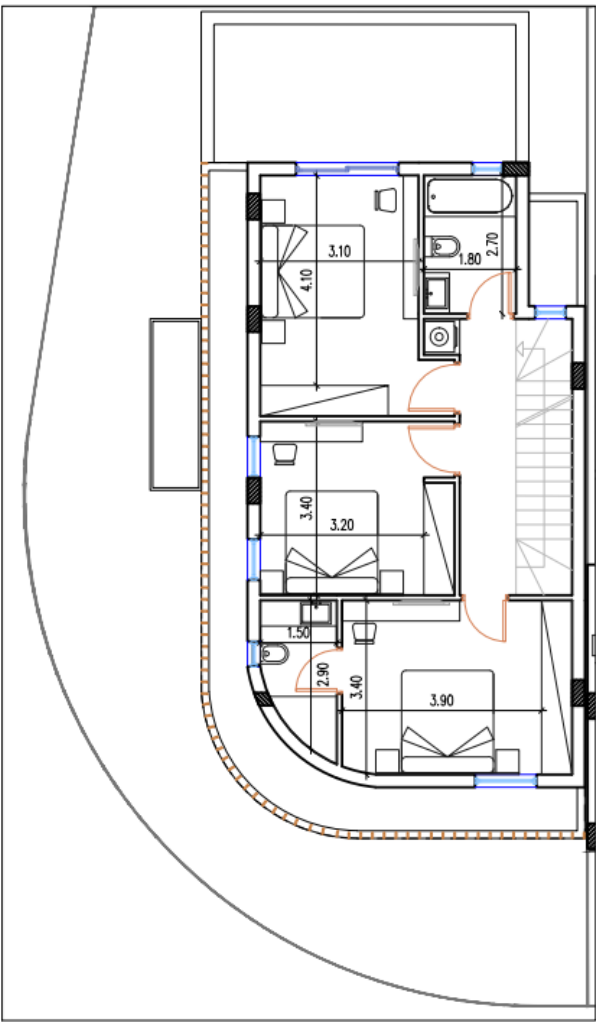


Roof garden

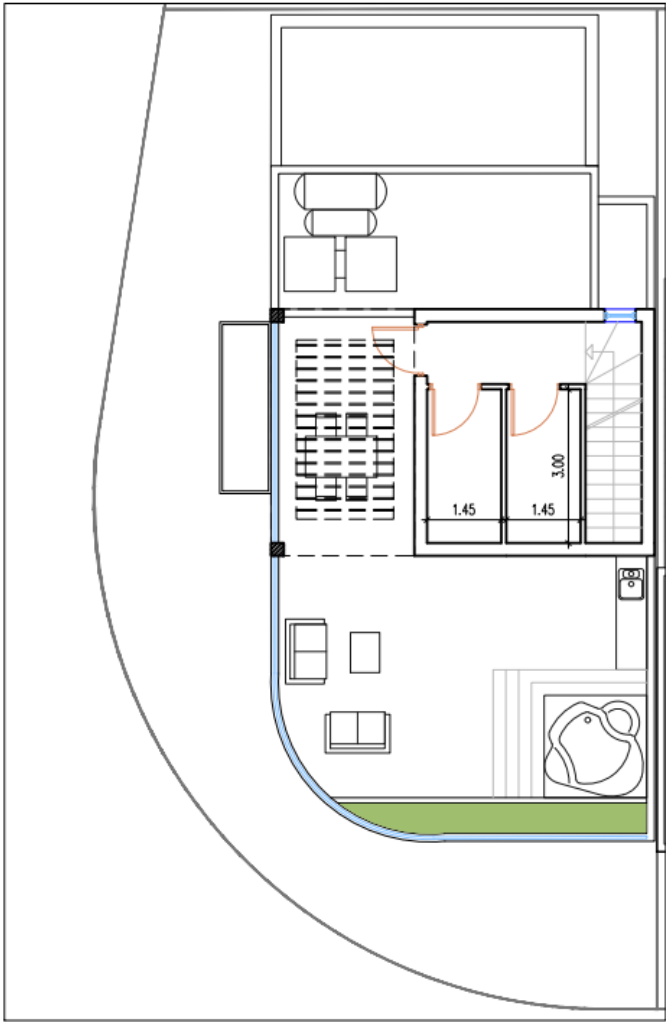
FLOORPLANS – V5



Ground floor



First floor

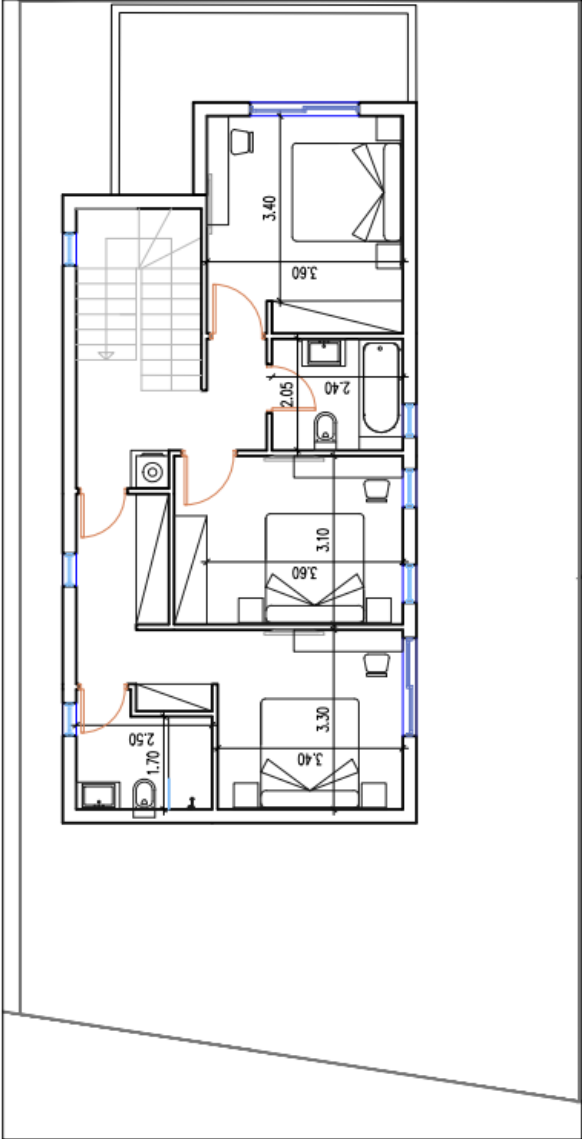


Roof garden

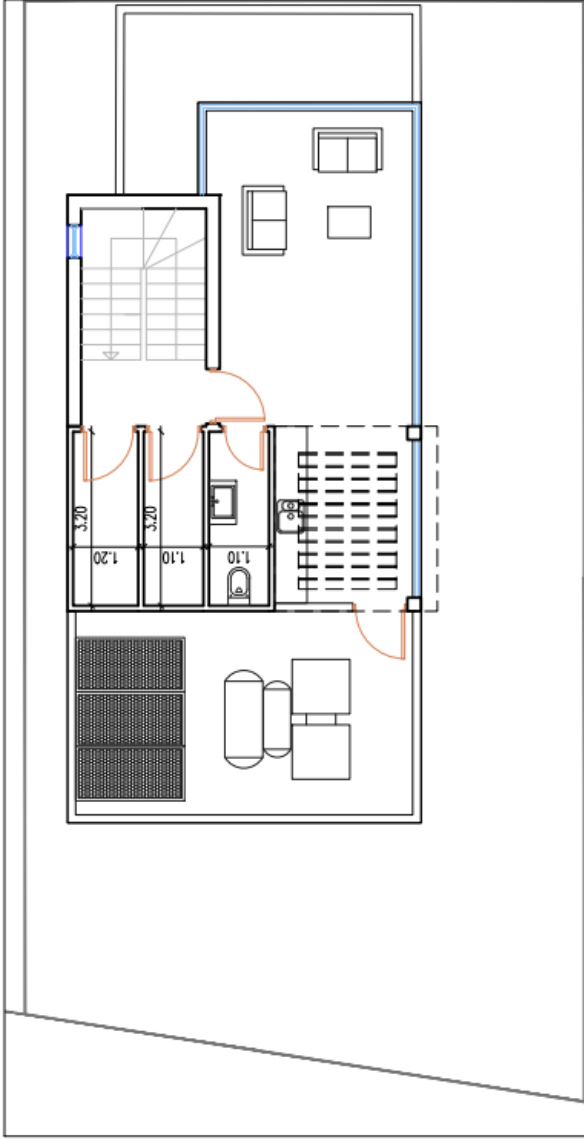
FLOORPLANS – V6



Ground floor

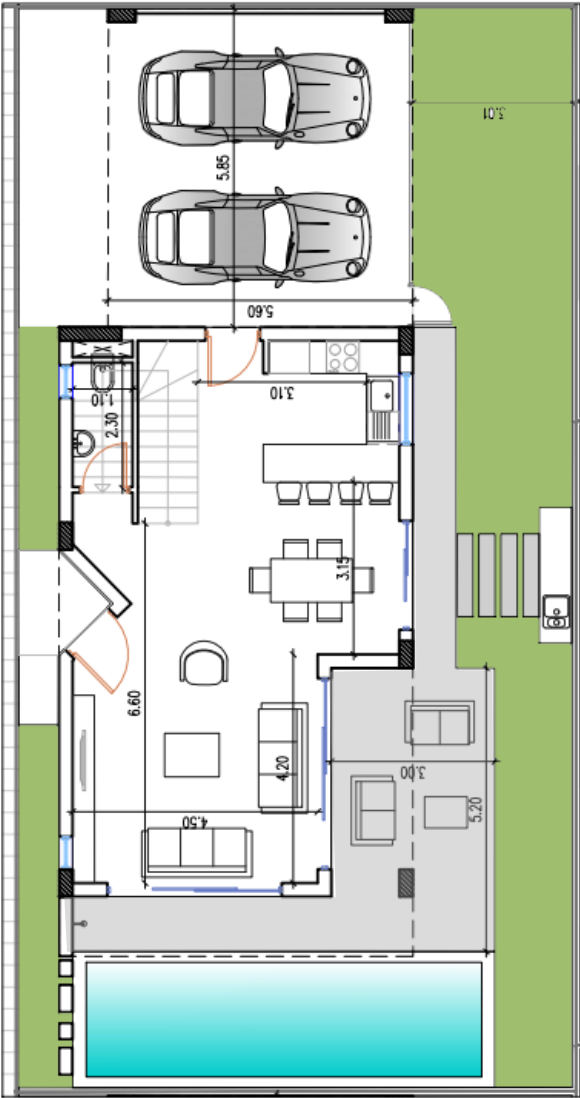


First floor

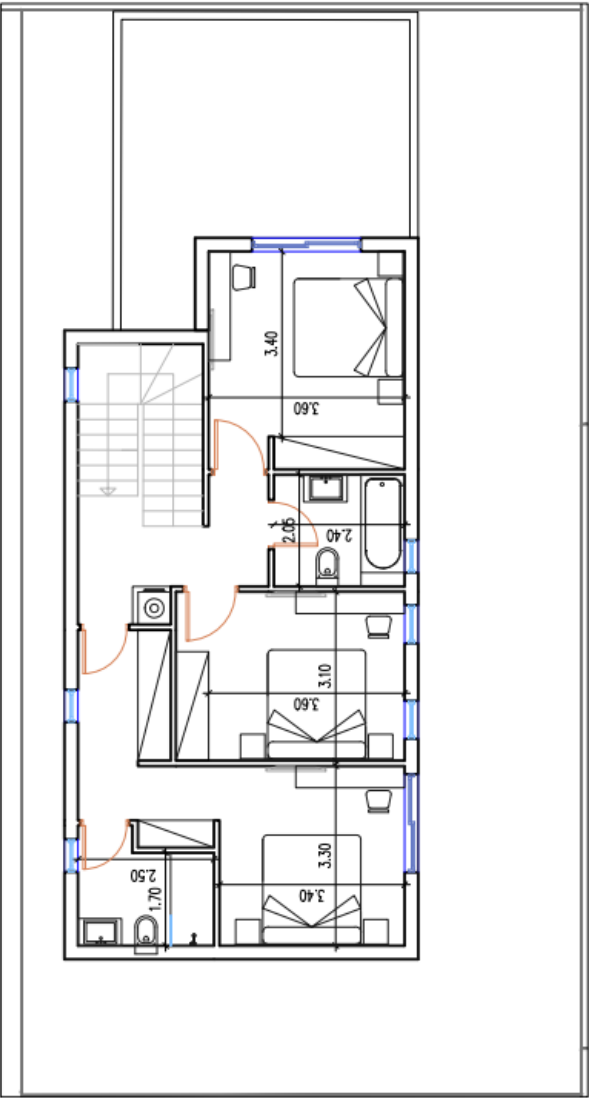


Roof garden

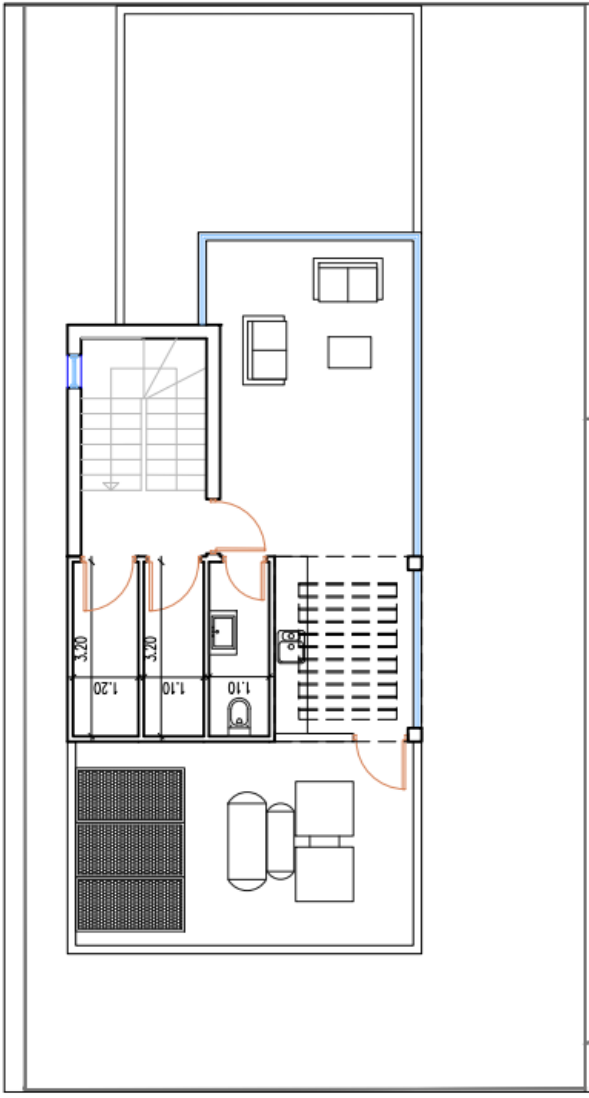
FLOORPLANS – V7



Ground floor

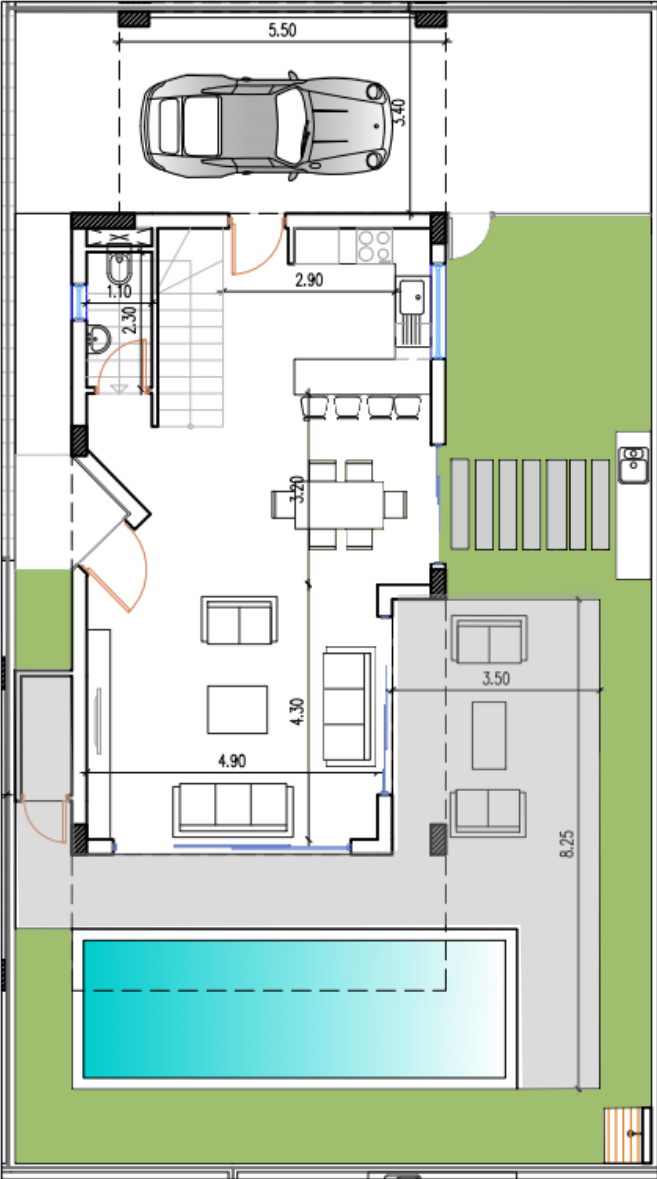


First floor

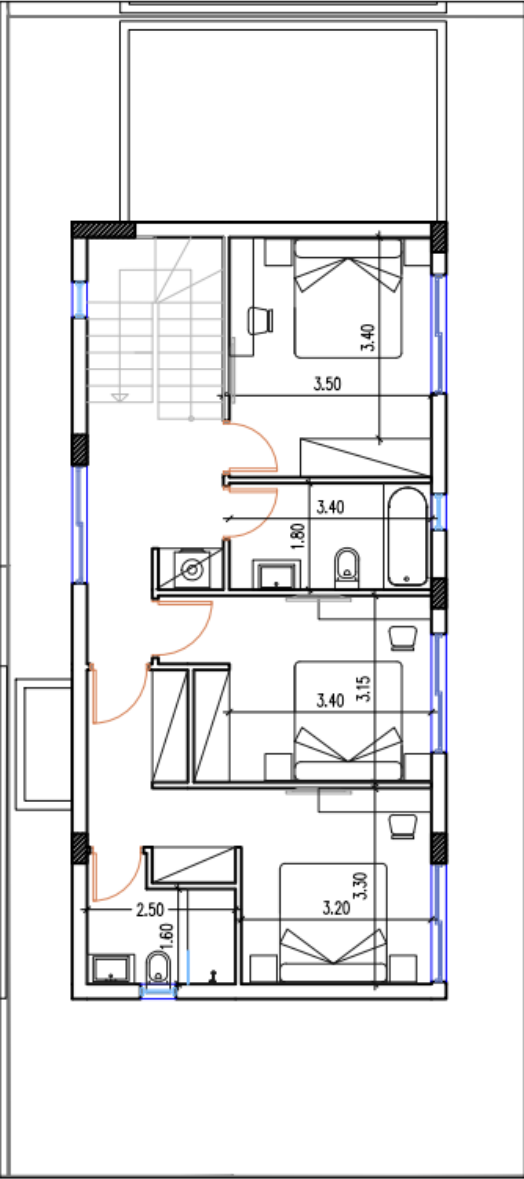


Roof garden

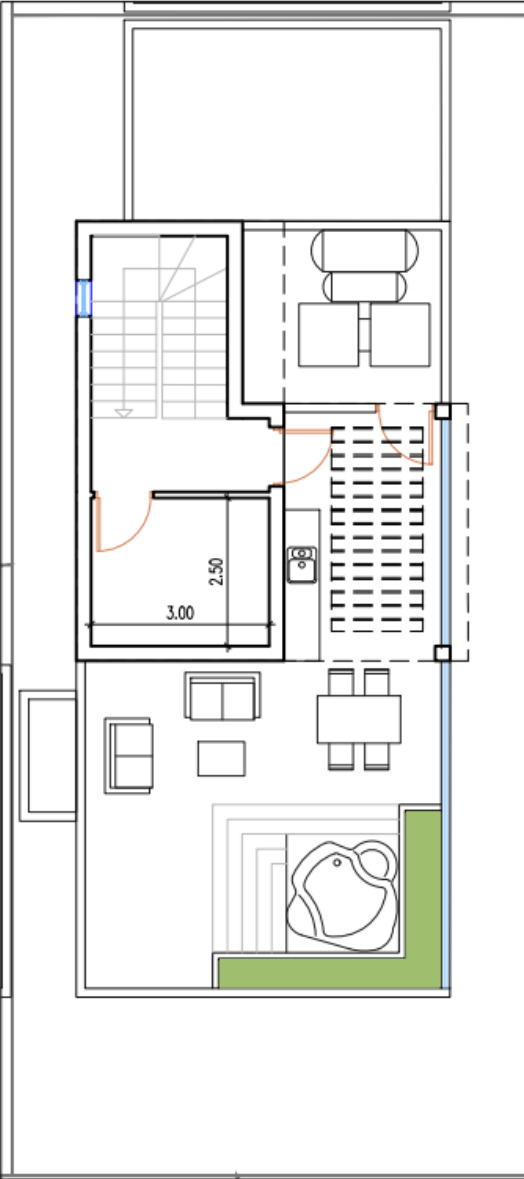
FLOORPLANS – V8 and V9



Ground floor

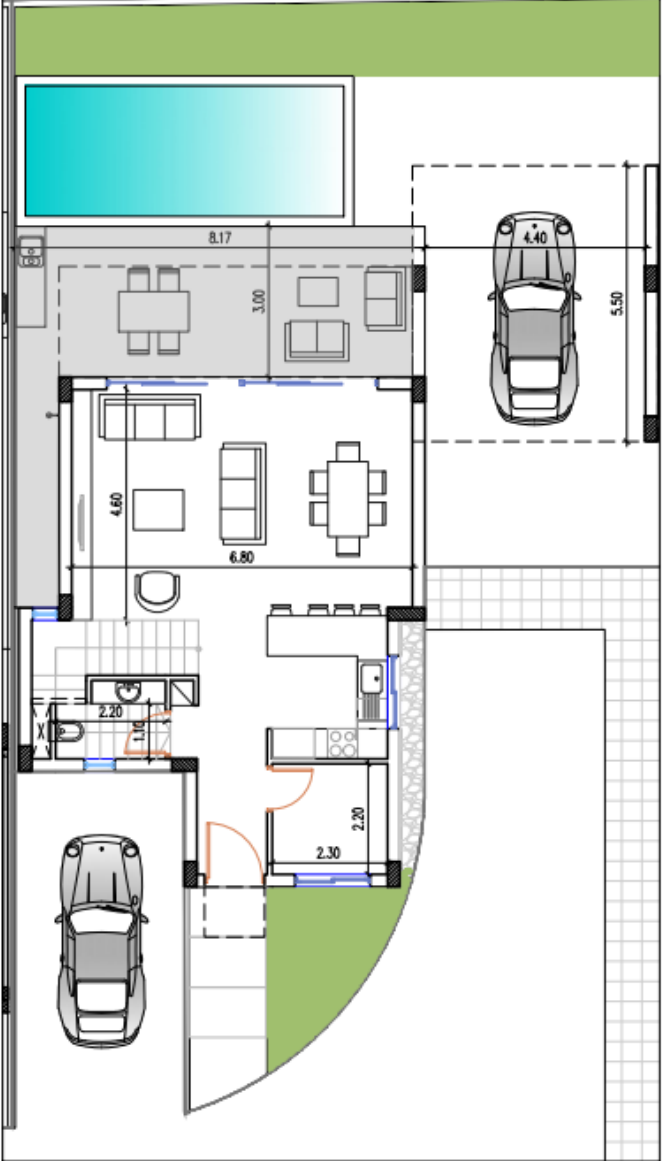


First floor

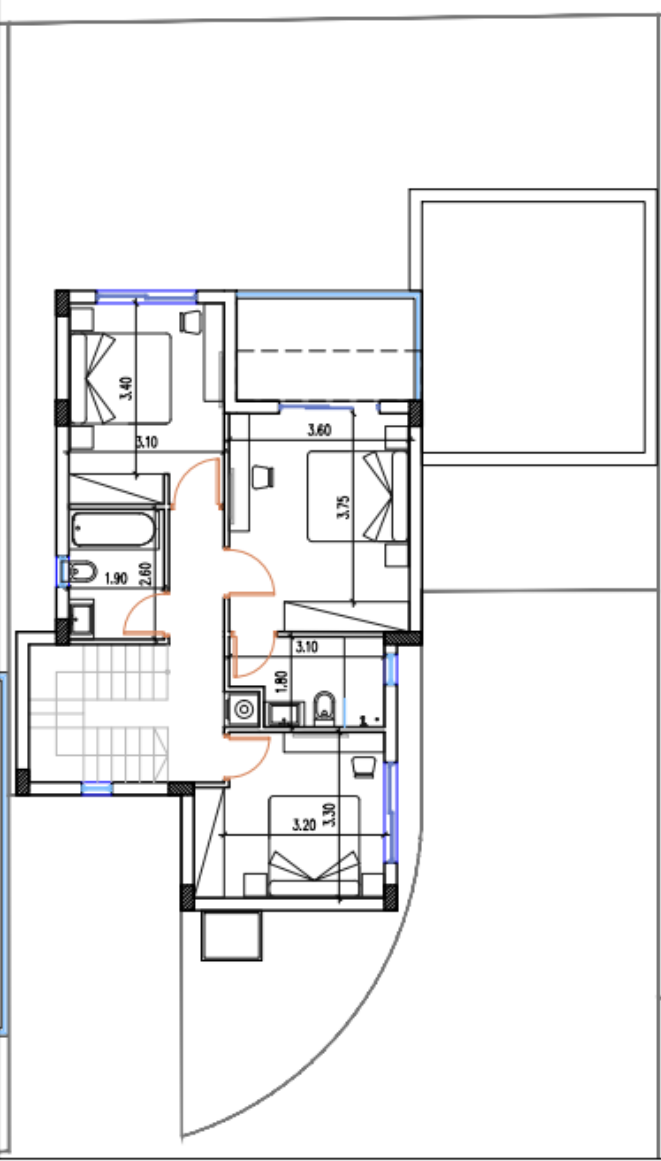


Roof garden

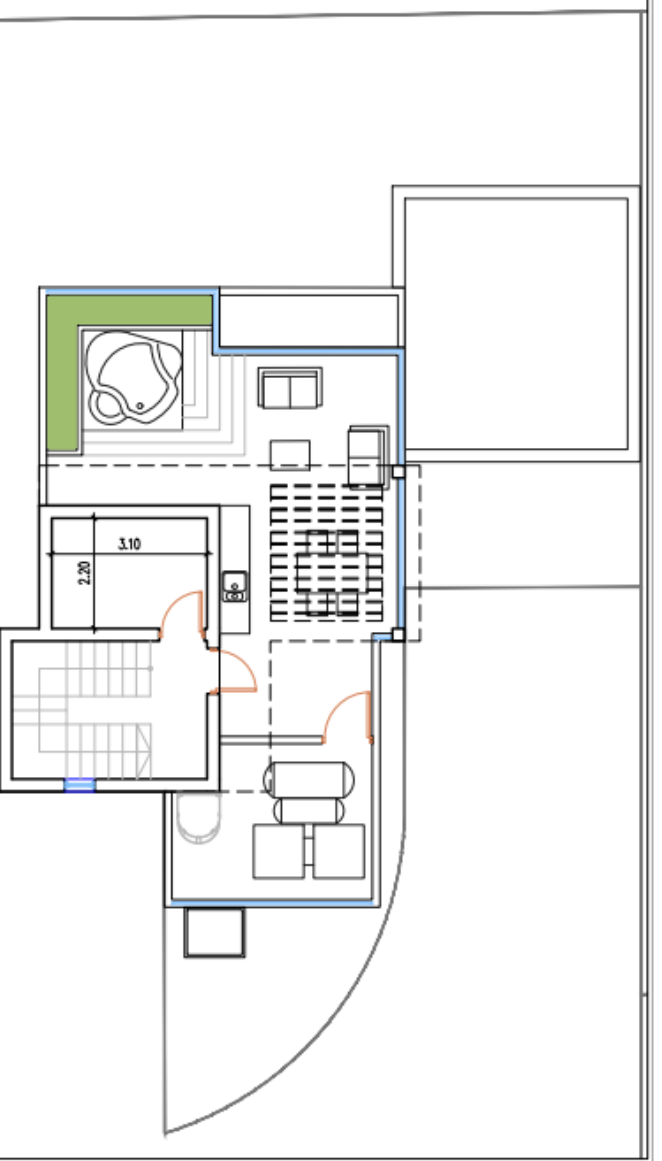
FLOORPLANS – V10



Ground floor

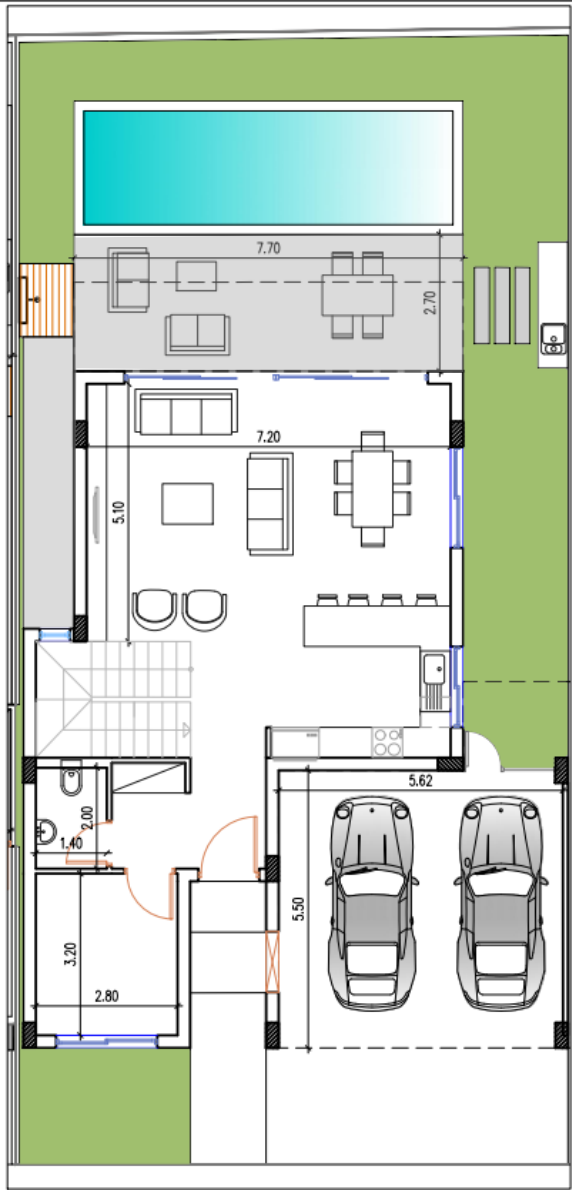


First floor

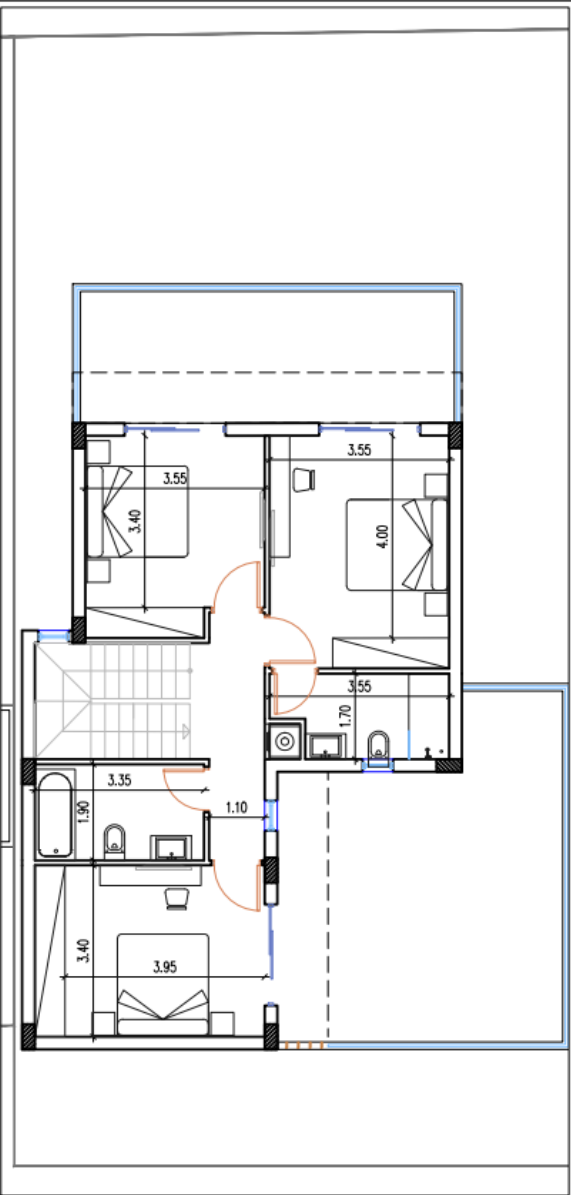


Roof garden

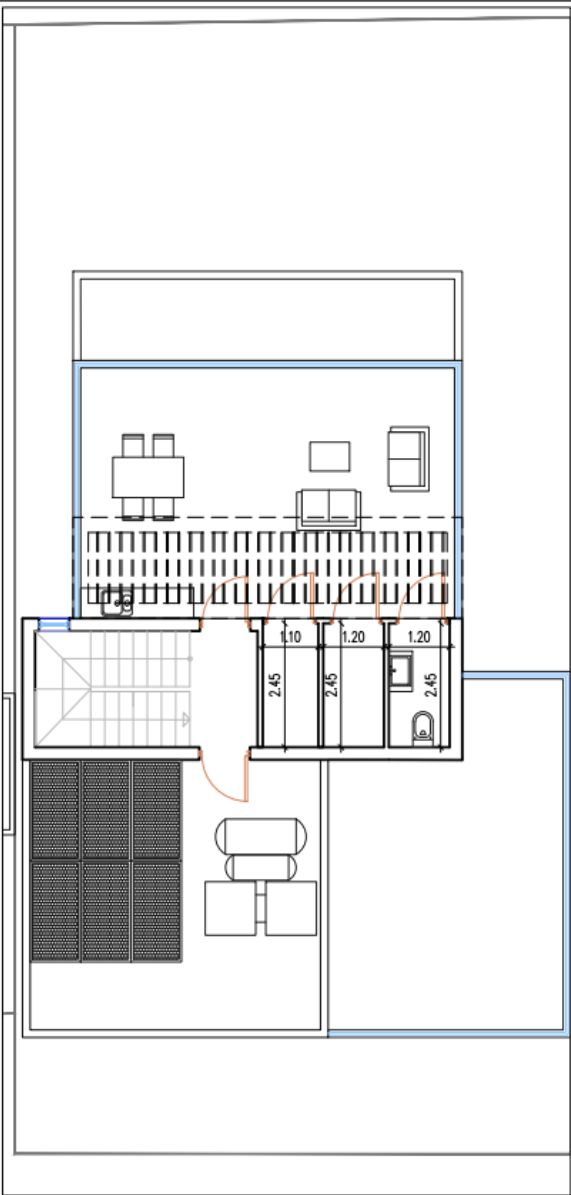
FLOORPLANS – V11



Ground floor



First floor

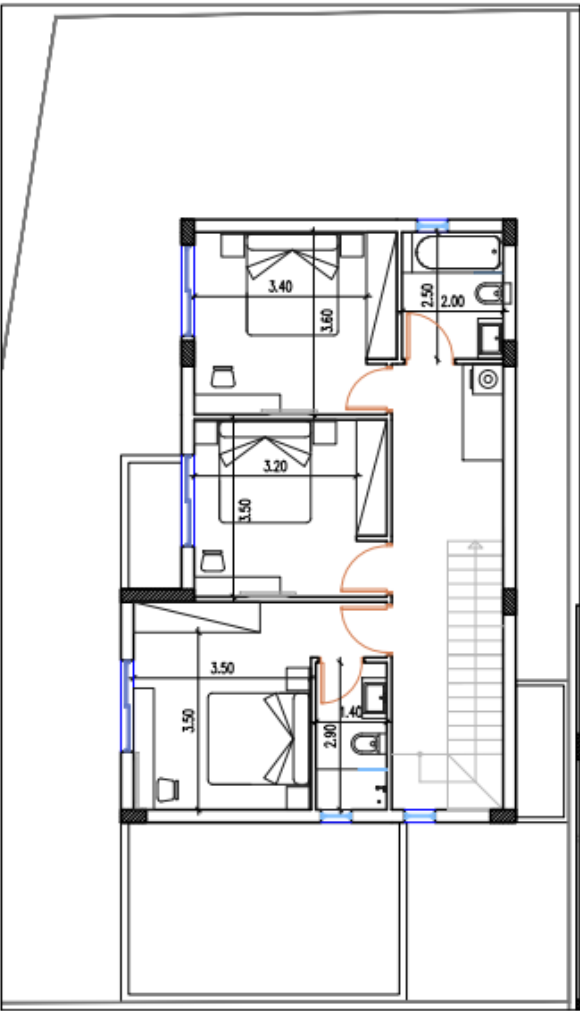


Roof garden

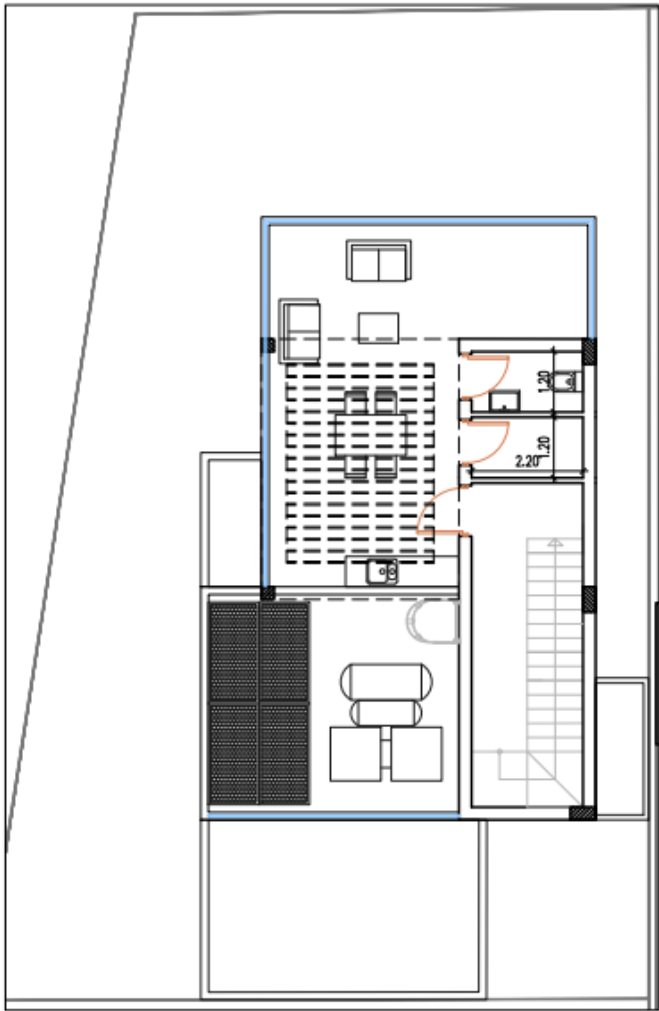
FLOORPLANS – V12



Ground floor



First floor



Roof garden

THANK YOU



interliving

interlivinggroup.com